

Glucose-lactate metabolic cooperation in cancer: insights from a spatial mathematical model and implications for targeted therapy

Jessica B. McGillen^{a,*}, Catherine J. Kelly^b, Alicia Martínez-González^c,
Natasha K. Martin^d, Eamonn A. Gaffney^a, Philip K. Maini^a, Víctor M.
Pérez-García^c

^a*Mathematical Institute, University of Oxford, Andrew Wiles Building, Radcliffe
Observatory Quarter, Woodstock Road, Oxford, OX2 6GG, United Kingdom*

^b*Department of Oncology, University of Oxford, Old Road Campus Research Building,
Roosevelt Drive, Oxford, OX3 7DQ, United Kingdom*

^c*Instituto de Matemática Aplicada a la Ciencia y la Ingeniería, Universidad de Castilla-La
Mancha, Avda. Camilo José Cela, 13071 Ciudad Real, Spain*

^d*School of Social and Community Medicine, Bristol University, Canynge Hall, 39 Whatley
Road, Bristol, BS8 2PS, United Kingdom*

Abstract

A recent hypothesis has proposed a glucose-lactate metabolic symbiosis between adjacent hypoxic and oxygenated regions of a developing tumour, and proposed a treatment strategy to target this symbiosis. However, *in vivo* experimental support remains inconclusive. Here we develop a minimal spatial mathematical model of glucose-lactate metabolism to examine, in principle, whether metabolic symbiosis is plausible in human tumours, and to assess the potential impact of inhibiting it. We find that symbiosis is a robust feature of our model system—although on the length scale at which oxygen supply is diffusion-limited, its occurrence requires very high cellular metabolic activity—and that necrosis in the tumour core is reduced in the presence of symbiosis. Upon simulating therapeutic inhibition of lactate uptake, we predict that targeted treatment increases the extent of tissue oxygenation without increasing core necrosis. The oxygenation effect is correlated strongly with the extent of wildtype hypoxia and only weakly with wildtype symbiotic behaviour, and therefore may be promising for radiosensitisation of hypoxic, lactate-consuming tumours even if they do not exhibit a spatially well-defined symbiosis. Finally, we conduct a set of *in vitro* experiments on the U87 glioblastoma cell line to facilitate preliminary speculation as to where highly malignant tumours might fall in our parameter space, and find that these experiments suggest a weakly symbiotic regime for U87 cells, which raises the new question of what relationship exists between symbiosis—if indeed it occurs *in vivo*—and tumour malignancy.

*Corresponding author

Email addresses: jessica.mcgillen@maths.ox.ac.uk (Jessica B. McGillen)

Key words: cancer metabolism, partial differential equations, multidimensional sensitivity analysis

1. Introduction

Recent years have seen a refinement of the historical view of tumours as greedy consumers of glucose. Experiments by Cheeti et al. (2006), Pavlides et al. (2009, 2010), and Sonveaux et al. (2008) indicate that tumour cells can consume lactate oxidatively as a metabolic substrate, either as a replacement fuel for glucose or concurrently with it. This lactate consumption has been shown to occur via oxidative phosphorylation (OXPHOS) and to depend upon uptake through the monocarboxylate transporter MCT1 (Sonveaux et al. 2008). On the basis of these discoveries, Sonveaux et al. (2008) put forward the hypothesis that "...lactate, the end-product of glycolysis, is the keystone of an exquisite symbiosis in which glycolytic and oxidative tumour cells mutually regulate their access to energy metabolites" in a spatially compartmentalised manner dependent upon oxygenation of the tumour tissue. Additionally, Sonveaux et al. (2008) proposed a novel treatment strategy, which centred on radio-sensitising a tumour by inhibiting MCT1 to force oxygenated cells to consume glucose and thereby starving nearby hypoxic, radiation-invulnerable, cells. Figure 1 provides a graphical interpretation of these ideas.

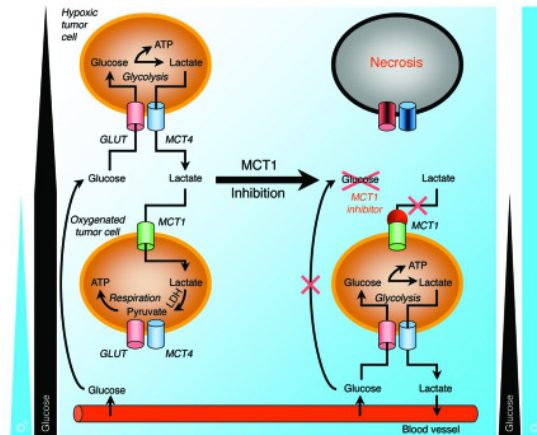


Figure 1: **Metabolic symbiosis as hypothesised by Sonveaux et al. (2008).** In a wildtype tumour (left panel), cells in the oxygenated environment near a capillary take up lactate for consumption by oxidative phosphorylation, gated by monocarboxylate transporter 1 (MCT1), while cells in the hypoxic environment of the tumour interior take up glucose for consumption by (anaerobic) glycolysis, gated by glucose transporters (GLUT) and producing lactate, which is then extruded by monocarboxylate transporter 4 (MCT4). This cooperation is thought to preserve glucose for the tumour interior. Sonveaux et al. postulated that inhibiting MCT1 (right panel) would force cells near the capillary to consume glucose instead of lactate, starving interior cells and increasing oxygenation into the tumour. Image reproduced with permission from the *Journal of Clinical Investigation*.

Sonveaux et al. (2008) presented elegant *in vitro* evidence for dual glucose-lactate metabolism gated by MCT1 in oxidative SiHa versus glycolytic WiDr
20 tumour cells. Qualitative *in vivo* experiments on mouse LLc and human WiDr tumours further suggested that symbiosis was a robust tumour feature, and both the necrotic area and tissue oxygenation were shown to be extended by chronic MCT1 inhibition *in vivo*. However, a subsequent set of independent
25 *in vivo* experiments carried out by Busk et al. (2011) on SiHa and FaDu_{dd} tumours saw no impact by MCT1 inhibition on either necrosis or the tissue glucose concentration, and only a transient decrease in the correlation between hypoxia and glucose uptake. Controversy has thus arisen as to whether the symbiosis hypothesis is an important feature of tumours and, especially, whether MCT1 inhibition of this symbiosis can cause the desired detrimental effects.
30 The symbiosis hypothesis can be framed as a mathematical reaction-diffusion problem—how do the nutrients of interest flow in tumour tissue, and what spatial features develop as a consequence of consumption of these nutrients across the tumour domain?—and hence there is scope for mathematics to help resolve some of this controversy. By translating the dual glucose-lactate metabolic sys-
35 tem into a mathematical model, with underlying assumptions made explicit, it may be possible to shed light on whether *in vivo* symbiosis as proposed by Sonveaux et al. (2008) is plausible in principle, and which of the two sets of experimental results is more likely to represent clinical reality.

Mendoza-Juez et al. (2012) developed a preliminary mathematical descrip-
40 tion of dual glucose-lactate tumour metabolism *in vitro*. This model was non-spatial and captured the metabolic behaviour of two fractional populations of tumour cells, one oxidative and the other glycolytic, in the presence of glucose and lactate. In brief, Mendoza-Juez et al. (2012) validated their model against
45 five human cancer cell lines with varying characteristic metabolic rates and successfully replicated behaviours observed *in vitro* by Elstrom et al. (2004), Sonveaux et al. (2008), and Voisin et al. (2010). Their study thus supports the idea that tumour cells can consume lactate and that this capability, conferred by MCT1 expression, varies among cell lines in an *in vitro* environment. However, it leaves unanswered the question of whether, in principle, metabolic symbiosis
50 is plausible *in vivo*.

The symbiosis hypothesis is intrinsically related to spatial tumour features, as the metabolism of each cell is responsive to hypoxia cues in the local microenvironment and hence based, at least in part, on relative distance from the capillary bed. Consequently, to fully capture the symbiosis hypothesis, a spatial
55 model is needed. In this paper we develop a minimal spatial model of glucose-lactate metabolism and use it to interrogate both the plausibility of metabolic symbiosis *in vivo* and the potential effectiveness of blocking this symbiosis as a radiosensitisation strategy. We find that symbiosis is a robust feature of our model system, and, although it does not directly rescue tumours from necrosis,
60 on average its effects on the tumour dynamics are in line with expectations. However, symbiosis does require the cells' metabolic activity to be several orders of magnitude higher than what is commonly observed *in vitro*. Whether such levels are plausible remains an open question. Furthermore, we simulate

MCT1 inhibition and discover that, in agreement with Busk et al. (2011), this
65 blocking of symbiosis does not cause the expected increase in necrosis; but, in
agreement with Sonveaux et al. (2008), it does cause an increase in tissue oxy-
genation. This oxygenation is highly correlated in our model with the extent
of hypoxia exhibited by the wildtype system, suggesting that MCT1 inhibition
may be a promising strategy for radiosensitising lactate-consuming tumours
70 with or without symbiosis. Finally, we demonstrate experimentally that U87
glioblastoma tumours are likely to fall in a parameter regime that produces only
weakly symbiotic behaviour, raising an open question of how symbiosis relates
to malignancy in general.

2. Our model

75 Throughout this study, we will aim for a model of minimal complexity, con-
jecturing that if metabolic symbiosis is not possible in a simplified scenario
where glucose and lactate dominate the metabolic landscape, then it is unlikely
to be a significant feature in more complicated scenarios. We do consider it
vital for our model to be spatial, however, as the metabolic symbiosis hypoth-
80 esis *in vivo* is a spatial feature; hence, a minimal system of partial differential
equations provides the requisite level of complexity.

2.1. Motivation and framework

The model we develop here is a direct extension, with simplifications, of the
model proposed by Mendoza-Juez et al. (2012) to a spatial tumour scenario. As
85 such, it captures behaviours that are qualitatively similar to those with which
the non-spatial model was verified, namely patterns of dual consumption of
glucose and lactate that vary across tumour cell lines depending on the rela-
tive expression of membrane transporters. However, we simplify the modelling
framework considerably by avoiding the assumption of metabolic switching, and
90 instead suppose that cells can use both glycolysis and oxidative phosphoryla-
tion given their relative expression of the requisite membrane transporters and
the appropriate environment conditions (e.g. oxidative phosphorylation (OX-
PHOS) requires oxygen). This change allows us to avoid imposing an artifi-
cial dichotomy between the metabolic pathways. We depart further from the
95 Mendoza-Juez et al. (2012) model by neglecting consumption of glucose by ox-
idative phosphorylation, which experiments have shown to be a minor factor
relative to glycolysis in proliferative cells (Pfeiffer et al. 2001, Vander Heiden
et al. 2009, Koppenol et al. 2011). An alternative model that does consider OX-
PHOS of glucose can be found in the Supplemental Information and exhibits
100 dynamics which are qualitatively similar to those presented here.

We model a one-dimensional ray in polar coordinates extending out from the
core of a tumour, under the assumption of spherical symmetry, to a spherical
shell of capillaries 0.02 cm from the core. This modelling scenario corresponds
either to a small avascular tumour or, more interestingly (and more realistically
105 biologically), to pockets of tissue inside a larger vascularised tumour. Large

tumours exhibit heterogeneities in oxygen supply due to capillary crushing and leakiness of tumour-induced vascular networks (Gatenby et al. 2007, Gillies & Gatenby 2007, Basanta et al. 2011), and hence our model can be viewed as a simplified representation of localised metabolic features in a heterogeneous tumour.

110

2.2. Equations and terms

The species in our model are dependent upon time, t , in days, and one-dimensional spatial coordinate, r , in centimetres from the tumour core, or interior of the local tumour pocket. These species are cell density, $C(r, t)$, normalised by the tissue carrying capacity; the tissue concentration of glucose, $G(r, t)$, in mM; the tissue concentration of lactate, $L(r, t)$, in mM; and the partial pressure of oxygen, $O(r, t)$, in mM. We model only tumour tissue as inclusion of the underlying stroma could introduce tumour-healthy metabolic interactions (Pavlidis et al. 2009, 2010), and we wish to keep the modelling scenario restricted to a simple in-principle test of the symbiosis hypothesis as it was stated by Sonveaux et al. (2008).

120

We let ρ represent the rate of tumour cell growth; δ the rate of tumour cell necrosis; and κ_G and κ_L the maximal rates of consumption of glucose and lactate, respectively, by the tumour population. Additionally defining switch functions capturing tumour sensitivity to hypoxia, glucose deprivation, severe acidosis, and severe anoxia as ψ_H , ψ_G , ψ_A , and ψ_N , respectively, our model equations are

$$C_t = \overbrace{\frac{\Delta_C}{r^2} [r^2 C_r]_r}^{\text{cellular diffusion}} + \overbrace{\rho C \left(1 - \frac{C}{C_*}\right)}^{\text{logistic growth}} - \overbrace{\delta (\psi_G + \psi_A + \psi_N) C}^{\text{necrosis by starvation, acidosis, or anoxia}}, \quad (1)$$

$$G_t = \overbrace{\frac{\Delta_G}{r^2} [r^2 G_r]_r}^{\text{diffusion}} - \overbrace{\kappa_G \frac{\alpha_G G}{\alpha_G G + \alpha_L L + \eta_G} C}^{\text{consumption by glycolysis}}, \quad (2)$$

$$L_t = \overbrace{\frac{\Delta_L}{r^2} [r^2 L_r]_r}^{\text{diffusion}} + \overbrace{2\kappa_G \frac{\alpha_G G}{\alpha_G G + \alpha_L L + \eta_G} C}^{\text{production by glycolysis}} - \overbrace{\kappa_L \frac{\alpha_L L}{\alpha_G G + \alpha_L L + \eta_L} \psi_H C}^{\text{consumption by OXPHOS}}, \quad (3)$$

$$O_t = \overbrace{\frac{\Delta_O}{r^2} [r^2 O_r]_r}^{\text{diffusion}} - \overbrace{3\kappa_L \frac{\alpha_L L}{\alpha_G G + \alpha_L L + \eta_L} \psi_H C}^{\text{consumption by OXPHOS}}, \quad (4)$$

where Δ_C , Δ_G , Δ_L , and Δ_O denote the diffusion coefficients of tumour cells, glucose, lactate, and oxygen, respectively. We assume a Michaelis-Menten form for the metabolite uptake functions such that η_G and η_L represent the half-saturation points for uptake of glucose and lactate, respectively.

125

Although expression of metabolite transporters is tied to the microenvironment *in vivo*, with GLUT expression being hypoxia-induced (Burgman et al. 2001, Airley et al. 2001, Williams et al. 2002, Wincewicz et al. 2007, Liu et al.

2009) and MCT1 expression being hypoxia-repressed (Berra et al. 2003, Marxsen
 130 et al. 2004, Sonveaux et al. 2008, Feron 2009, Semenza 2010), different cell lines
 exhibit different characteristic levels of expression *in vitro* (Elstrom et al. 2004,
 Sonveaux et al. 2008, Voisin et al. 2010) and it is possible that cells retain
 these features *in vivo* in the form of characteristic maximal levels of expression.
 The parameters α_G and α_L in Equations (2)-(4) allow for this possibility: if
 135 the cells' characteristic capacity for MCT1 expression is high relative to that
 for GLUT, then we will have $\alpha_L > \alpha_G$; conversely, if the characteristic capac-
 ity for MCT1 expression is low relative to that for GLUT, then we will have
 $\alpha_L < \alpha_G$. If $\alpha_G = \alpha_L$ then the cells have no characteristic capacities *in vivo* and
 instead transporter expression is determined entirely by the microenvironment.
 140 We note that Equations (2)-(4) preserve the appropriate stoichiometry of the
 metabolic pathways; that is, two molecules of lactate are produced per molecule
 of glucose consumed by the glycolytic pathway and three molecules of oxygen
 are consumed per molecule of lactate processed by OXPHOS.

Tumour cells may become necrotic under severely glucose-starved, acidic, or
 anoxic conditions. We model this in Equation (1) as a sum of simple sensitivity
 switches— ψ_G for glucose starvation, ψ_A for acidosis, and ψ_N for anoxia—such
 that the speed of cell death increases as conditions become harsher. Addi-
 tionally, OXPHOS is sensitive to hypoxia, which we represent as an oxygen-
 dependent switch, ψ_H , multiplying the uptake of lactate in Equations (3) and
 (4). These four sensitivity switches are

$$\psi_G = \begin{cases} 0 & \text{if } G > \sigma_G, \\ 1 & \text{otherwise;} \end{cases} \quad (5)$$

$$\psi_A = \begin{cases} 1 & \text{if } L > \sigma_A, \\ 0 & \text{otherwise;} \end{cases} \text{ and} \quad (6)$$

$$\psi_N = \begin{cases} 0 & \text{if } O > \sigma_N, \\ 1 & \text{otherwise;} \end{cases} \quad (7)$$

$$\psi_H = \begin{cases} 1 & \text{if } O > \sigma_H, \\ 0 & \text{otherwise;} \end{cases} \quad (8)$$

where σ_G denotes the minimum glucose concentration that cells require for
 145 survival, σ_A the lactate concentration corresponding to the maximum tolerable
 level of tissue acidity, σ_N the oxygen threshold for severe anoxia, and σ_H the
 oxygen threshold for hypoxia. We note that σ_G and σ_A are difficult to measure
 experimentally, and hence these constants are somewhat abstract. Nevertheless,
 we will make the reasonable choices of setting σ_G to be small and σ_A to be above
 150 the lactate level typically observed in tumour tissue (Herholz et al. 1992).

In keeping with Mendoza-Juez et al. (2012), we make the slight simplification
 of scaling the tumour cell density by the tissue carrying capacity, such that
 $\tilde{C} = C/C_*$. Further letting $a = \alpha_L/\alpha_G$, $n_G = \eta_G/\alpha_G$, $n_L = \eta_L/\alpha_L$, $k_G = \kappa_G C_*$,

and $k_L = \kappa_L C_*$, and dropping the tilde for convenience, we have

$$C_t = \frac{\Delta_C}{r^2} [r^2 C_r]_r + \rho C(1 - C) - \delta(\psi_G + \psi_A + \psi_N) C, \quad (9)$$

$$G_t = \frac{\Delta_G}{r^2} [r^2 G_r]_r - k_G \frac{G}{G + a_L L + n_G} C, \quad (10)$$

$$L_t = \frac{\Delta_L}{r^2} [r^2 L_r]_r + 2k_G \frac{G}{G + a_L L + n_G} C - k_L \frac{L}{G/a + L + n_L} \psi_H C, \quad (11)$$

$$O_t = \frac{\Delta_O}{r^2} [r^2 O_r]_r - 3k_L \frac{L}{G/a + L + n_L} \psi_H C. \quad (12)$$

Lastly, for later notational convenience we define the uptake functions

$$\phi_G = \frac{G}{G + a_L L + n_G}, \quad (13)$$

$$\phi_L = \frac{L}{G/a + L + n_L}. \quad (14)$$

Boundary conditions are zero-flux for all species in the tumour core, under our assumption of spherical symmetry, and we retain this zero-flux condition for the tumour population at the edge of the tumour (at $r = R$ where R is the radius of a typical avascular tumour, taken here to be 0.02 cm), such that the cells cannot migrate beyond the capillary shell. Metabolites are permitted to exchange with the capillary shell as follows (for a generic metabolite, M):

$$\frac{\partial M}{\partial r} \Big|_{r=R} = J_M (M_v - M), \quad (15)$$

where J_M is the coefficient of exchange and M_v the concentration of the metabolite in the vessels. The vessels act as a source for glucose and oxygen and, commonly, as a sink for lactate. In exceptional cases of chronic hyperlactatemia (Huckabee 1961, Levraut et al. 1998, Boubaker et al. 2001) or insulin-induced hypoglycemia (Boumezbeur et al. 2010), the capillary shell may act instead as a source for lactate, but we do not consider this relatively rare phenomenon here. The vessel concentrations of glucose, lactate, and oxygen (G_v , L_v , and O_v , respectively) and corresponding exchange coefficients (J_G , J_L , and J_O) can be found in Table 1.

We impose initial conditions such that the tumour cells have a uniform density of half the carrying capacity across the domain, and metabolite concentrations take a uniform value equal to their vessel concentrations. The steady-state results of our system are qualitatively insensitive to our choice of initial conditions, and we have chosen this particular configuration to facilitate a clear interpretation of any necrosis in the tumour core that we may see relative to the edge.

2.3. Metrics for model exploration

‘Symbiosis’ as proposed by Sonveaux et al. (2008) is a qualitative and imprecisely defined feature of the tumour system. Nevertheless, we can consider it by

determining the fraction of total metabolic consumption occupied by glycolysis, denoted Φ_g , and the fraction occupied by oxidative phosphorylation of lactate, denoted Φ_l ; these are given by:

$$\Phi_g = \frac{k_G \phi_G}{k_G \phi_G + k_L \phi_L \psi_H}, \quad (16)$$

$$\Phi_l = \frac{k_L \phi_L \psi_H}{k_G \phi_G + k_L \phi_L \psi_H}. \quad (17)$$

We consider symbiosis to occur when glycolysis dominates over oxidative phosphorylation of lactate (OXPHOS) in the hypoxic core, and OXPHOS dominates over glycolysis in the oxygenated region near the tumour edge. Further, we can consider the ‘strength’ of symbiosis to be given by the degree of dominance OXPHOS takes over glycolysis in the oxidative region. We are also interested in the occurrence of necrosis, or a reduction in tumour density in the core relative to the edge, and the extent of hypoxia, or the location along the tumour domain where oxygen crosses the hypoxia threshold, σ_H . Accordingly, letting θ denote symbiosis, γ denote necrosis, and λ denote the extent of hypoxia, we define the metrics

$$\theta = \begin{cases} \max\{\Phi_l(\text{edge}) - \Phi_g(\text{edge})\} & \text{if } \Phi_g(\text{core}) > \Phi_l(\text{core}) \text{ and} \\ & \Phi_l(\text{edge}) > \Phi_g(\text{edge}); \\ 0 & \text{otherwise;} \end{cases} \quad (18)$$

$$\gamma = C(\text{edge}) - C(\text{core}); \quad (19)$$

$$\lambda = r(O = \sigma_H); \quad (20)$$

with λ subject to the limiting cases that $\lambda = 0$ if the whole tissue is normoxic and $\lambda = R$ if the whole tissue is hypoxic.

170 3. Computational and experimental methods

3.1. Numerical solutions

Throughout this chapter, Equations (9)-(12) are solved numerically using the Method of Lines (Schiesser & Griffiths 2009). By this method, we discretise space using a very fine step ($dr = 10^{-4}$ cm) and solve the resulting system of coupled ordinary differential equations through time using Matlab’s inbuilt ODE15s solver to accommodate stiffness.

Numerically simulating Equations (9)-(12) with a representative choice of parameters reveals that an end-time of 200 days is sufficient to achieve a steady state in which all species have reached a plateau (Figure 2).

180 For the remainder of this work, we will be concerned with spatial behaviours established at steady state. Hence, all simulations are run to an end-time of 200 days; parameters are listed in Table 1 and discussed further in Section 3.2.

In Figure 2 it appears that we have fast early-time dynamics, possibly due to the magnitude of the uptake rate parameters k_G and k_L . A full nondimensionalisation could help to elucidate the relative timescales driving the system, and

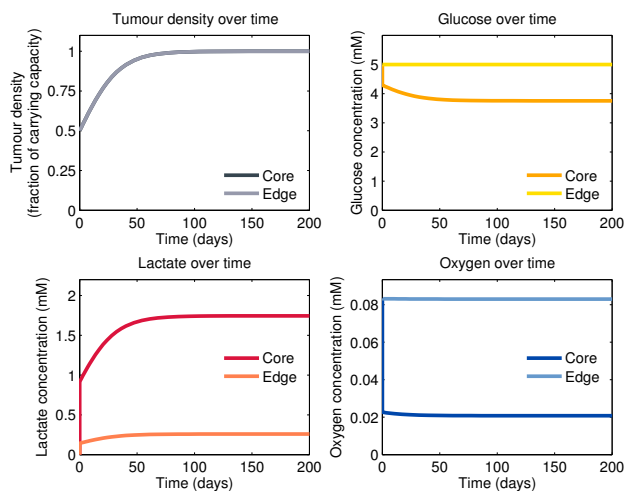


Figure 2: **Temporal behaviour of Equations (9)-(12).** Over-time profiles in the tumour core (darker colours) and at the tumour edge (lighter colours) for the tumour cell density (greys) and concentrations of glucose (oranges), lactate (reds), and oxygen (blues), for a representative choice of parameters: $a = 1$, $n_L = 1$, $n_G = 1$, $k_L = 10^4$, and $k_G = 10^3$, with the remaining parameters as listed in the top portion of Table 1. All profiles reach steady state well before the simulation end-time of 200 days.

an asymptotic analysis could potentially generate insight. However, we wish to explore the full range of possible parameter values for our model—including smaller choices for k_L and k_G —in order to allow scope for metabolic aberrations, such as mitochondrial dysregulation, which are observed in many tumours and which perturb the normal stoichiometry of ATP production (Seyfried & Shelton 2010). We therefore turn our attention to an exploration of some effective numerical methods by which to obtain a comprehensive picture of the fundamental parameter space of the model. Such methods can serve as a kind of proxy for analytical insight in differential equation settings and have an elegance and power of their own.

3.2. Multivariate sensitivity analysis

In any given model of a biological system, some of the fundamental model parameters may be well-determined, but others either cannot be measured accurately due to experimental limitations, or are of interest where variation is an important biological feature—for example, across different tumours. To explore the sensitivity of a system to its parameters that fall into the latter category, i.e. are of interest as having the potential to vary, it is possible to carry out a standard single-parameter or local sensitivity analysis in which one parameter is varied at a time while the others are held constant at ‘baseline’ or reference values (Marino et al. 2008). However, such an approach, while common, loses information about underlying uncertainties—for example in estimation of the

‘baseline’ values—and also about parameter interaction effects, and so would provide incomplete insight into the system (James & McCulloch 1990, Marino et al. 2008, Saltelli & Annoni 2010).

210 To escape the limitations of one-at-a-time sensitivity, we can simply allow the parameters of interest to vary simultaneously, and take random samples from the resulting multi-dimensional parameter space (Saltelli et al. 2008) for use in repeated numerical solutions of the model system. We can then examine the resulting distribution of model behaviours using histograms, scatterplots, and
215 further statistical methods as required. While more sophisticated approaches to global sensitivity analysis exist (Wu et al. 2013), for our system a sampling-based approach is sufficient to avoid the pitfalls of single-parameter sensitivity analyses while remaining computationally tractable.

The parameters in Equations (9)-(12) which we fix and consider ‘background’
220 parameters in order to set up a consistent “background” system against which to view the tumour metabolic dynamics, are listed with their sources in the top portion of Table 1. The remaining five parameters, which are the metabolic parameters and therefore of interest as potentially varying across tumours, are sampled from the ranges listed in the lower portion of Table 1, for repeated
225 numerical solutions of Equations (9)-(12) to steady state as described in Section 3.1.

Global, multidimensional sensitivity analyses have been gaining traction in systems biology (Marino et al. 2008) and nonlinear modelling (Homma & Saltelli 1996), particularly of ecology (De’ath & Fabricius 2000, Fieberg & Jenkins 2005,
230 Cutler et al. 2007, Cariboni et al. 2007) and infectious diseases (Wu et al. 2013). Yet, to our knowledge, we are the first to apply such approaches to tumour metabolism modelling. In the following we briefly discuss two complementary algorithms—one linear and one nonlinear—that exploit this multidimensional, sampling-based method for sensitivity analysis.

235 3.2.1. *Principal component analysis*

Principal component analysis (PCA) is a simple, non-parametric approach for extracting relevant information from large, complex datasets by reducing their dimensionality (Hastie et al. 2009). The PCA transformation is defined such that the first principal component captures as much variability in the
240 data as possible, and each subsequent component captures the largest possible amount of the remaining variability, subject to the constraint that the new component is uncorrelated with (i.e. orthogonal to) the preceding components.

If a dataset \mathbf{X} is arranged as an m -by- n matrix such that each of n observations comprises a column vector of m variables (here, parameters), then each
245 observation (here, a sampled point from our model parameter space) is a vector that lies in an m -dimensional vector space spanned by a basis. The goal of PCA is to find an alternative basis which is a linear combination of the original basis vectors and expresses the dataset more meaningfully. Note that PCA is a linear method; as such, it is stringent, because most complex systems are nonlinear,
250 but also powerful, because it renders the problem amenable to linear algebra.

Table 1: **Parameters in Equations (9)-(12)**. Model parameters (with dimensions, as we have only partially scaled the system): listed are value estimates for parameters that we consider fixed in order to set up a consistent background against which to view the dynamics of tumour glucose-lactate consumption (top portion), and ranges for our metabolic parameters that are of interest as varying in a meaningful way across tumours (bottom portion).

	Parameter	Value	Units	Source
Fixed	Δ_C	$5.7 \cdot 10^{-6}$	cm ² /day	Rockne et al. (2010)
	Δ_G	0.0346	cm ² /day	Jiang et al. (2005)
	Δ_L	0.0518	cm ² /day	$1.5\Delta_G$, due to size
	Δ_O	0.864	cm ² /day	Rockne et al. (2010)
	ρ	1/17	1/day	Rockne et al. (2010)
	δ	1/10	1/day	Estimated
	σ_H	0.0278	mM	Daşu et al. (2003), converted from mmHg using Henry's Law
	σ_G	0.1	mM	Chosen to be small
	σ_A	20	mM	Chosen to be large
	σ_N	0.001	mM	Chosen to be small
	J_G	10^3	1/cm	High as diffusion across vessel wall is facilitated (McEwen & Reagan 2004)
	J_O	10^3	1/cm	High as the capillary wall offers negligible resistance to oxygen diffusion (Blum 1960)
	J_L	10	1/cm	Assumed moderate for functioning vessels
	G_v	5	mM	Physiological (Sherwood 2007)
	L_v	0	mM	Physiological (Figley 2011)
	O_v	0.0834	mM	Physiological (Sherwood 2007), converted from mmHg using Henry's Law
Varied	k_G	$[1, 10^5]$	mM/day	Chosen to cover a large range
	k_L	$[1, 10^5]$	mM/day	Chosen to cover a large range
	n_L	$[0.01, 10]$	mM	Mendoza-Juez et al. (2012)
	n_G	$[0.01, 10]$	mM	Mendoza-Juez et al. (2012)
	a	$[10^{-3}, 10^3]$	none	Chosen to cover a large range

Letting \mathbf{X} and \mathbf{Y} denote m -by- n matrices related by a linear transformation \mathbf{P} , such that \mathbf{X} is the original dataset and \mathbf{Y} is a re-representation of it, and further defining \vec{p}_i as the rows of \mathbf{P} , \vec{x}_i as the columns of \mathbf{X} , and \vec{y}_i as the columns of \mathbf{Y} , a change of basis is represented by the equation $\mathbf{P}\mathbf{X} = \mathbf{Y}$. The rows of \mathbf{P} , $\{\vec{p}_1, \dots, \vec{p}_m\}$ are a set of new basis vectors for expressing the columns of \mathbf{X} : by construction, the principal components.

The covariance matrix for the dataset \mathbf{X} is then given by $\mathbf{S}_x = \frac{1}{n-1}\mathbf{X}\mathbf{X}^T$, a square symmetric m -by- m matrix. As our goal is to capture meaningful features of the data, we want to remove the redundancy (i.e. covariance) from the variables, which, in turn, means diagonalising $\mathbf{X}\mathbf{X}^T$. This operation ensures that all basis vectors $\{\vec{p}_1, \dots, \vec{p}_m\}$ are orthonormal, and carries the assumption that the directions with the largest variances are the most important, i.e. principal.

3.2.2. Analysis of parameter importance using classification trees

We can explore the sensitivity of a model output of interest to the fundamental model parameters—or, equivalently, the relative importance of the parameters for classifying that output—by applying a tree-based statistical classifier (Pappenberger et al. 2006). A system of partial differential equations can be translated into a classification problem by first generating a large random sample of the multidimensional parameter space, then numerically simulating the system of partial differential equations to steady state and applying the binary classification

$$y = \begin{cases} 1 & \text{if the behaviour of interest is obtained, and} \\ 0 & \text{if not,} \end{cases}$$

for each of the sampled parameter points. Our model parameters subsequently comprise the set of variables for a tree analysis and our vector y the classified responses. Tree-based methods are nonlinear and iteratively determine which variable best classifies the training data, progressively segmenting the data by further classifications as the tree grows deeper.

Trees can capture complex interaction structures in data, but also are inherently noisy (Hastie et al. 2009), as a small error near the top may propagate into a large effect at the bottom. A remedy for this is the popular machine-learning algorithm RandomForest, developed by Breiman (2001), which grows a forest of trees, each on an independent bootstrapped sample (random sample with replacement) from the training data, and averages over the predictions from all trees to reduce the variance in the final result. RandomForest is fast, accurate, and capable of handling a high-dimensional variable space.

Each tree in a given forest has a built-in test set—the out-of-bag data, or data not included in the bootstrapped sample for that tree—which can be exploited to determine the relative importance of the variables for accurate classification. After growing a forest, the class of each point in the training data is predicted using each tree for which that point is out-of-bag. The values of a variable x are then randomly permuted while holding the others fixed, and the permuted data are passed down the tree. The relative importance of variable x for the

behaviour of interest is the difference in out-of-bag error before and after the
285 permutation, averaged over all trees (Breiman 2001).

3.3. *In vitro* experiments

Sonveaux et al. (2008) and Busk et al. (2011) considered the highly oxidative
cervical cell line SiHa, the glycolytic colon line WiDr, and the glycolytic squa-
mous carcinoma line FaDu_{dd} *in vitro* and *in vivo*. Mendoza-Juez et al. (2012) ad-
290 ditionally considered results from *in vitro* experiments on two glycolytic glioma
lines (LN18 and LN229) and a more oxidative glioma line (C6). We supplement
these data further with a set of *in vitro* experiments carried out on the highly
malignant glioblastoma cell line U87. This extends our modelling scenario to
glioblastoma tumours, which are notoriously challenging clinically and hence
295 of special interest. Moreover, the blood-brain barrier renders glioma tumours
slightly metabolically simplified—at least in terms of the variety of metabolic
substrates present in the local tissue—in comparison to body tumours (Terpstra
et al. 1998, Moreno-Sánchez et al. 2007), and thus U87 may be a good target
for future model validation *in vivo*. Finally, considering this cell line opens
300 the possibility for an eventual connection of tumour metabolic dynamics with
healthy metabolic cooperation that is known to occur between glutamatergic
neurons and glia (Kirchhoff et al. 2001, Pellerin & Magistretti 2004, Gladden
2004, Magistretti 2006, Pellerin et al. 2007, Bélanger et al. 2011).

We carried out a set of experiments to explore the metabolic characteristics
305 of U87 glioblastoma cultures *in vitro* using three metrics: glucose uptake, ex-
tracellular acidification, and oxygen consumption. Glucose was measured using
a radiolabelled analogue, [18F] fluorodeoxyglucose (FDG), which has similar
uptake kinetics to glucose. Unlike glucose, FDG is trapped in cells, and is fre-
quently used as an estimator of glycolytic flux. The rate of media acidification
310 (i.e. the change in pH over time) provides an estimate for the rate of lactate
production and additional marker of glycolysis. The rate of oxygen consumption
reflects the rate of oxidative phosphorylation.

3.3.1. *Acidification and oxygen consumption*

In a pair of experiments, U87 cells were seeded in a Seahorse XF Analyser
315 96-well cellplate (Seahorse Biosciences, USA) and grown in standard tissue cul-
ture under high-glucose conditions (25 mM) for 48 hours to allow full adhesion.
For the assay, cells were incubated with 180 μ l Seahorse medium (5mM glucose,
4mM glutamine, and 0.1mM sodium pyruvate) to replicate physiological condi-
tions. Basal rates of oxygen consumption and extracellular acidification were
320 measured using the Seahorse XF Analyser. Sodium lactate was then injected
at concentrations of 0, 3, 6, 9, 12, and 15mM and further rate data were col-
lected. Rate data were normalised to cell density as determined using Hoechst
fluorescence staining.

3.3.2. *Uptake of glucose*

325 U87 cells were trypsinised to a single cell suspension and transferred to
counting tubes. Cells were washed twice with PBS and the growth medium

was replaced with a medium containing 100kBq [18F]FDG, 4mM glutamine, and sodium lactate at concentrations of 0, 3, 6, 9, 12, and 15mM. Cells were incubated for one hour at 37C; thereafter, cells were washed in PBS and activity
330 in the cells was counted using a Beckman Coulter counter.

We note that these experiments consider only low to moderate lactate concentrations. Although lactate has been estimated to potentially reach as high as 35 mM in human brain tumours, maximum accumulation tends to occur in necrotic and cystic regions, with concentrations remaining below 15 mM in
335 the more peripheral regions (Herholz et al. 1992) which are of interest for the symbiosis hypothesis.

4. Results

Application of the complementary statistical techniques for multivariate sensitivity analysis that we discussed in 3.2—importance analysis of symbiosis (θ),
340 necrosis (γ), and hypoxia (λ) using classification trees, and principal component analysis of symbiosis (θ)—enables us to elucidate features of our multidimensional parameter space, as follows.

4.1. Consumption rates and substrate preference govern symbiosis

Our principal component analysis, a linear method, shows that the first two
345 principal components for symbiosis (θ) comprise mainly the rates of glucose and lactate consumption by the tumour— k_G and k_L , respectively—and the characteristic preference for lactate uptake, a (Figure 3a). Our complementary, nonlinear, importance analysis is in agreement with this result (Figure 3b), suggesting that we are capturing robust dependencies.

Figure 3b also reveals that the importance weighting for the extent of hypoxia is similar (though not identical) to that for symbiosis, with lactate consumption (k_L) the most important parameter for both, followed by glucose consumption (k_G) and then preference for lactate (a). However, the importance weighting for necrosis is markedly different from these (Figure 3b), with necrosis
350 depending primarily on consumption of glucose (k_G), secondarily on preference for lactate (a), and much less on consumption of lactate (k_L).

This difference in parameter dependence is further illustrated by projecting each of the three characteristics—symbiosis, necrosis, and hypoxia—onto the principal component space for symbiosis (Figure 4). Symbiosis and hypoxia
360 project similarly (though not identically) to one another, while necrosis projects differently from both.

The Michaelis-Menten constants for glucose and lactate uptake (n_G and n_L , respectively) have relatively small principal component weightings for symbiosis and are relatively unimportant for all three characteristics. This is perhaps
365 surprising in view of the variability in n_L across tumour cell lines *in vitro* (Mendoza-Juez et al. 2012).

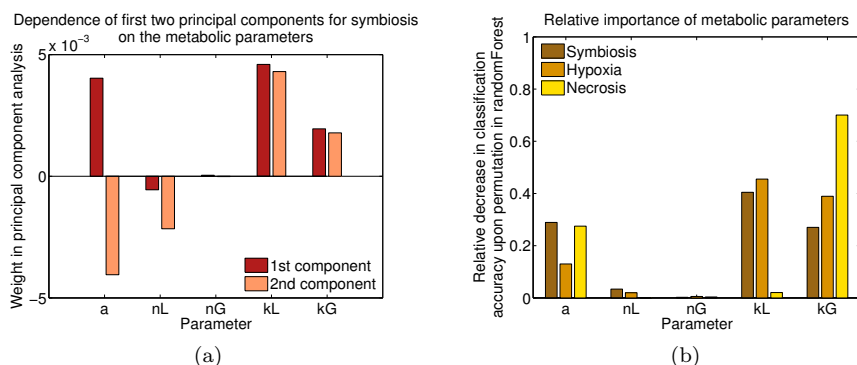


Figure 3: **Principal component weighting and importance of parameters.** (a) Weights assigned to each parameter from the original parameter space of Equations (9)-(12) in linear combinations comprising the first two principal components for symbiosis, described in Section 3.2.1; and (b) relative importance, as defined in Section 3.2.2, of the parameters for classifying the presence of symbiosis, θ (brown), tissue hypoxia, λ (tan), and necrosis, γ (yellow). The parameters are: expression of MCT1 relative to GLUT (a), the half-saturation point for uptake of lactate (n_L) and glucose (n_G), and the rates of consumption of lactate (k_L), and glucose (k_G).

4.2. Symbiosis exhibits the expected effects

Plotting symbiosis, necrosis, and hypoxia each against the three most important parameters pairwise (Figure 5) indicates that symbiosis can occur when consumption of glucose (k_G) and of lactate (k_L) are both high and the preference for lactate (a) is not small (top row of Figure 5). Additionally, broadly speaking it appears that symbiosis is more pronounced when $k_L > k_G$. We note that symbiosis requires the tumour to be extremely active metabolically, as k_G must be above 10^2 mM/day and k_L above 10^3 mM/day for it to occur. Quantitative measurements of *in vivo* metabolic consumption are, to our knowledge, difficult to come by, but future experiments could potentially be focussed in this direction to help determine whether these are plausible parameter ranges for tumours *in vivo*.

The extent of hypoxia is highest when consumption of glucose and lactate (k_G and k_L , respectively) are both very high, though it is less dependent than symbiosis on the preference for lactate (a) (middle row of Figure 5). The fact that hypoxia does not occur in the regime of lower metabolic consumption rates suggests that metabolically less-active tumours of the size considered here do not exhibit the nutrient gradients that are needed to drive the development of a spatial symbiosis.

Necrosis is mostly—though not entirely—mutually exclusive to symbiosis, reaching high values when glucose consumption (k_G) is very high and the preference for lactate (a) is small (bottom row of Figure 5). Plotting a representative sample from this region of parameter space over time reveals that the cause of this necrosis is glucose starvation, rather than acidosis or severe anoxia (Figure 6). There is, however, a small region of parameter space in which symbiosis

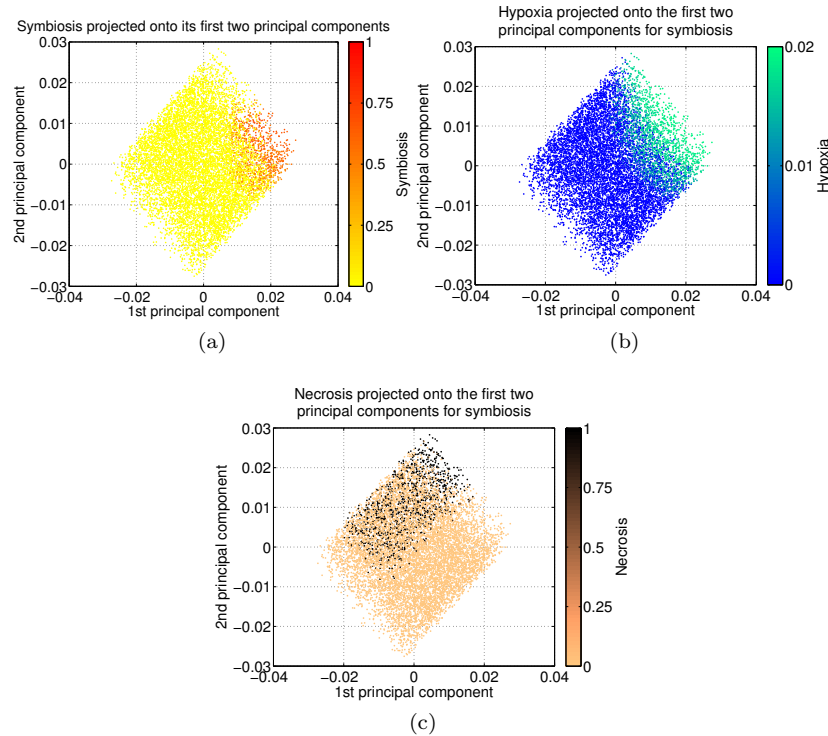


Figure 4: **Projection onto the symbiosis principal component space.** Projection onto the first two principal components for symbiosis, as defined in Section 3.2.1, of (a) symbiosis, θ , (b) hypoxia, λ , and (c) necrosis, γ . The projection of symbiosis onto the space of its first two principal components is similar to the projection of hypoxia onto the same space, while the projection of necrosis onto the same space is different from these.

and necrosis are not mutually exclusive: when the preference for lactate (a) is on the order of one, and consumption of glucose (k_G) is on the order of 10^4 , both symbiosis and necrosis can occur. It would be informative to determine whether or not this small parameter region is narrow enough to be considered a biological fine-tuning; but this would require a mapping between this model parameter region and the space of clinically plausible tumour characteristics, which again points to the need for quantitative *in vivo* measurements of the metabolic parameters.

Figures 7 and 8 illustrate the averaged steady-state system behaviours over the tumour domain for the parameter regimes which produce either strongly symbiotic behaviour, with lactate consumption dominating over glucose consumption near the oxygenated tumour edge (Figure 7), or weakly- or non-symbiotic behaviour, with lactate consumption at the tumour edge which does not strikingly dominate over glucose consumption at the tumour edge (Figure 8). On average, the strongly-symbiotic regime exhibits lower lactate, higher

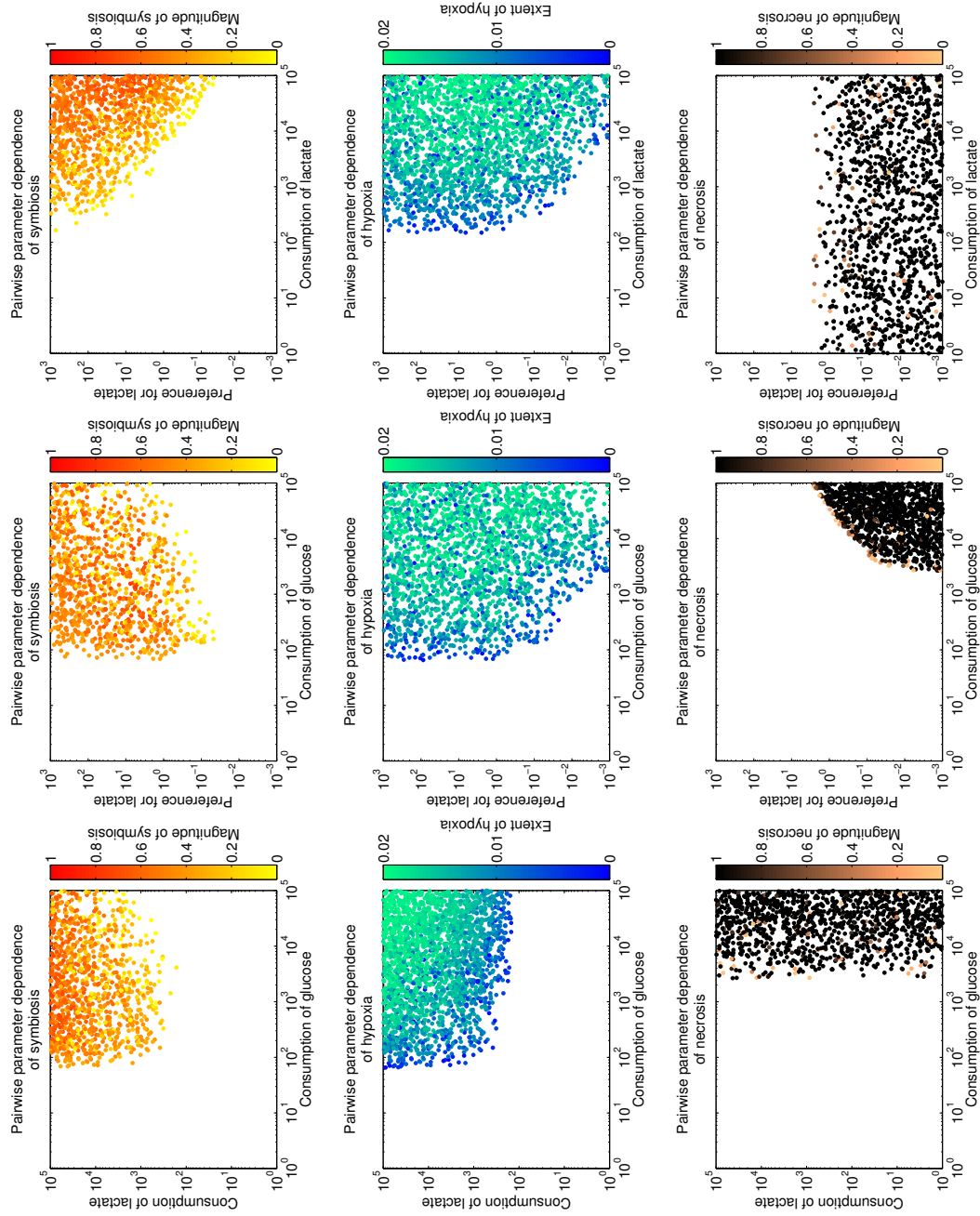


Figure 5: **Symbiosis, hypoxia, and necrosis in the space of important parameters.** Symbiosis (top row), hypoxia (middle row), and necrosis (bottom row), for numerical simulations of Equations (9)-(12) with 10^4 random samples of the parameter space, plotted pairwise against the three most important parameters: rates of consumption of glucose (k_G) and lactate (k_L), and characteristic preference for lactate (α).

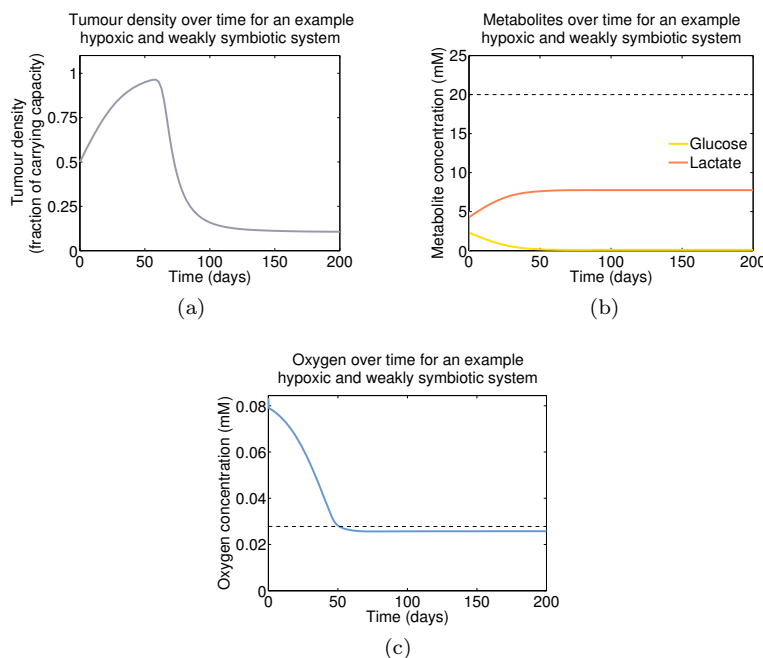


Figure 6: **Cause of necrosis under weak/no symbiosis.** Species profiles in the tumour core over time for a representative sample from the weakly-/non-symbiotic parameter regime governing Equations (9)-(12). Shown are the (a) tumour density (grey), (b) glucose (yellow) and lactate (red) concentrations, and (c) oxygen concentration (blue). Dotted lines in (b) and (c) indicate the acidosis threshold σ_A and the hypoxia threshold σ_H , respectively.

glucose, and a greater extent of hypoxia over the tumour domain than does the less-symbiotic regime. The latter additionally exhibits considerable necrosis in the tumour core.

410 4.3. *MCT1 inhibition increases oxygenation but not necrosis*

The first part of the symbiosis hypothesis concerns the establishment and beneficial effects of a well-defined spatial symbiosis, which we have considered thus far. The second part proposes that inhibiting symbiosis by blocking the monocarboxylate transporter 1 (MCT1) forces cells near the tumour edge that were consuming lactate by OXPHOS to instead consume glucose by glycolysis, such that MCT1-inhibition has the dual effect of starving the tumour core and increasing the extent of tissue oxygenation (Sonveaux et al. 2008). The latter effect, if confirmed, would make MCT1-inhibition a promising method for radiosensitising symbiotic tumours.

420 We simulate MCT1-inhibition by CHC—the treatment strategy employed by both Sonveaux et al. (2008) and Busk et al. (2011) *in vivo*—by numerically solving Equations (9)-(12) with the same parameter values from our multi-dimensional parameter space as before, but now with lactate uptake blocked by

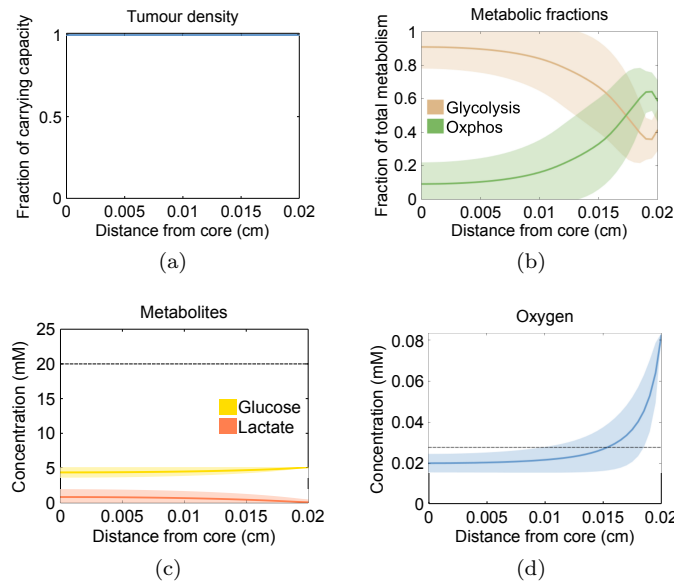


Figure 7: **Symbiotic behaviour of Equations (9)-(12)**. Averaged spatial behaviours of the (a) tumour density, (b) metabolic fractions, (c) metabolite concentrations, and (d) oxygen concentration, at steady state. Shown are the means (curves) and standard deviations (shaded areas) from 10^4 uniformly distributed samples from the parameter region giving rise to symbiotic behaviour; that is, from the region in which consumption of lactate (k_L) and glucose (k_G) are high with $k_L > k_G$, and the characteristic preference for lactate (a) is high. Fixed parameters are listed in the top portion of Table 1.

setting $k_L = 0$. Contrary to the prediction of Sonveaux et al. (2008), blocking
 425 MCT1 has no effect on necrosis in our model system—except when, in cases of
 high hypoxia, it *decreases* necrosis (Figure 9a-c). These latter cases are mostly,
 but not entirely, limited to tumours which were non-symbiotic in wildtype, and
 thus the effect of CHC may be less straightforward than assumed.

CHC treatment does have the expected effect on hypoxia in our model system,
 430 in that the extent of oxygenation is increased when lactate uptake is inhibited
 (Figure 9b-f). However, this effect correlates only loosely with the amount
 of symbiosis exhibited by the wildtype system, with substantial reductions in
 the extent of hypoxia occurring even in the absence of wildtype symbiosis. In-
 435 stead, the effect correlates exactly with the extent of hypoxia that was already
 present in the wildtype system, with greater reductions occurring for tumours
 with more extensive wildtype hypoxia.

4.4. Experiments suggest weak symbiosis in U87 tumours

One of the model criteria for strongly symbiotic behaviour, as discussed in
 Sections 4.1 and 4.2, is that the tumour exhibits a strong characteristic prefer-
 440 ence for lactate over glucose as a metabolic substrate (i.e. that a is large). From

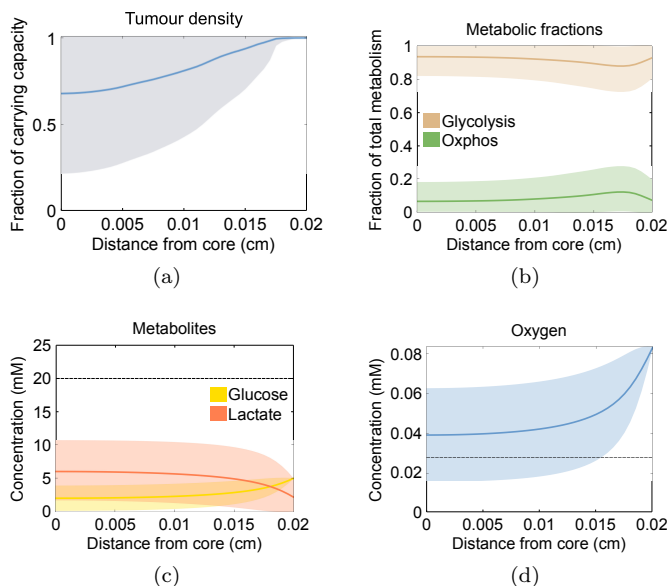


Figure 8: **Weakly- or non-symbiotic behaviour of Equations (9)-(12)**. Averaged spatial behaviours of the (a) tumour density, (b) metabolic fractions, (c) metabolite concentrations, and (d) oxygen concentration, at steady state. Shown are the means (curves) and standard deviations (shaded areas) from 10^4 uniformly distributed samples from the parameter region giving rise to weakly- or non-symbiotic behaviour; that is, from the region in which consumption of lactate (k_L) and glucose (k_G) are high with $k_G > k_L$, and the characteristic preference for lactate (a) is low. Fixed parameters are listed in the top portion of Table 1.

our *in vitro* experiments on the metabolic characteristics of U87 tumours (outlined in Section 3.3), it is evident that increasing the amount of available lactate leads to a reduction in the extracellular acidification rate (Figure 10a) and a corresponding increase in the oxygen consumption rate (Figure 10b), which together signal consumption of lactate by oxidative phosphorylation. However, there is only a slight decrease in glucose uptake with increasing lactate concentration (Figure 10c), indicating that the cells do not exhibit a strong characteristic preference for lactate but instead consume glucose at a similar rate whether or not lactate is available.

A caveat here is that glutamine and pyruvate were present in the system due to incubation of the cells in standard medium, and, given the interconnectedness of the glucose/lactate/glutamine/pyruvate metabolic pathways, we cannot be sure of the impact of these metabolites. However, we expect our salient result—a qualitative indication of whether or not U87 cells exhibit a marked substrate preference—to hold so long as glutamine and pyruvate do not together suppress a preference that would have been strong in their absence.

Provided this assumption is valid, these experiments suggest that the parameter representing preference for lactate (a) is likely to be small, which places U87 glioblastoma tumours approximately into the regime in which only weakly sym-

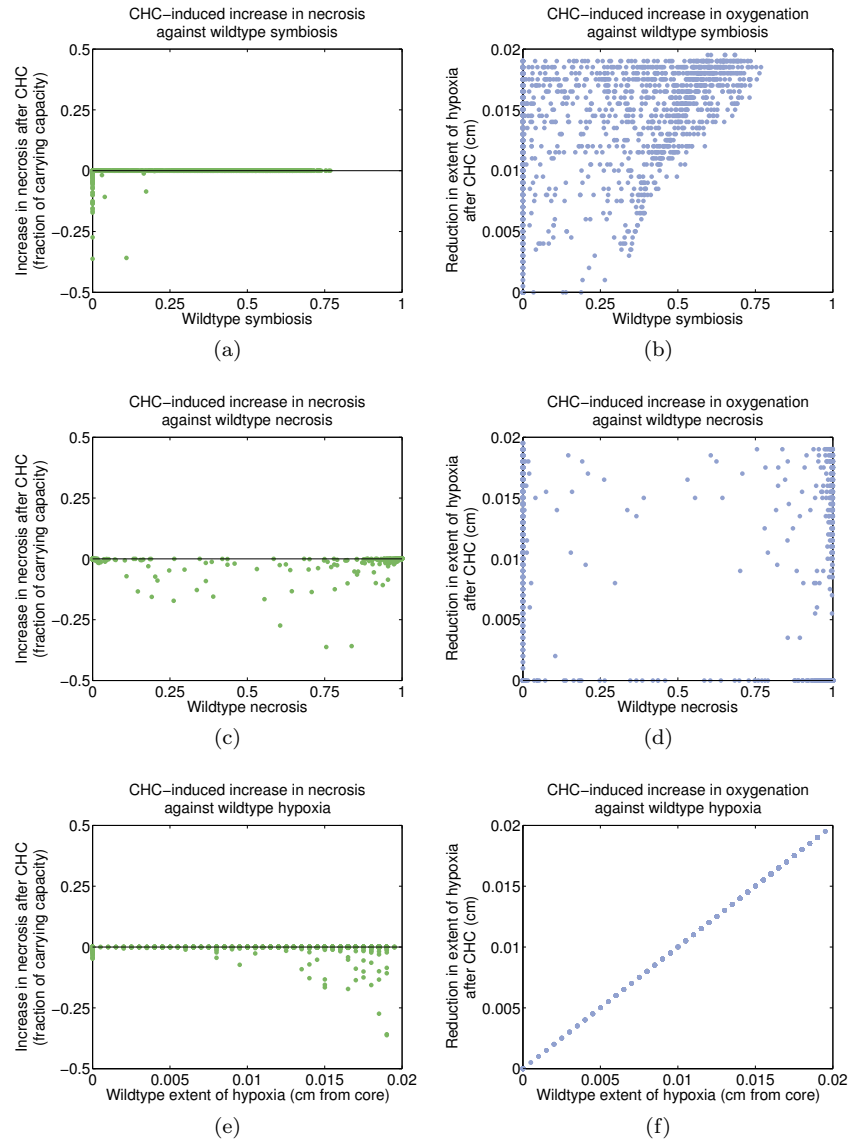


Figure 9: **Effect of MCT1 inhibition on necrosis and hypoxia.** Increase in necrosis (left column) and extent of tissue oxygenation (right column) relative to wildtype, obtained by numerically solving Equations (9)-(12) with 10^4 parameter points sampled uniformly from the ranges in the bottom portion of Table 1, and comparing these to solutions for the same parameter points but with $k_L = 0$ to simulate MCT1 inhibition by CHC. Shown are the increase in necrosis and increase in oxygenation as functions of the amount of symbiosis (top row), necrosis (middle row), and hypoxia (bottom row) that were already occurring in the wildtype systems.

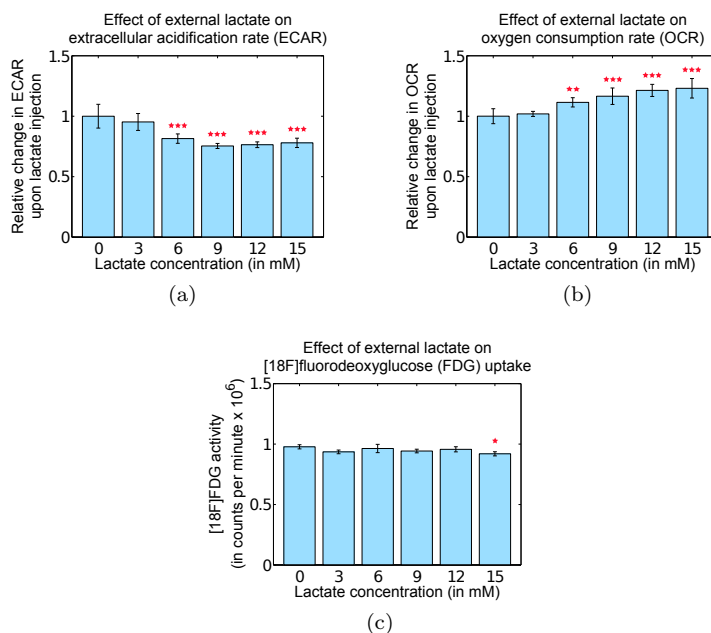


Figure 10: **Experimental metabolic dynamics of U87 glioma cells *in vitro*.** Metabolic rate dynamics in U87 glioma cells cultured *in vitro* over varying concentrations of lactate in the medium, as outlined in Section 3.3. (a) Extracellular acidification rate (ECAR), a marker of the net effect of glycolysis and lactate consumption; (b) oxygen consumption rate (OCR), a marker of oxidative phosphorylation; and (c) activity of fluorodeoxyglucose ([18F]FDG), a marker of glycolysis. Multiple comparison of a balanced one-way analysis of variance (ANOVA) was performed on the data to test whether the mean measurement for each non-zero lactate concentration was significantly different from the zero lactate concentration. One star indicates a p-value less than 0.05 (but greater than 0.01), two stars indicate a p-value less than 0.01 (but greater than 0.001), and three stars indicate a p-value less than 10^{-4} . Increasing the concentration of available lactate leads to a statistically significant decrease in ECAR and a significant increase in OCR, but a much less significant change in [18F]FDG, suggesting consumption of lactate by oxidative phosphorylation without a strong characteristic preference for lactate over glucose as a metabolic substrate.

460 biotic behaviour develops—but U87 tumours are highly malignant. This raises
the question of how symbiosis might correlate with tumour aggressiveness. It
is perhaps possible that symbiotic tumours are stabilised by their metabolic
cooperation and insulated from oxygen-dependent treatments, but at the cost
of being less malignant than non-symbiotic tumours. This connection, or lack
465 thereof, remains to be explored.

5. Discussion

In summary, our aim has been to examine the symbiosis hypothesis put forward by Sonveaux et al. (2008) and address the disagreement in *in vivo*

experimental support between their results and those of Busk et al. (2011). We
470 have pursued this by developing a minimal spatial model of dual glucose-lactate
consumption, which is an extension, with simplifications, of a non-spatial model
presented by Mendoza-Juez et al. (2012). Our main findings from this model
are that, while symbiosis arises over a substantial portion of the parameter
space, it requires cells to be extremely metabolically active, and whether such a
475 parameter regime is clinically realistic remains to be established. For the most
part, the occurrence of symbiosis is mutually exclusive with the occurrence
of necrosis in the tumour core, and, as predicted by Sonveaux et al. (2008),
the latter is caused by nutrient deprivation (rather than by acidosis or severe
anoxia). However, symbiosis and necrosis do not exhibit the same dependence
480 on the model parameters, indicating that symbiosis may not directly ‘rescue’
tumours from nutrient starvation.

We also have found that simulation of MCT1 inhibition does not cause the
increase in necrosis in the tumour core that was expected to result from in-
creased glucose consumption by cells at the formerly lactate-consuming tumour
485 edge. This places our results in line with those of Busk et al. (2011), who saw
no increase in necrosis upon CHC administration *in vivo*. MCT1 inhibition
does cause an increase in the extent of tissue oxygenation in our model system,
as predicted by Sonveaux et al. (2008), but this correlates with the extent of
hypoxia that was present in the wildtype system rather than with its strength
490 of symbiosis. This result gives the promising indication that CHC may be a vi-
able radiosensitisation strategy wherever there is oxidative lactate consumption,
independently of whether the tumour exhibits a spatially well-defined symbiosis.

Furthermore, we have demonstrated experimentally that U87 glioma tu-
mours consume lactate but do not exhibit a discernible characteristic preference
495 for lactate over glucose as a metabolic substrate (Figure 10), one of the condi-
tions required for strongly symbiotic behaviour under our modelling framework.
U87 tumours are known to be highly malignant, and thus our experimental re-
sults compel us to take a step beyond the original hypothesis and raise the new
question of whether symbiosis, if indeed it occurs *in vivo*, may be advantageous
500 or disadvantageous (or neither) for clinical malignancy. Under some conditions
necrosis appears to be associated with tumour-promoting inflammation and ac-
celerated tumour growth (Degenhardt et al. 2006), such that the relationship
between necrosis-reducing symbiotic behaviour and malignancy may not be a
simple one.

505 We caution that our model is an abstract, minimal representation of tumour
glucose-lactate metabolism, and real tumour metabolic systems are a great deal
more complicated than what we have considered here. As such, our conclusions
should be taken more as theoretical, in-principle statements than as prescrip-
tive of what occurs in real tumours *in vivo*. The framework developed here can
510 be extended in a variety of directions. For example, we do not accommodate
vasculature dynamics here, but instead assume the somewhat abstract feature
of a fixed capillary shell, and hence the model cannot be used to explore the
vasoactive role of lactate (Ido et al. 2003, Hein et al. 2006) or the effect that
MCT1 inhibition may have on angiogenesis (Sonveaux et al. 2012). It would also

515 be useful to incorporate intracellular lactate (Parks et al. 2013) into the modelling framework for comparison with experiments by Colen et al. (2011) which induced tumour necrosis by blocking lactate efflux, or to extend the framework further via consideration of glutamate and glutamatergic signalling.

It is worth noting that our tumour radius has been fixed at 0.02 cm throughout, to capture the lengthscale of a typical avascular tumour, and for simplicity we have not considered varying this here. However, we expect that the consequences would be straightforward—a smaller tumour would exhibit fewer spatial features due to less-pronounced gradients, and a larger tumour would develop a necrotic core with a surviving region, of a length similar to that considered here, in which the metabolic dynamics predicted by our model would occur. A systematic examination of different lengthscales, however, could prove useful for determining the earliest point in tumour growth at which spatial features may develop. Similarly, we have asserted that our model system can be considered to describe localised pockets within a large, heterogeneous tumour; but it would be beneficial to explicitly model such a tumour as a whole, as this would introduce spatial complexities and facilitate more direct comparisons with medical neuro-imaging *in vivo*.

Our *in vitro* experiments were preliminary, and served simply to facilitate some speculation as to whether tumours might exhibit some characteristic preferences regarding metabolic substrates, and where such preferences might place the tumours in our model parameter space. These experiments should in future be extended to a series of microfluidic (Whitesides 2006, Huang et al. 2011, Zhang & Nagrath 2013) or *in vivo* measurements of metabolic consumption for a variety of tumour types—similarly to Sonveaux et al. (2008) and Busk et al. (2011) but with local glucose and lactate consumption rates measured quantitatively—as these would help to place tumours in our model parameter space far more accurately than we have attempted here. Such experiments could thereby more conclusively establish whether symbiosis is likely to be a significant feature of tumours *in vivo*.

Nevertheless, the minimal spatial model presented herein has enabled some predictions which can be tested experimentally—in particular, the relationship (or lack thereof) between the occurrence of symbiosis and degree of clinical malignancy can be investigated—and which support the *in vivo* observations of Busk et al. (2011) with regard to CHC-induced necrosis over those of Sonveaux et al. (2008). Hence, we hope that this work is illustrative of the gains that can be made by integrating mathematical modelling with experiments for clearer and more rigorous testing of hypotheses in oncology.

Acknowledgements

JBM and PKM acknowledge the generous hospitality of the Instituto de Matemática Aplicada a la Ciencia y la Ingeniería, Universidad de Castilla-La Mancha. JBM would like to thank Dr. Gregory A. Ross for helpful feedback on the manuscript.

References

- 560 Airley, R., Loncaster, J., Davidson, S., Bromley, M., Roberts, S., Patterson, A., Hunter, R., Stratford, I., & West, C. (2001). Glucose transporter Glut-1 expression correlates with tumour hypoxia and predicts metastasis-free survival in advanced carcinoma of the cervix. *Clinical Cancer Research*, *7*, 928–934.
- 565 Basanta, D., Ribba, B., Watkin, E., You, B., & Deutsch, A. (2011). Computational analysis of the influence of microenvironment on carcinogenesis. *Mathematical Biosciences*, *229*, 22–29.
- Bélangier, M., Allaman, I., & Magistretti, P. (2011). Brain energy metabolism: focus on astrocyte-neuron metabolic cooperation. *Cell Metabolism*, *14*, 724–738.
- 570 Berra, E., Benizri, E., Ginouvés, A., Volmat, V., Roux, D., & Pouyssegur, J. (2003). HIF prolyl-hydroxylase 2 is the key oxygen sensor setting low steady-state levels of HIF-1 α in normoxia. *The EMBO Journal*, *22*, 4082–4090.
- Blum, J. (1960). Concentration profiles in and around capillaries. *American Journal of Physics*, *198*, 991.
- 575 Boubaker, K., Flepp, M., Sudre, P., Furrer, H., Haensel, A., Hirschel, B., Boggian, K., Chave, J., Bernasconi, E., Egger, M., Opravil, M., Rickenbach, M., Francioli, P., & Telenti, A. (2001). Hyperlactatemia and antiretroviral therapy: the Swiss HIV cohort study. *Clinical Infectious Diseases*, *33*, 1931–1937.
- 580 Boumezbeur, F., Peterson, K., Cline, G., Mason, G., Behar, K., Shulman, G., & Rothman, D. (2010). The contribution of blood lactate to brain energy metabolites in humans measured by dynamic ^{13}C nuclear magnetic resonance spectroscopy. *The Journal of Neuroscience*, *30*, 13983–13991.
- Breiman, R. (2001). Random Forests. *Machine Learning*, *45*, 5–32.
- Burgman, P., O'Donoghue, J., Humm, J., & Ling, C. (2001). Hypoxia-induced increase in FDG uptake in MCF7 cells. *Journal of Nuclear Medicine*, *42*, 170–175.
- 585 Busk, M., Walenta, S., Mueller-Klieser, W., Steiniche, T., Jakobsen, S., Horsman, M., & Overgaard, J. (2011). Inhibition of tumour lactate oxidation: consequences of the tumour microenvironment. *Radiotherapy and Oncology*, *99*, 404–411.
- 590 Cariboni, J., Gatelli, D., Liska, R., & Saltelli, A. (2007). The role of sensitivity analysis in ecological modelling. *Ecological Modelling*, *203*, 2007.
- Cheeti, S., Warriar, B., & Lee, C. (2006). The role of monocarboxylate transporters in uptake of lactic acid in HeLa cells. *International Journal of Pharmaceutics*, *325*, 48–54.

- 595 Colen, C., Shen, Y., Ghoddoussi, F., Yu, P., Francis, T., Koch, B., Monterey, M., Galloway, M., Sloan, A., & Mathupala, S. (2011). Metabolic targeting of lactate efflux by malignant glioma inhibits invasiveness and induces necrosis: an in vivo study. *Neoplasia*, *13*, 620–632.
- 600 Cutler, R., Edwards, T., Beard, K., Cutler, A., Hess, K., Gibson, J., & Lawler, J. (2007). Random forests for classification in ecology. *Ecology*, *88*, 2783–2792.
- Daşu, A., Tuma-Daşu, I., & Karlsson, M. (2003). Theoretical simulation of tumour oxygenation and results from acute and chronic hypoxia. *Physics in Medicine and Biology*, *48*, 2829–2842.
- 605 De'ath, G., & Fabricius, K. (2000). Classification and regression trees: a powerful yet simple technique for ecological data analysis. *Ecology*, *81*, 3178–3192.
- Degenhardt, K., Mathew, R., Beaudoin, B., Bray, K., Anderson, D., Chen, G., Mukherjee, C., Shi, Y., Gélinas, C., Fan, Y., Nelson, D., Jin, S., & White, E. (2006). Autophagy promotes tumour cell survival and restricts necrosis, inflammation, and tumourigenesis. *Cancer Cell*, *10*, 51–64.
- 610 Elstrom, R., Bauer, D., Buzzai, M., Karnauskas, R., Harris, M., Plas, D., Zhuang, H., Cinalli, R., Alavi, A., Rudin, C., & Thompson, C. (2004). Akt stimulates aerobic glycolysis in cancer cells. *Cancer Research*, *64*, 3892–3899.
- Feron, O. (2009). Pyruvate into lactate and back: from the Warburg effect to symbiotic energy fuel exchange in cancer cells. *Radiotherapy and Oncology*, *92*, 329–333.
- 615 Fieberg, J., & Jenkins, K. (2005). Assessing uncertainty in ecological systems using global sensitivity analyses: a case example of simulated wolf reintroduction effects on elk. *Ecological Modelling*, *187*, 259–280.
- 620 Figley, C. (2011). Lactate transport and metabolism in the human brain: implications for the astrocyte-neuron lactate shuttle hypothesis. *The Journal of Neuroscience*, *31*, 4768–4770.
- Gatenby, R., Smallbone, K., Maini, P., Rose, F., Averill, J., Nagle, R., Worrall, L., & Gillies, R. (2007). Cellular adaptations to hypoxia and acidosis during somatic evolution of breast cancer. *British Journal of Cancer*, *97*, 646–653.
- 625 Gillies, R., & Gatenby, R. (2007). Hypoxia and adaptive landscapes in the evolution of carcinogenesis. *Cancer and Metastasis Reviews*, *26*, 311–317.
- Gladden, L. (2004). Lactate metabolism: a new paradigm for the third millennium. *The Journal of Physiology*, *558*, 5–30.
- 630 Hastie, T., Tibshirani, R., & Friedman, J. (2009). *The Elements of Statistical Learning: Data Mining, Inference, and Prediction*. Springer Series in Statistics.

- Hein, T., Xu, W., & Kuo, L. (2006). Dilation of retinal arteriols in response to lactate: role of nitric oxide, guanylyl cyclase, and ATP-sensitive potassium channels. *Investigative Ophthalmology and Visual Science*, *47*, 693–699.
- Herholz, K., Heindel, W., Luyten, P., denHollander, J., Pietrzyk, U., Voges, J., Kugel, H., Friedmann, G., & Heiss, W. (1992). In vivo imaging of glucose consumption and lactate concentration in human gliomas. *Annals of Neurology*, *31*, 319–327.
- Homma, T., & Saltelli, A. (1996). Importance measures in global sensitivity analysis of nonlinear models. *Reliability Engineering and System Safety*, *52*, 1–17.
- Huang, Y., Agrawal, B., Sun, D., Kuo, J., & Williams, J. (2011). Microfluidics-based devices: new tools for studying cancer and cancer stem cell migration. *Biomicrofluidics*, *5*, 1–17.
- Huckabee, W. (1961). Abnormal resting blood lactate: the significance of hyperlactatemia in hospitalized patients. *The American Journal of Medicine*, *30*, 833–839.
- Ido, Y., Chang, K., & Williamson, J. (2003). NADH augments blood flow in physiologically activated retina and visual cortex. *Proceedings of the National Academy of Sciences USA*, *101*, 653–658.
- James, F., & McCulloch, C. (1990). Multivariate analysis in ecology and systematics: panacea or Pandora’s box? *Annual Review of Ecology and Systematics*, *21*, 129–166.
- Jiang, Y., Pjesivac-Grbovic, J., Cantrell, C., & Freyer, J. (2005). A multiscale model for avascular tumour growth. *Biophysical Journal*, *89*, 3884–3894.
- Kirchhoff, F., Dringen, R., & Giaume, C. (2001). Pathways of neuron-astrocyte interactions and their possible role in neuroprotection. *European Archives of Psychiatry and Clinical Neuroscience*, *251*, 159–169.
- Koppenol, W., Bounds, P., & Dang, C. (2011). Otto Warburg’s contributions to current concepts of cancer metabolism. *Nature Reviews Cancer*, *11*, 325–337.
- Levrault, J., Ciebiera, J., Chave, S., Rabary, O., Jambou, P., Carles, M., & Grimaud, D. (1998). Mild hyperlactatemia in stable septic patients is due to impaired lactate clearance rather than overproduction. *American Journal of Respiratory and Critical Care Medicine*, *157*, 1021–1026.
- Liu, Y., Li, Y., Tian, R., Liu, W., Fei, Z., Long, Q., Wang, X., & Zhang, X. (2009). The expression and significance of HIF-1 α and GLUT-3 in glioma. *Brain Research*, *1304*, 149–154.
- Magistretti, P. (2006). Neuron-glia metabolic coupling and plasticity. *Journal of Experimental Biology*, *209*, 2304–2311.

- Marino, S., Hogue, I., Ray, C., & Kirschner, D. (2008). A methodology for performing the global uncertainty and sensitivity analysis in systems biology. *Journal of Theoretical Biology*, *254*, 178–196.
- Marxsen, J., Stengel, P., Doege, K., Heikkinen, P., Jokilehto, T., Wagner, T., Jelkmann, W., Jaakkola, P., & Metzen, E. (2004). Hypoxia-inducible factor-1 (HIF-1) promotes its degradation by induction of HIF- α -prolyl-4-hydroxylases. *Biochemical Journal*, *381*, 761–767.
- McEwen, B., & Reagan, L. (2004). Glucose transporter expression in the central nervous system: relationship to synaptic function. *European Journal of Pharmacology*, *490*, 13–24.
- Mendoza-Juez, B., Martín-González, A., Calvo, G., & Pérez-García, V. (2012). A mathematical model for the glucose-lactate metabolism of in vitro cancer cells. *Bulletin of Mathematical Biology*, *74*, 1125–1142.
- Moreno-Sánchez, R., Rodrigo-Enríquez, S., Marín-Hernández, A., & Saavedra, E. (2007). Energy metabolism in tumour cells. *Federation of European Biochemical Societies Journal*, *274*, 1393–1418.
- Pappenberger, F., Iorgulescu, I., & Beven, K. (2006). Sensitivity analysis based on regional splits and regression trees (SARS-RT). *Environmental Modelling and Software*, *21*, 976–990.
- Parks, S., Chiche, J., & Pouyssegur, J. (2013). Disrupting proton dynamics and energy metabolism for cancer therapy. *Nature Reviews Cancer*, *13*, 611–623.
- Pavlidis, S., Tsigos, A., Vera, I., Flomenberg, N., Frank, P., Casimiro, M., Wang, C., Pestell, R., Martinez-Outschoorn, U., Howell, A., Sotgia, F., & Lisanti, M. (2010). Transcriptional evidence for the ‘Reverse Warburg Effect’ in human breast cancer tumour stroma and metastasis: similarities with oxidative stress, inflammation, Alzheimer’s disease, and ‘Neuron-Glia Metabolic Coupling’. *Aging*, *2*, 185–199.
- Pavlidis, S., Whitaker-Menezes, D., Castello-Cros, R., Flomenberg, N., Witkiewicz, A., Frank, P., Casimiro, M., Wang, C., Fortina, P., Addya, S., Pestell, R., Martinez-Outschoorn, U., Sotgia, F., & Lisanti, M. (2009). The reverse Warburg effect: aerobic glycolysis in cancer associated fibroblasts and the tumour stroma. *Cell Cycle*, *8*, 3984–4001.
- Pellerin, L., Bouzier-Sore, A., Aubert, A., Serres, S., Merle, M., Costalat, R., & Magistretti, P. (2007). Activity-dependent regulation of energy metabolism by astrocytes: an update. *Glia*, *55*, 1251–1262.
- Pellerin, L., & Magistretti, P. (2004). Neuroenergetics: calling upon astrocytes to satisfy hungry neurons. *The Neuroscientist*, *10*, 53–62.
- Pfeiffer, T., Schuster, S., & Bonhoeffer, S. (2001). Cooperation and competition in the evolution of ATP-producing pathways. *Science*, *292*, 504–507.

- 710 Rockne, R., Rockhill, J., Mrugala, M., Spence, A., Kalet, I., Hendrickson, K.,
Lai, A., Cloughesy, T., Alvord, E., & Swanson, K. (2010). Predicting the
efficacy of radiotherapy in individual glioblastoma patients in vivo: a mathe-
matical modelling approach. *Physics in Medicine and Biology*, *55*, 3271–3285.
- Saltelli, A., & Annoni, P. (2010). How to avoid a perfunctory sensitivity analysis.
715 *Environmental Modelling and Software*, *25*, 1508–1517.
- Saltelli, A., Ratto, M., Andres, T., Campolongo, F., Cariboni, J., Gatelli, D.,
Saisana, M., & Tarantola, S. (2008). *Global Sensitivity Analysis*. John Wiley
and Sons.
- Schiesser, W., & Griffiths, G. (2009). *A Compendium of Partial Differential*
720 *Equation Models: Method of Lines Analysis With Matlab*. Cambridge Uni-
versity Press.
- Semenza, G. (2010). HIF-1: upstream and downstream of cancer metabolism.
Current Opinion in Genetics and Development, *20*, 97–106.
- Seyfried, T., & Shelton, L. (2010). Cancer as a metabolic disease. *Nutrition*
725 *and Metabolism*, *7*, 1–22.
- Sherwood, L. (2007). *Human physiology: from cells to systems*. Brooks/Cole
Publishing.
- Sonveaux, P., Copetti, T., Saedeleer, C. D., Vegran, F., & Verrax, J. (2012).
730 Targeting the lactate transporter MCT1 in endothelial cells inhibits lactate-
induced HIF-1 activation and tumour angiogenesis. *PLoS One*, *7*, e33418.
- Sonveaux, P., Végran, F., Schroeder, T., Wergin, M., Verrax, J., Rabbani, Z.,
de Saedeleer, C., Kennedy, K., Diepart, C., Jordan, B., Kelley, M., Gallez,
B., Wahl, M., Feron, O., & Dewhirst, M. (2008). Targeting the lactate-fueled
735 respiration selectively kills hypoxic tumour cells in mice. *Journal of Clinical*
Investigation, *118*, 3930–3942.
- Terpstra, M., Gruetter, R., High, W., Mescher, M., DelaBarre, L., Merkle, M.,
& Garwood, M. (1998). Lactate turnover in rat glioma measured by in vivo
nuclear magnetic resonance spectroscopy. *Cancer Research*, *58*, 5083–5088.
- Vander Heiden, M., Cantley, L., & Thompson, C. (2009). Understanding the
740 Warburg effect: the metabolic requirements of cell proliferation. *Science*,
324, 1029–1033.
- Voisin, P., Bouchaud, V., Merle, M., Diolez, P., Duffy, L., Flint, K., Franconi,
J., & Bouzier-Sore, A. (2010). Microglia in close vicinity of glioma cells:
745 correlation between phenotype and metabolic alterations. *Frontiers in Neu-*
roenergetics, *2*, 131.
- Whitesides, G. (2006). The origins and future of microfluidics. *Nature*, *442*,
368–373.

- Williams, K., Telfer, B., Airley, R., Peters, H., Sheridan, M., van-der Kogel, A.,
Harris, A., & Stratford, I. (2002). A protective role for HIF-1 in response to
750 redox manipulation and glucose deprivation: implications for tumourigenesis.
Oncogene, *21*, 282–290.
- Wincewicz, A., Sulkowska, M., Koda, M., & Sulkowski, S. (2007). Clinicopatho-
logical significance and linkage of the distribution of HIF-1a and GLUT-1 in
755 human primary colorectal cancer. *Pathology and Oncology Research*, *13*, 15–
20.
- Wu, J., Dhingra, R., Gambhir, M., & Remais, J. (2013). Sensitivity analysis of
infectious disease models: methods, advances and their application. *Journal
of the Royal Society Interface*, *10*, 20121018.
- Zhang, Z., & Nagrath, S. (2013). Microfluidics and cancer: are we there yet?
760 *Biomedical Microdevices*, *15*, 595–609.