

# Effects of small-scale clustering of flowers on pollinator foraging behaviour and flower visitation rate

Asma Akter<sup>1,2</sup>, Paolo Biella<sup>1,2</sup> & Jan Klecka<sup>1,\*</sup>

<sup>1</sup> Institute of Entomology, Biology Centre of the Czech Academy of Sciences, České Budějovice, Czech Republic

<sup>2</sup> Department of Zoology, Faculty of Science, University of South Bohemia, České Budějovice, Czech Republic

\* [jan.klecka@entu.cas.cz](mailto:jan.klecka@entu.cas.cz)

## Abstract

Plants are often distributed in clusters of various sizes and have a variable number of flowers per inflorescence. This small-scale spatial clustering affects insect foraging strategies and plant reproductive success. In our study, we aimed to determine how visitation rate and foraging behaviour of pollinators depend on the number of flowers per plant and on the size of clusters of multiple plants using *Dracocephalum moldavica* (Lamiaceae) as a target species. We measured flower visitation rate by observations of insects visiting single plants and clusters of plants with different numbers of flowers. Detailed data on foraging behaviour within clusters of different sizes were gathered for honeybees, *Apis mellifera*, the most abundant visitor of *Dracocephalum* in the experiments. We found that the total number of flower visitors increased with the increasing number of flowers on individual plants and in larger clusters, but less than proportionally. Although individual honeybees visited more flowers in larger clusters, they visited a smaller proportion of flowers, as has been previously observed. Consequently, visitation rate per flower and unit time peaked in clusters with an intermediate number of flowers. These patterns do not conform to expectations based on optimal foraging theory and the ideal free distribution model. We attribute this discrepancy to incomplete information about the distribution of resources. Detailed observations and video recordings of individual honeybees also showed that the number of flowers had no effect on handling time of flowers by honeybees. We evaluate the implications of these patterns for insect foraging biology and plant reproduction.

## Introduction

Plants typically vary in the number of flowers they produce and individuals often cluster together at various spatial scales. Clustered spatial distribution of flowers has implications both for plant reproduction and food intake of flower-visiting insects [1, 2]. Pollinator responses towards clustering of flowers at various spatial scales have long been studied and the outcomes are highly diverse. However, behaviour of flower visitors in relation to the number of flowers on individual plants, as well as their foraging behaviour in larger clusters of multiple plant individuals can be understood in the context of selection for behaviours maximising the efficiency of resource acquisition [3, 4].

Behavioural responses of pollinators to resource clustering at different spatial scales in turn affect reproductive success of plants [5–7].

At the scale of individual plants, pollinators often prefer to visit plants with a larger number of flowers. These provide a higher total amount of rewards (nectar and pollen); moreover, they can be detected from a larger distance [8]. Despite that, the number of visitors usually increases less than proportionally with the number of flowers [9–18]. Although pollinators generally visit more flowers in larger inflorescences, they tend to visit a smaller proportion of available flowers [10, 12–15, 17–19]. This behaviour is consistent with classic predictions of the optimal foraging theory, which assumes that foragers feed in such a way as to maximise their rate of net energy intake [3, 4]. When foraging in patches, they should leave after the rate of energy intake drops below the average level provided by other patches [20]. Because insects have a limited ability to remember which flowers they have already visited, they start to revisit empty flowers after some time [21]. The risk of revisiting empty flowers increases with increasing number of flowers per inflorescence [17, 22]. As a result, visiting a decreasing proportion of flowers in larger inflorescences is an optimal foraging strategy [21].

Each individual flower can be thought of as a small patch of food [10], where extracting nectar may become more difficult as the nectar is depleted. This could prompt the bee to move to another flower earlier in rich habitats to maximise the amount of food extracted per unit time [20]. Many invertebrates [23–25] and vertebrates [26, 27] feeding on various food sources were observed to shorten their handling time and discard partially consumed food items when food was abundant. However, this behaviour was not observed in previous studies on bees and syrphid flies [9, 22]. This suggests that these flower visiting insects may handle individual flowers in a constant manner independently of flower abundance, but more data are needed before drawing firm conclusions.

From the plant’s perspective, higher per-flower visitation rate, which is a product of the number of visitors per plant and the number of flowers visited per visitor, should translate into higher reproductive output [28]. Per-flower visitation rate is usually independent of the number of flowers [14, 15, 17–19], although it can also increase [28] or decrease [12] with the number of flowers in different cases. Moreover, the link between visitation rate and seed set is not straightforward. Percentage seed set may increase with the number of flowers when visitation rate also increases [16, 28], but it may be reduced in self-incompatible species due to geitonogamous pollination which occurs when a single pollinator visits multiple flowers on the same plant [15, 29, 30].

Plants often grow in groups of multiple individuals, which we refer to as clusters. As in single plants, higher number of flowers in a cluster usually leads to a less than proportional increase in the number of visitors [10, 31–33], although proportional or higher increase was also reported [34]. Pollinators also tend to visit a decreasing proportion of flowers in larger clusters [10, 22, 31], and visitation rate per flower usually stays constant leading to an ideal free distribution of flower visitors [10, 17, 31, 33, 35]. At this spatial scale, optimal foraging theory is equally applicable for understanding flower visitor behaviour as in the case of plants with multiple flowers described above, and these patterns fit well to its predictions [10, 20–22]. However, the consequences for plant reproduction can be very nuanced. Percentage seed set was reported to be independent of cluster size [35], or increasing in response to higher visitation rate per flower in clusters with more flowers [34, 36]. However, seed set may also depend on the density of plants within the cluster [37], on their genetic compatibility [38], and on species-specific consequences of geitonogamous pollination whose frequency may vary with cluster size [30].

Here we report results of a field experiment we conducted to test how flower visitation and foraging behaviour of pollinators depend on the number of flowers at two spatial scales: single

plants and clusters of multiple plants. We conducted the experiment with potted *Dracocephalum moldavica* L. (Lamiaceae). Specifically, we tested how the number of flowers on a single plant or in a cluster affects the number of flower visitors per cluster and per flower. We then studied foraging behaviour of *Apis mellifera* in more detail to reveal how visit duration, number of flowers visited, and handling time per flower depends on the number of flowers. Our data show that the number of insects increased less than proportionally with the number of flowers and that honeybees visited a smaller proportion of flowers in larger clusters. Together, this led to maximal visitation rate per flower in clusters of intermediate size.

## Materials and Methods

*Dracocephalum moldavica* is a plant of the family Lamiaceae native to temperate zone of Asia; China, Russia, Tajikistan, and Turkmenistan. It is partly naturalised in a large part of Eurasia, introduced to the USA, and sometimes grown as an ornamental plant. It produces hermaphrodite flowers with violet colour which are oriented in whorls with 5-6 flowers in each whorl, have a semi-long corolla tube typical for Lamiaceae. Interactions with pollinators are not well known; a related species, *Dracocephalum ryushiana*, is pollinated probably mostly by bumblebees [39]. We saw the seeds in the beginning of May to germination trays in the greenhouse. Seedlings were transplanted individually to 1L pots containing a mixture of compost and sand (2:1) and grown in the greenhouse with regular watering and fertilisation. The plants fully flowered at the end of July with an average plant height of ca. 60 cm.

The first experiment (see below) was conducted in a meadow near Český Krumlov, 18 km southwest of České Budějovice (48.8434994N, 14.3333656E). The rest of the project was carried out in a meadow near the campus of the University of South Bohemia in České Budějovice (48.9750589N, 14.4358850E). All experiments were done on sunny days with no strong wind and no rain. No permits were required for this project.

## Experimental setup

The first experiment was designed to study pollinator visitation on single plants with different numbers of flowers (data in S1 Table). Potted single plants were placed in the meadow along a 35 m long transect. Eight plants were placed individually, 5 meters apart, along the transect at the same time. The number of flowers was adjusted by cutting selected flowers, which provided plants with the number of flowers ranging from 1 to 174. We sampled eight transects with different plant individuals, which resulted in a total of 64 observations. Observations were made for 30 minutes per plant. Two to three people were collecting data simultaneously, each observing a different plant. Sampling was conducted between 10:00 and 16:00 hours during three days between 4.-8.8.2016. Plants were replaced and the position of new plants was randomised after sampling each transect. Flower visitors were collected using an aspirator or a handnet, counted and preserved for identification.

The second experiment was aimed at studying visitation of clusters of multiple plants of different sizes (data in S2 Table). In this experiment, potted plants were placed to form five clusters 20 m apart from each other along two 40 m long transects. Each cluster contained a different number of plants varying from 1 to 37. We also counted the number of open flowers at each plant. The number of flowers in a cluster ranged between 42 to 2476. Each cluster was observed for 30 minutes during which all insects visiting *Dracocephalum* flowers in the cluster were

captured and preserved. We sampled seven transects on 16.8. and 17.8. 2016, which yielded in total 35 observations of cluster visitation. The numbers of flowers in each cluster were counted every day after finishing the experiments.

We also conducted detailed observations of foraging behaviour of *Apis mellifera* at the site of the second experiment (data in S3 Table). The total number of flower visitors in the experiments was dominated by *Apis mellifera*, which was thus selected for additional measurements. We measured the duration of visits, the number of flowers exploited, and handling time per flower of *A. mellifera* in clusters of different sizes. Potted plants were placed along two transects with 20 m distances. The number of plants per cluster ranged from 1 to 22, and the number of flowers was 2 to 643 per cluster. In this observation, a single *A. mellifera* was followed from its entry into the cluster until its last visit to a flower in the same cluster. Data collection included both the time spent in one cluster measured by a stopwatch and the number of flowers visited by each individual *A. mellifera*.

To test the hypothesis of partial consumption in honeybees, we measured the average number of flowers per minute over individual foraging bouts based on direct observations and then measured time spent on individual flowers using video recordings (data in S4 Table). We distinguished: i) total time from landing at a flower until leaving and ii) actual feeding time (head inserted deep inside the flower). We tested whether these two measures of handling time depended on the number of flowers in a cluster.

## Data analyses

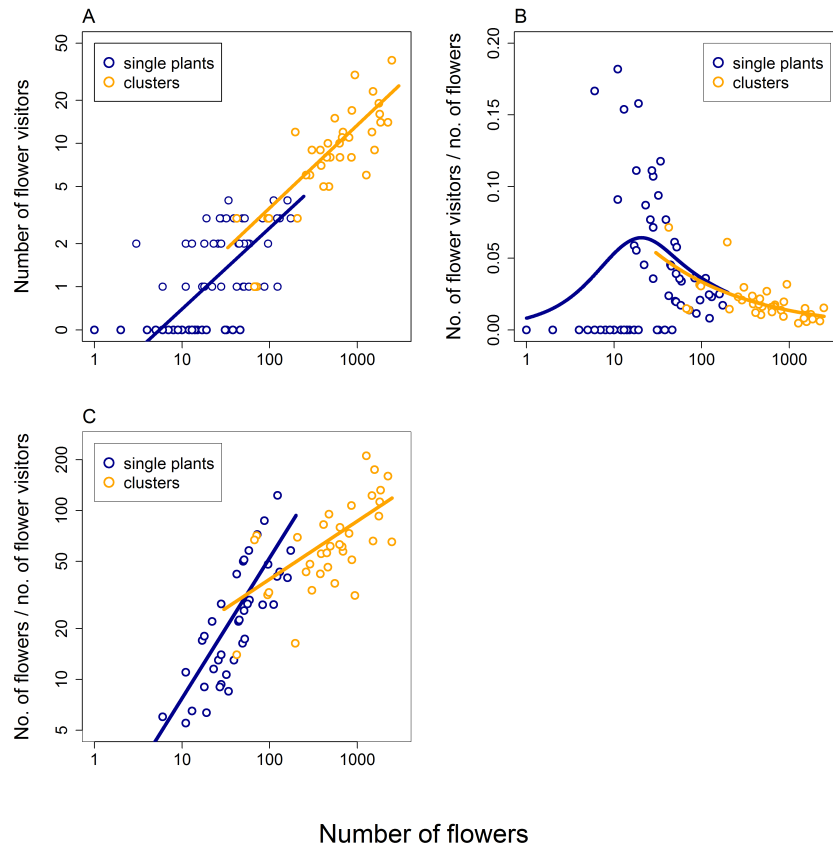
For the experiments on flower visitation, we conducted the analyses at the level of the total number of insect visitors per plant or per cluster. We tested how the number of flower visitors and other measures of visitation varied with the number of flowers using generalised linear models (GLM), or generalised additive models (GAM) implemented in a package mgcv 1.8-17 [40] when the relationship was nonlinear. Analyses were done in R 3.2.4 [41]. The number of flowers, used as an explanatory variable, was log-transformed before the analyses. We fitted the GLMs and GAMs using overdispersed Poisson distribution (quasipoisson) or Gamma distribution with log link function depending on the response variable. Analysis of proportion data was performed using Beta regression implemented in betareg package for R [42].

## Results

We found that the number of flower visitors increased with the increasing number of flowers on a plant or in a cluster, but less than proportionally (GLM, quasipoisson distribution,  $F_{1,62} = 31.5$ ,  $P < 10^{-6}$ ; Fig 1A, blue line and points). The relationship was linear at the log-log scale with a slope of 0.57 (SE=0.108). Data from larger clusters of multiple plants qualitatively showed an extension of the patterns observed in single plants. The number of insects increased with the increasing number of flowers ( $F_{1,33} = 45.6$ ,  $P < 10^{-6}$ ; Fig 1A, orange line and points) with a slope of 0.58 (SE=0.093) at the log-log scale.

Also, the ratio between the number of visitors and flowers increased when the number of flowers increased from one to around 20, but decreased when the number of flowers increased further (GAM, Gamma distribution, log link function,  $F = 3.2$ ,  $P = 0.0026$ ; Fig 1B, blue line and points). The log-linearly decreasing relationship in clusters of plants was an extension of the relationship reported in single plants ( $F = 26.1$ ,  $P = 1 \times 10^{-5}$ ; Fig 1B, orange lines and points).

We also calculated potential payoff for flower visitors defined as the mean number of flowers per

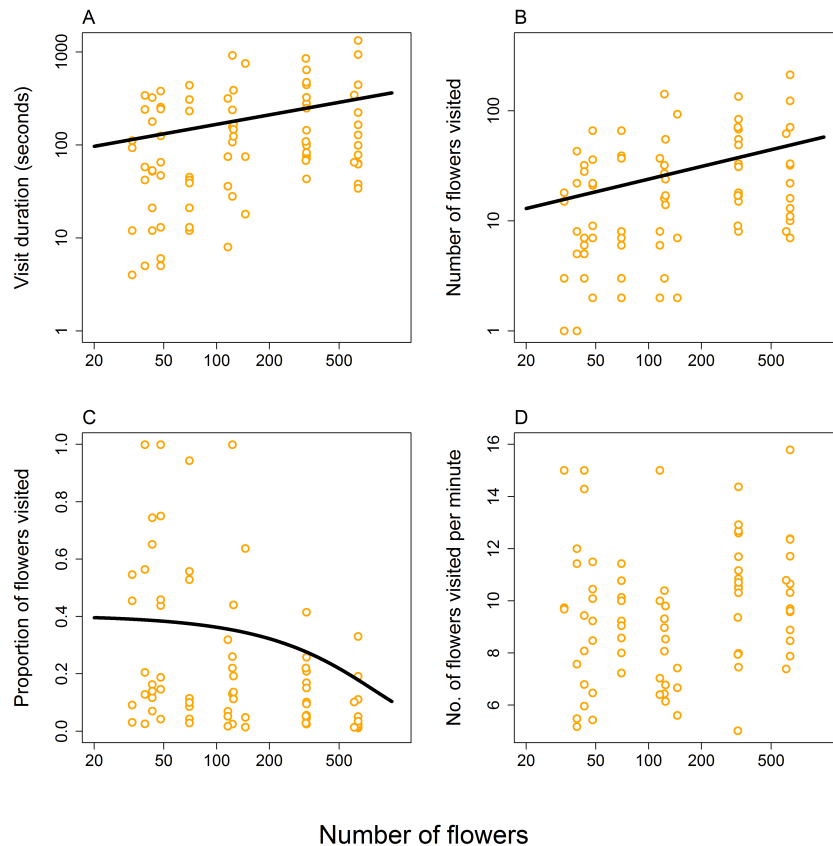


**Fig 1. The effects of the number of flowers in single plants and larger clusters on visitation by insects.** The plots combine data from two separately conducted experiments: one with single plants differing in the number of flowers (blue circles and fitted lines) and another with larger clusters of up to 36 plants (orange circles and fitted lines). Data from these two experiments were combined for the purpose of visualisation, but were analysed separately. A: The number of flower visitors observed during 30-minute observation periods on single plants and larger clusters varying in the number of flowers. B: The number of insects visiting the plants or clusters of multiple plants relative to the number of flowers available. C: The number of flowers available per visitor; i.e. the potential pay-off for the flower visitors.

visitor, assuming that already visited flowers did not renew their nectar reward during the observation time (30 minutes). The potential payoff increased with the increasing number of flowers on both single plants (GLM, Gamma distribution, log link function,  $F_{1,39} = 67.5$ ,  $P < 10^{-6}$ ; Fig 1C, blue line and points) and clusters of plants ( $F_{1,33} = 21.0$ ,  $P = 6 \times 10^{-5}$ ; Fig 1C, orange line and points), although with a shallower slope in the latter case; slope was 0.83 in single plants (SE=0.096) and 0.34 in clusters of plants (SE=0.076). This means that there were more free resources available for each visitor in larger clusters.

Detailed observations of foraging behaviour of individually tracked honeybees showed that, as expected, individual honeybees spent more time foraging in larger clusters (GLM, Gamma distribution, log link function,  $F_{1,80} = 8.5$ ,  $P = 0.0045$ ; Fig 2A) and visited more flowers there (GLM, quasipoisson distribution,  $F_{1,80} = 11.3$ ,  $P = 0.0012$ ; Fig 2B). However, the increase was only modest in both cases; significantly less than proportional. The slope was 0.34 (SE=0.114) for time and 0.38 (SE=0.117) for the number of flowers visited. There was also considerable variation

around the fitted relationships. The proportion of available flowers visited by individual honeybees 152  
decreased significantly with the increasing number of flowers per cluster (Beta regression,  $\chi^2 = 8.9$ , 153  
 $P = 0.0029$ ; Fig 2C). In large clusters, all individuals visited only a minority of flowers, while in 154  
small clusters, the proportion of flowers visited varied widely from just a few to all flowers available 155  
(Fig 2C). Honeybees foraged with the same speed across the range of cluster sizes; i.e. the number 156  
of flowers visited per minute did not depend on the number of flowers available (GLM, Gamma 157  
distribution, log link function,  $F_{1,80} = 7.40$ ,  $P = 0.0081$ , Fig 2D). 158

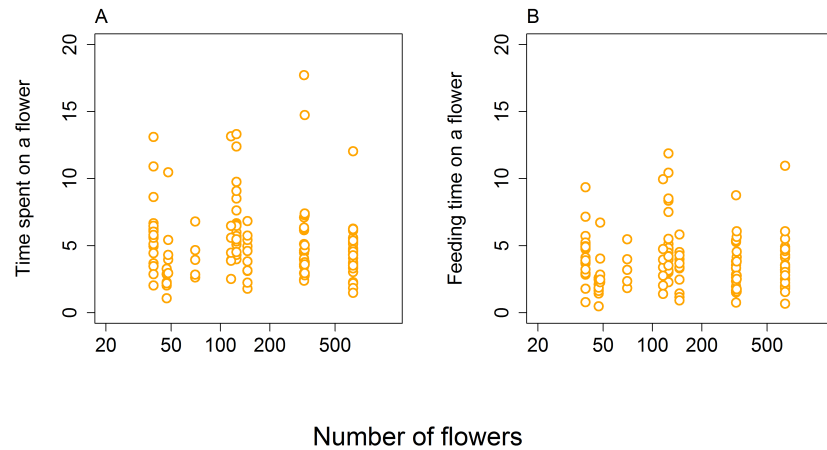


**Fig 2. Foraging behaviour of honeybees in response to the number of flowers in clusters of multiple plants.** A: The time spent foraging within the cluster by individual honeybees increased with the number of flowers available. B: The number of flowers visited increased with the total number of flowers available. C: The proportion of flowers visited by individual bees decreased with the number of flowers available. D: The number of flowers exploited per minute did not show any significant relationship to the number of flowers available.

Neither of our two measures of handling time per flower depended on the number of flowers in a 159  
cluster (Fig 3). Feeding time per flower, defined as the time a bee spent with its head deep inside a 160  
flower, apparently engaged in nectar extraction, did not depend on the number of flowers in a 161  
cluster (GLM, Gamma distribution, log link function,  $F_{1,132} = 0.75$ ,  $P = 0.3869$ ; Fig 3A). Also the 162  
total time spend on the flower from first contact until take-off was independent of the number of 163  
flowers (GLM, Gamma distribution, log link function,  $F_{1,132} = 0.95$ ,  $P = 0.3308$ ; Fig 3B). 164  
Compared to data shown in Fig 2D, these measurements exclude travelling time between flowers 165

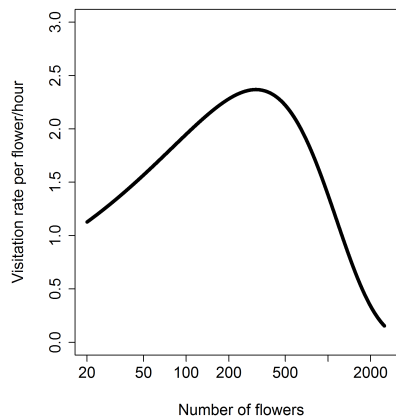


and estimate only the time spent handling the flowers and the actual duration of feeding per flower. 166



**Fig 3. Honeybees' handling time per flower was independent of the number of flowers in clusters of different sizes.** A: Total time spent on a flower measured from video recordings as the time from the first contact until take-off. B: Feeding time estimated as a time honeybees spent with their head deep inside the flower. Both are measures of handling time excluding movement between flowers.

Finally, we calculated visitation rate per flower and unit time by multiplying the estimated 167  
dependence of the number of honeybees on the number of flowers (GLM, quassipoison distribution, 168  
 $F_{1,33} = 10.009$ ,  $P = 0.0034$ , slope=0.40, SE=0.1313) and the dependence of the proportion of 169  
flowers visited on the number of flowers per cluster (Fig 2C). The estimated visitation rate showed a 170  
unimodal relationship peaking at the intermediate level of the number of flowers per cluster (Fig 4). 171



**Fig 4. Flower visitation rate peaks at the intermediate number of flowers.** Visitation rate per flower per hour was estimated as a product of the number of visitors (honeybees only) and the proportion of flowers visited by an individual honeybee.

## Discussion

172

### Foraging behaviour of flower-visitors

173

We observed that single plants with many flowers and large clusters were generally more attractive to flower-visiting insects than those with a smaller number of flowers. This is a classic pattern expected for optimally foraging animals who maximise net energy intake per unit time. However, our data show several departures from simple theoretical expectations.

174  
175  
176  
177

The number of flower visitors increased with the increasing number of flowers, but less than proportionally (Fig 1A). Optimally foraging animals should reach *ideal free distribution* (IFD) where they would possibly ignore very poor patches altogether, and they would be distributed between the rest of the patches in such a way as to equalise patch payoff [10,43]. In the case of flower visitors, this leads to flower visitation rate independent of the number of flowers per plant or cluster [10]. However, our data show that plants with many flowers and large clusters were underutilised. The number of insects per flower decreased sharply in single plants with many flowers and in large clusters (Fig 1B), and the number of flowers available per visitor increased (Fig 1C). Detailed observations of foraging honeybees, the most numerous flower visitor species, showed that flower visitation rate peaked in clusters of plants with an intermediate number of flowers and dropped in clusters with both few flowers and many flowers (Fig 4). This observation contrasts strongly with the constant flower visitation rate predicted by optimal foraging theory [10] and observed in previous studies. Several studies reported that less than proportional increase in the number of visitors with the number of flowers was compensated by an increasing number of flowers visited per individual. This led to a constant flower visitation rate [10,17,31,33,35]. However, in our case, these relationships had such shapes that they combined to form a unimodal pattern with the highest flower visitation rate in clusters with an intermediate number of flowers (Fig 4). This represents suboptimal foraging behaviour.

178  
179  
180  
181  
182  
183  
184  
185  
186  
187  
188  
189  
190  
191  
192  
193  
194  
195

The lack of flower-visitors on plants with few flowers is consistent with expectations based on optimal foraging theory [20] and the IFD model [43]. It is generally not profitable to use poor resources, i.e. plants with few flowers, unless resources are very scarce [43]. Honeybees are known to adjust their selectivity for clusters of flowers based on the overall abundance of resources, so they avoid poor resources when food is plentiful [44]. However, an alternative explanation is that this is not due to choice on the part of insects but due to low detection probability of plants or clusters with few flowers. Detectability of an object increases with the visual angle subtended by the stimulus, which means that bees and other animals can see large flowers or inflorescences easier and from a larger distance [8,45,46]. Unfortunately, our data do not allow us to decide whether plants with few flowers were not detected or ignored; these possibilities are also not mutually exclusive.

196  
197  
198  
199  
200  
201  
202  
203  
204  
205

Underutilisation of plants and clusters with a high number of flowers could be explained by a limited amount of information insects had about the quantity and spatial distribution of resources, because we placed the plants at the meadow only shortly before we started our observations [47–50]. Classic models of optimal foraging theory [20] and IFD [43] assume that foragers are omniscient, i.e. that they know the quality of all individual patches of food. This is rarely if ever the case in reality, so animals must make foraging decisions with imperfect information [47–49,51]. They are generally thought to use information about the quality of previously visited clusters together with their perception of the quality of a new cluster to decide whether to enter the cluster or go elsewhere [47,49]. This may provide explanation for our observation of underutilisation of the richest clusters. The meadow where the experiment was conducted had fairly low abundance of flowers, so any cluster of *Dracocephalum* with the number of flowers higher than a certain value

206  
207  
208  
209  
210  
211  
212  
213  
214  
215  
216



would provide a richer source of food than the background the bees were familiar with. This means that without having enough time to properly explore the landscape modified by addition of our experimental clusters of potted plants and learning the location of the richest clusters [52], the bees did not have enough information to forage optimally. Our data thus support previous observations that foragers are usually overrepresented in poor clusters and underrepresented in rich clusters, leading to suboptimal food intake [47].

At the within-cluster scale, we observed that individual honeybees spent more time and visited more flowers in larger clusters, but they visited a smaller proportion of the available flowers (Fig 2). This pattern has already attracted considerable attention because it seems to be at odds with optimal foraging behaviour [10, 22, 31, 53]. However, due to larger numbers of insects visiting larger clusters of flowers, visiting a smaller proportion of flowers leads to an IFD and thus to an optimal use of resources [10]. For example, Goulson [22] performed experiments which showed that as the insect visits flowers in a large patch it becomes difficult to avoid revisiting already emptied flowers, so at some point it becomes advantageous to leave the patch rather than search for the remaining unvisited flowers because food intake rate is depressed [20]. Another aspect of foraging biology we studied was handling time per flower. None of the measures we used varied with the number of flowers per cluster (Fig 2D and Fig 3), so it appears that bees did not adjust the way they used individual flowers depending on the number of flowers in a cluster. However, our negative result is in line with several previous studies on various bees and syrphid flies [9, 22], so these flower visiting insects apparently handle individual flowers in a constant manner independently of flower abundance.

## Implications for plant reproduction

Our observations of flower visitation and foraging behaviour suggest that the number of flowers on individual plants and in clusters of plants could affect plant reproductive success. Specifically, there was a lower number of insects per flower on plants with more flowers and in larger clusters (Fig 1) and per-flower visitation rate based on data on honeybees peaked in clusters with an intermediate number of flowers (Fig 4). Variation in flower visitation rate should lead to differences in pollination and consequently percentage seed set of plants depending on the number of flowers per plant or per cluster. However, previous studies show that the link between visitation and seed set in plants is often weak and not at all straightforward [32, 54].

Implications of the number of flowers for reproductive success clearly depend on the specifics of the plant's mating system, especially whether they are self-compatible or not. Plants with many flowers may have a large incidence of geitonogamous self-pollination caused by pollinators visiting many flowers at the same plant. In this case, only the first few flowers receive significant amounts of pollen brought from a different plant, while the following flowers receive pollen from previous flowers visited on the same plant. For example, *Bombus terrestris* foraging on *Brassica napus* deposited the pollen it collected from one flower on the first four flowers visited afterwards [55, 56]. In self-incompatible species, geitonogamous self-pollination can reduce fitness because of stigma clogging, interference with the germination of outcross pollen grains, or reducing availability of receptive ovules [57–59]. Honeybees visited usually tens of flowers in larger clusters in our experiment; most of the pollen transport thus probably occurred between flowers of the same plant. We do not know the consequences of geitonogamous pollination or genetic relatedness of plants in a cluster [30, 60, 61] for seed set in *D. moldavica*, so it would not be wise to speculate about the implications of our visitation data for its reproduction. As previous research shows, the relationship between flower visitation and seed set is complex. More detailed data would thus be needed to

address this question properly. 262

## Conclusions 263

Our results show that flower-visiting insects preferred plants and clusters of multiple plants with 264  
larger numbers of flowers. However, visitation rate per flower and unit time peaked in clusters with 265  
an intermediate number of flowers in violation of ideal free distribution expected for optimally 266  
foraging animals. We consider limited opportunity to learn the location of rich clusters to be a 267  
likely explanation of this pattern. Detailed observations of foraging honeybees showed that they 268  
visited more flowers, but a smaller proportion of flowers in larger clusters. Although handling time 269  
per flower was highly variable, it was unrelated to the number of flowers per cluster. Bees were thus 270  
not flexible in handling flowers depending on their local abundance. 271

## Supporting information 272

**S1 Table. Data from the first experiment on flower visitation of individual plants 273  
with a variable number of flowers. 274**

**S2 Table. Data from the second experiment on flower visitation of clusters of 275  
multiple plants. 276**

**S3 Table. Detailed data on foraging behaviour of honeybees. 277**

**S4 Table. Data on honeybee handling time per flower: feeding time and total time 278  
spent per flower. 279**

## Acknowledgements 280

We would like to thank Pavla Dudová for help with field observations. This project was supported 281  
by the Czech Science Foundation (project GP14-10035P). AA and PB were also supported by a 282  
grant GA JU 152/2016/P provided by the University of South Bohemia. 283

## References

1. Zimmerman M. Reproduction in *Polemonium*: competition for pollinators. *Ecology*. 1980;61(3):497–501.
2. Jennersten O, Nilsson SG. Insect flower visitation frequency and seed production in relation to patch size of *Viscaria vulgaris* (Caryophyllaceae). *Oikos*. 1993; p. 283–292.
3. Emlen JM. The role of time and energy in food preference. *The American Naturalist*. 1966;100(916):611–617.
4. MacArthur RH, Pianka ER. On optimal use of a patchy environment. *The American Naturalist*. 1966;100(916):603–609.

5. Hegland SJ. Floral neighbourhood effects on pollination success in red clover are scale-dependent. *Functional Ecology*. 2014;28(3):561–568.
6. Jha S, Vandermeer JH. Contrasting bee foraging in response to resource scale and local habitat management. *Oikos*. 2009;118(8):1174–1180.
7. Schmid B, Nottbrock H, Esler K, Pagel J, Pauw A, Böhning-Gaese K, et al. Responses of nectar-feeding birds to floral resources at multiple spatial scales. *Ecography*. 2016;39:619–629.
8. Giurfa M, Vorobyev M, Kevan P, Menzel R. Detection of coloured stimuli by honeybees: minimum visual angles and receptor specific contrasts. *Journal of Comparative Physiology A*. 1996;178(5):699–709.
9. Conner JK, Rush S. Effects of flower size and number on pollinator visitation to wild radish, *Raphanus raphanistrum*. *Oecologia*. 1996;105(4):509–516.
10. Dreisig H. Ideal free distributions of nectar foraging bumblebees. *Oikos*. 1995; p. 161–172.
11. Danderson CA, Molano-Flores B. Effects of herbivory and inflorescence size on insect visitation to *Eryngium yuccifolium* (Apiaceae) a prairie plant. *The American Midland Naturalist*. 2010;163(1):234–246.
12. Grindeland JM, Sletvold N, Ims RA. Effects of floral display size and plant density on pollinator visitation rate in a natural population of *Digitalis purpurea*. *Functional Ecology*. 2005;19(3):383–390.
13. Brunet J, Thairu MW, Henss JM, Link RI, Kluever JA, Diggle PK. The effects of flower, floral display, and reward sizes on bumblebee foraging behavior when pollen is the reward and plants are dichogamous. *International Journal of Plant Sciences*. 2015;176(9):811–819.
14. Goulson D, Stout JC, Hawson SA, Allen JA. Floral display size in comfrey, *Symphytum officinale* L.(Boraginaceae): relationships with visitation by three bumblebee species and subsequent seed set. *Oecologia*. 1998;113(4):502–508.
15. Mitchell R, Karron J, Holmquist K, Bell J. The influence of *Mimulus ringens* floral display size on pollinator visitation patterns. *Functional Ecology*. 2004;18(1):116–124.
16. Ohara M, Higashi S. Effects of inflorescence size on visits from pollinators and seed set of *Corydalis ambigua* (Papaveraceae). *Oecologia*. 1994;98(1):25–30.
17. Ohashi K, Yahara T. Visit larger displays but probe proportionally fewer flowers: counterintuitive behaviour of nectar-collecting bumble bees achieves an ideal free distribution. *Functional Ecology*. 2002;16(4):492–503.
18. Vaughton G, Ramsey M. Floral display, pollinator visitation and reproductive success in the dioecious perennial herb *Wurmbea dioica* (Liliaceae). *Oecologia*. 1998;115(1-2):93–101.
19. Ohashi K, Yahara T. Effects of variation in flower number on pollinator visits in *Cirsium purpuratum* (Asteraceae). *American Journal of Botany*. 1998;85(2):219–219.
20. Charnov EL. Optimal foraging, the marginal value theorem. *Theoretical Population Biology*. 1976;9(2):129–136.

21. Pyke GH. Optimal foraging: movement patterns of bumblebees between inflorescences. *Theoretical Population Biology*. 1978;13(1):72–98.
22. Goulson D. Why do pollinators visit proportionally fewer flowers in large patches? *Oikos*. 2000;91(3):485–492.
23. Hassell M, Lawton J, Beddington J. The components of arthropod predation: I. The prey death-rate. *Journal of Animal Ecology*. 1976; p. 135–164.
24. Giller PS. The control of handling time and its effects on the foraging strategy of a heteropteran predator, *Notonecta*. *Journal of Animal Ecology*. 1980; p. 699–712.
25. Lucas JR. Partial prey consumption by antlion larvae. *Animal Behaviour*. 1985;33(3):945–958.
26. Astrom M, Lundberg P, Danell K. Partial prey consumption by browsers: trees as patches. *Journal of Animal Ecology*. 1990; p. 287–300.
27. Gende S, Quinn T, Willson M. Consumption choice by bears feeding on salmon. *Oecologia*. 2001;127(3):372–382.
28. Andersson S. Floral display and pollination success in *Achillea ptarmica* (Asteraceae). *Ecography*. 1991;14(3):186–191.
29. de Jong TJ, Waser NM, Price MV, Ring RM. Plant size, geitonogamy and seed set in *Ipomopsis aggregata*. *Oecologia*. 1992;89(3):310–315.
30. Ruane LG, Rotzin AT, Congleton PH. Floral display size, conspecific density and florivory affect fruit set in natural populations of *Phlox hirsuta*, an endangered species. *Annals of Botany*. 2014;113(5):887–893.
31. Ishihama F, Washitani I. Behavior of queen bumblebee pollinators on *Primula sieboldii* (Primulaceae) in response to different patch sizes and spacing. *Plant Species Biology*. 2007;22(3):167–174.
32. Krushelnycky PD. Evaluating the interacting influences of pollination, seed predation, invasive species and isolation on reproductive success in a threatened alpine plant. *PLOS ONE*. 2014;9(2):e88948.
33. Garbuzov M, Madsen A, Ratnieks FL. Patch size has no effect on insect visitation rate per unit area in garden-scale flower patches. *Acta Oecologica*. 2015;62:53–57.
34. Blaauw BR, Isaacs R. Larger patches of diverse floral resources increase insect pollinator density, diversity, and their pollination of native wildflowers. *Basic and Applied Ecology*. 2014;15(8):701–711.
35. Kunin WE. Population size and density effects in pollination: pollinator foraging and plant reproductive success in experimental arrays of *Brassica kaber*. *Journal of Ecology*. 1997; p. 225–234.
36. Anic V, Henríquez C, Abades S, Bustamante R. Number of conspecifics and reproduction in the invasive plant *Eschscholzia californica* (Papaveraceae): is there a pollinator-mediated Allee effect? *Plant Biology*. 2015;17(3):720–727.

37. Hegland SJ, Boeke L. Relationships between the density and diversity of floral resources and flower visitor activity in a temperate grassland community. *Ecological Entomology*. 2006;31(5):532–538.
38. García-Meneses PM, Ramsay PM. Pollinator response to within-patch spatial context determines reproductive output of a giant rosette plant. *Basic and Applied Ecology*. 2012;13(6):516–523.
39. Milberg P, Bertilsson A. What determines seed set in *Dracocephalum ryuschiana* L. an endangered grassland plant? *Flora*. 1997;192(4):361–367.
40. Wood S. Generalized additive models: an introduction with R. CRC press; 2006.
41. R Core Team. R: A Language and Environment for Statistical Computing; 2013. Available from: <http://www.R-project.org/>.
42. Cribari-Neto F, Zeileis A. Beta regression in R. *Journal of Statistical Software*. 2009;34(2):1–24.
43. Fretwell SD, Calver JS. On territorial behavior and other factors influencing habitat distribution in birds. *Acta Biotheoretica*. 1969;19(1):37–44.
44. Seeley TD. Social foraging by honeybees: how colonies allocate foragers among patches of flowers. *Behavioral Ecology and Sociobiology*. 1986;19(5):343–354.
45. Spaethe J, Tautz J, Chittka L. Visual constraints in foraging bumblebees: flower size and color affect search time and flight behavior. *Proceedings of the National Academy of Sciences*. 2001;98(7):3898–3903.
46. Giurfa M, Lehrer M. Honeybee vision and floral displays: from detection to close-up recognition. In: Chittka L, Thomson JD, editors. *Cognitive ecology of pollination*. Cambridge, UK: Cambridge University Press; 2001. p. 61–82.
47. Abrahams MV. Patch choice under perceptual constraints: a cause for departures from an ideal free distribution. *Behavioral Ecology and Sociobiology*. 1986;19(6):409–415.
48. Stephens DW. Learning and behavioral ecology: incomplete information and environmental predictability. In: Papaj D, Lewis A, editors. *Insect Learning*. Chapman & Hall, New York; 1993. p. 195–218.
49. Olsson O, S Brown J. The foraging benefits of information and the penalty of ignorance. *Oikos*. 2006;112(2):260–273.
50. Eliassen S, Jørgensen C, Mangel M, Giske J. Exploration or exploitation: life expectancy changes the value of learning in foraging strategies. *Oikos*. 2007;116(3):513–523.
51. Bernstein C, Kacelnik A, Krebs JR. Individual decisions and the distribution of predators in a patchy environment. *Journal of Animal Ecology*. 1988; p. 1007–1026.
52. Thomson JD. Effects of variation in inflorescence size and floral rewards on the visitation rates of traplining pollinators of *Aralia hispida*. *Evolutionary Ecology*. 1988;2(1):65–76.

53. Schmitt J. Flowering plant density and pollinator visitation in *Senecio*. *Oecologia*. 1983;60(1):97–102.
54. Brody AK, Mitchell RJ. Effects of experimental manipulation of inflorescence size on pollination and pre-dispersal seed predation in the hummingbird-pollinated plant *Ipomopsis aggregata*. *Oecologia*. 1997;110(1):86–93.
55. Cresswell JE. A method for quantifying the gene flow that results from a single bumblebee visit using transgenic oilseed rape, *Brassica napus* L. cv. Westar. *Transgenic Research*. 1994;3(2):134–137.
56. Cresswell J, Bassom A, Bell S, Collins S, Kelly T. Predicted pollen dispersal by honey-bees and three species of bumble-bees foraging on oil-seed rape: a comparison of three models. *Functional Ecology*. 1995; p. 829–841.
57. Ockendon D, Currah L. Self-pollen reduces the number of cross-pollen tubes in the styles of *Brassica oleracea* L. *New Phytologist*. 1977;78(3):675–680.
58. Waser NM, Price MV. Reproductive costs of self-pollination in *Ipomopsis aggregata* (Polemoniaceae): are ovules usurped. *American Journal of Botany*. 1991; p. 1036–1043.
59. Sage TL, Price MV, Waser NM. Self-sterility in *Ipomopsis aggregata* (Polemoniaceae) is due to prezygotic ovule degeneration. *American Journal of Botany*. 2006;93(2):254–262.
60. Levin DA. Proximity-dependent cross-compatibility in *Phlox*. *Evolution*. 1989;43(5):1114–1116.
61. Souto CP, Aizen MA, Premoli AC. Effects of crossing distance and genetic relatedness on pollen performance in *Alstroemeria aurea* (Alstroemeriaceae). *American Journal of Botany*. 2002;89(3):427–432.