

1 **Profiling of lysine-acetylated proteins in human urine**

2 Weiwei Qin, Zhenhuan Du, He Huang, Youhe Gao^{*}

3 Department of Biochemistry and Molecular Biology, Beijing Normal University,
4 Beijing, 100875, China

5 ^{*}Corresponding author:

6 Youhe Gao

7 Address: Department of Biochemistry and Molecular Biology, Beijing Normal University, Gene
8 Engineering and Biotechnology Beijing Key Laboratory, Beijing, 100875, P. R. of China

9 Email address: gaoyouhe@bnu.edu.cn

10 Tel. and Fax: +86 10 58804382

11

1 **Abstract.**

2 Biomarker is the measurable change associated with a physiological or
3 pathophysiological process, its nature is change. Contrast to the blood which is under
4 homeostatic controls, urine reflects changes in the body earlier and more sensitive
5 therefore is a better biomarker source. Lysine acetylation is an abundant and highly
6 regulated post-translational modification. It plays a pivotal role in modulating diverse
7 biological processes and is associated with various important diseases. Enrichment or
8 visualization of proteins with specific post-translational modifications provides a
9 method for sampling the urinary proteome and reducing sample complexity. In this
10 study, we used anti-acetyllysine antibody-based immunoaffinity enrichment combined
11 with high-resolution mass spectrometry to profile lysine-acetylated proteins in normal
12 human urine. A total of 629 acetylation sites on 315 proteins were identified,
13 including some very low-abundance proteins. This is the first proteome-wide
14 characterization of lysine acetylation proteins in normal human urine. Our dataset
15 provides a useful resource for the further discovery of the lysine acetylated proteins as
16 biomarker in urine.

17 **Keywords:** Urine, Post-translational modification, Lysine acetylation

18

19

1 **1 Introduction**

2 Biomarker is the measurable change associated with a physiological or
3 pathophysiological process, its nature is change(1). In contrast to the blood, which is
4 controlled by homeostatic mechanisms, urine as waste in the body accumulates
5 changes. We suggest it is more sensitive to detect changes in the urine may be more
6 sensitive than in the plasma (1, 2). In addition, urine can be easily and non-invasively
7 collected in large quantities and does not undergo significant proteolytic degradation
8 compared to other biofluids (3). We established a urimem that adsorbs biological
9 molecules in the urine onto a membrane (4, 5). This method makes it possible to store
10 and archive urine samples economically on a large scale for long-term preservation.
11 Urine may become very important for large-scale biomarker research.
12 Post-translational modifications (PTMs) are covalent modifications of a protein (6)
13 and play a vital role in modulating several biological functions. In the past decade, the
14 evolution of mass spectrometry-based proteomic methods including enrichment
15 strategies has enabled wide-scale identification of PTMs, such as acetylation (7),
16 glycosylation (8), and phosphorylation (9). Lysine acetylation (Kac), a dynamic and
17 reversible PTM, was initially discovered in histones approximately 50 years ago (10).
18 Subsequent studies were focused on chromatin remodeling for gene transcription,
19 until the first non-histone protein, p53, was identified to be lysine-acetylated (11). In
20 2006, Kim et al. reported the first systematic analysis of lysine-acetylated proteins,
21 indicating that Kac is involved in the regulation of diverse cellular pathways beyond
22 DNA-templated processes. Subsequent studies detected abundant Kac in non-histone

1 proteins in eukaryotes (such as in human, mouse, and *Drosophila*) (7, 12) and
2 prokaryotes (such as *Escherichia coli*, *Salmonella enterica*) (13, 14).
3 Lysine-acetylated proteins are involved in nearly all cellular processes and are
4 evolutionarily conserved from bacteria to mammals. These proteins are also
5 associated with important diseases such as metabolic diseases, neurodegenerative
6 disorders, and cardiovascular diseases(15-17).

7 In urine, only glycosylation and phosphorylation have been studied and applied in
8 biomarker research(8, 18). Compared to more than 400 forms of PTMs detected in
9 proteins(19), little is known about the PTMs of urine proteins. In this study, we used
10 immune-affinity-based acetyllysine peptide enrichment integrated with
11 high-resolution mass spectrometry to profile lysine-acetylated proteins in normal
12 human urine.

13 **2 Materials and methods**

14 **2. 1. Ethical statement**

15 The consent procedure and the study protocol were approved by the Institutional
16 Review Board of the Institute of Basic Medical Sciences, Chinese Academy of
17 Medical Sciences. (Project No. 007–2014). Written informed consent was obtained
18 from each subject prior to the study.

19 **2. 2. Urine sample preparation**

20 The first morning mid-stream urine was collected from 16 donors (8 males and 8
21 females), aged 24–40 years (average 30 and 27 years for males and females,
22 respectively), routine medical examinations were normal, and females who were in

1 menses were excluded. Next, 20 ml urine samples were filtered through a
2 nitrocellulose membrane, urinary proteins were adsorbed onto the membrane, and the
3 membrane was dried and stored in a vacuum bag as described previously (4). Urinary
4 proteins were eluted from the membrane by vortexing, followed by quantification by
5 the Bradford method for western blot analysis.

6 800 ml pooled urine samples (3 males and 3 females, aged 24–30 years) were
7 centrifuged at 3500 $\times g$ for 30 min. After discarding the debris, the supernatant was
8 centrifuged at 12,000 $\times g$ for 30 min. After the removal of precipitates, urinary
9 proteins were fractionated by acetone and re-dissolved in lysis buffer (7 M urea, 2 M
10 thiourea, 120 mM dithiothreitol, and 40 mM Tris), and then quantified by the
11 Bradford method for immune-affinity enrichment and LC-MS/MS analysis.

12 **2. 3. Western blot analysis**

13 Urinary proteins from each sample (30 μg , n = 16) were loaded on 12% SDS-PAGE
14 and transferred to a polyvinylidene difluoride (PVDF) membrane. After blocking in
15 TBST buffer (1X TBS containing 0. 1% Tween 20) with 5% (w/v) nonfat milk for 40
16 min at room temperature, the membranes were incubated with diluted primary
17 antibodies (dilution 1:1000) (PTM Biolabs, Chicago, IL, USA) at 4°C with gentle
18 shaking overnight. Next, the membrane was probed with secondary antibodies
19 (dilution 1:5000) coupled to horseradish peroxidase. Signals were revealed by
20 enhanced chemiluminescence, and the results were scanned and analyzed using an
21 Image Quant 400TM Imager (GE Healthcare, Little Chalfont, UK). Finally, the
22 membrane was stained with Coomassie Brilliant Blue.

1 **2. 4. Protein digestion**

2 5 mg urinary proteins were used for digestion, the protein solution was reduced with
3 10 mM DTT for 1 h at 37°C and alkylated with 20 mM IAA for 45 min at room
4 temperature in the dark. For trypsin digestion, the protein sample was diluted by
5 adding 100 mM ammonium bicarbonate to make the urea concentration less than 2 M.
6 Finally, trypsin was added at a 1:50 trypsin-to-protein mass ratio for the first digestion
7 overnight and 1:100 trypsin-to-protein mass ratio for the second 4-h digestion.

8 **2. 5. Off-line high-pH HPLC separation**

9 2 mg tryptic peptides was then fractionated by high pH reverse-phase HPLC using
10 Agilent 300Extend C18 column (5 µm particles, 4.6 mm ID, 250 mm length, Santa
11 Clara, CA, USA). Briefly, peptides were first separated over a gradient of 2–60%
12 acetonitrile in 10 mM ammonium bicarbonate, pH 10.0 for 80 min into 80 fractions.
13 Next, the peptides were combined into 7 fractions and dried by vacuum
14 centrifugation.

15 **2. 6. Enrichment of lysine-acetylated peptides**

16 To enrich Kac peptides, tryptic peptides dissolved in NETN buffer (100 mM NaCl, 1
17 mM EDTA, 50 mM Tris-HCl, 0.5% NP-40, pH 8.0) were incubated with pre-washed
18 antibody beads (PTM Biolabs) at 4°C overnight with gentle shaking. The beads were
19 washed four times with NETN buffer and twice with ddH₂O. The bound peptides
20 were eluted from the beads with 0.1% TFA. The eluted fractions were combined and
21 vacuum-dried. The resulting peptides were cleaned with C18 ZipTips (Millipore,
22 Billerica, MA, USA) according to the manufacturer's instructions, followed by

1 LC-MS/MS analysis.

2 **2. 7. LC-MS/MS analysis**

3 The lyophilized peptides were re-suspended in 0.1% formic acid and subjected to
4 chromatography using an EASY-nLC 1000 UPLC system (Thermo Scientific,
5 Waltham, MA, USA). The peptides were separated on a reversed-phase analytical
6 column (Acclaim PepMap RSLC, Thermo Scientific). Elution was performed over a
7 gradient of 7–35% buffer B (0.1% formic acid in 98% ACN; flow rate, 0.3 μ L/min)
8 for 40 min. A Q ExactiveTM Plus mass spectrometer (Thermo Scientific) was used to
9 analyze the fractions. The MS data were acquired using the high-sensitivity mode
10 with the following parameters: 20 data-dependent MS/MS scans per full scan, full
11 scans acquired at a resolution of 70,000 and MS/MS scans at a resolution of 17,500,
12 dynamic exclusion (exclusion duration 30 s), MS scans over a range of 350–1800
13 m/z.

14 **2. 8. Data processing**

15 The MS raw data were processed using the PEAKS Studio (version 7.5,
16 Bioinformatics Solution Inc., Waterloo, Canada). High-quality de novo sequence tags
17 were then used by PEAKS DB(20) to search the human proteome database
18 (UniProtKB/Swiss-Prot release 2014-01-10). The fasta file contained 20120 protein
19 sequences. A mass tolerance of 10 ppm and 0.02 Da was set for the precursor ions and
20 fragment ions, respectively. Cysteine carbamidomethylation was set as fixed
21 modification, oxidation (M), protein N-terminal and lysine acetylation as variable
22 modifications. Trypsin allowing 3 missed cleavages was chosen as the enzyme. A

1 decoy database was also searched to calculate the false-discovery rate (FDR) using
2 the decoy-fusion method. Result filtration parameters: peptide-spectrum matches FDR
3 < 0.1 %; Peptide $-10 \lg P \geq 27.5$ (FDR 0.2%); Protein $-10 \lg P \geq 28$ (FDR 0.0%), and
4 proteins unique peptides ≥ 1 ; AScore ≥ 59 considers as confident Kac site.

5 **2. 9. Motif and secondary structure analysis**

6 Software motif-x was used to analyze the model of sequences with amino acids in
7 specific positions of acetylated lysine-13-mers (6 amino acids upstream and
8 downstream of the acetylation site) in all protein sequences (21). The IPI human
9 proteome was used as an extension database, while other parameters were set to
10 default values. The local secondary structures of lysine-acetylated proteins were
11 predicted by NetSurfP (22).

12 **2. 10. Protein networks and functional analysis**

13 All identified lysine-acetylated urinary proteins were subjected to network and
14 functional analyses using ingenuity pathway analysis (IPA) version 9.0
15 (<http://www.ingenuity.com>).

16 **3 Results and discussion**

17 **3. 1. Western blot analysis of lysine-acetylated urinary proteins of healthy** 18 **humans**

19 In order to explore the status of lysine acetylation in the urine proteome of healthy
20 humans, western blot analysis was performed using a pan anti-acetyllysine antibody.
21 The results showed that multiple protein bands with a wide range of molecular
22 weights were detected. In addition to histones (11–15 kDa and 26 kDa), many

1 non-histone proteins with clear bands were observed (Fig 1B and Fig. S1), indicating
2 that lysine acetylation is highly abundant in human urine. Furthermore, the acetylated
3 proteins showed different patterns among different healthy individuals. This suggests
4 that lysine acetylation levels reflect various statuses of healthy people.

5 **3. 2. Profiling of lysine-acetylated urinary proteins**

6 Because lysine acetylation plays a vital role in modulating various molecular
7 processes and widely exists in the urine, we comprehensively profiled
8 lysine-acetylated proteins in the urine using immune-affinity-based acetyllysine
9 peptide enrichment integrated with LC-MS/MS.

10 We first identified 761 acetylated peptides (Peptide-Spectrum Matches FDR < 0.1 %)
11 (Table S1) matched on 315 lysine-acetylated proteins (Unique peptides \geq 1) with 629
12 Kac sites (AScore \geq 59) in normal human urine (Table S2). Among these proteins, 18
13 contained five or more Kac sites, accounting for 5.7% of the total detected Kac
14 proteins with an average degree of acetylation of 2.

15 When these 315 proteins were searched in the most comprehensive urinary database
16 (www.urimarker.com/urine/) (Fig 2A), 242 were found in 1D group (proteins
17 detectable when separated by 1D LC) and 71 in the 2D and 3D group (2D: high-pH
18 RPLC coupled LC- MS/MS, 3D: GELFrEE/LP-IEF fraction prior to 2D), which were
19 less abundant proteins; 2 were not found in this database.

20 This is the first proteome-wide characterization of lysine acetylation proteins in
21 normal human urine. A total of 629 acetylation sites on 315 proteins were identified,
22 including some very low-abundance proteins. Enrichment of acetylated peptides and a

1 high pH pre-fraction of unenriched peptides vastly reduced the sample complexity
2 and increased the dynamic range. For albuminuria occurring in some kidney diseases,
3 the masking effects of highly abundant proteins and ion suppression were much
4 stronger. To address this issue, a combination of two types of PTMs, such as
5 *N*-glycosylated proteins and lysine-acetylated peptide enrichment, may be used.

6 **3. 3. Analysis of lysine acetylation sites**

7 To examine the relative abundance of the amino acids flanking the acetylation sites,
8 we analyzed the 761 lysine-acetylated peptides using Motif-X software. A negatively
9 charged residue, aspartate, at the +1 and +5 positions of acetyllysine was identified
10 (Fig 2B). According to previous studies of human lysine acetylation (23), aspartate
11 was found to be enriched at the -1, -2, and +1 positions of the lysine acetylation site.

12 To further explore the relationship between the lysine acetylation and protein
13 secondary structures, we performed structural analysis of all acetylated proteins using
14 NetSurfP. Acetylated lysine was found in alpha-helices approximately 8.8% more
15 frequently than the average lysine and in the coil approximately 5.5% less frequently
16 ($p < 0.01$) (Fig 2C). Thus, acetylated lysine appears to be enriched in structured
17 regions and depleted in unstructured regions, which is in concordance with previous
18 reports (7, 12).

19 **3. 4. Functional analysis of lysine-acetylated proteins in urine**

20 Classification analysis of the lysine-acetylated proteins identified in urine was
21 performed using the IPA tool (<http://www.ingenuity.com>). As shown in Fig 3A, 42.4%
22 of lysine-acetylated proteins were annotated in the cytoplasm, 33.3% in the

1 extracellular space, 18.8% in the plasma membrane, and 5.2% in the nucleus. The
2 proportion of cytoplasm proteins in the lysine acetylome was much higher than that in
3 the whole urinary proteome (17%) (24), while the other proportions of extracellular
4 space or plasma membrane proteins were much lower than that in the whole urinary
5 proteome (38% and 31%) (24). The major types of lysine-acetylated proteins were
6 enzymes (enzyme 25.9%, peptidase 11%, kinase 2.3%, phosphatase 1.9%, and
7 transporters 10%) (Fig 3B).

8 Enriched bio functions and diseases were analyzed using the IPA tool. As shown in
9 Fig 3C, the notable bio functions of these proteins were cell-to-cell signaling and
10 interaction (87 proteins), cell death and survival (118 proteins), cellular growth and
11 proliferation (115 proteins), free radical scavenging (28 proteins), and cellular
12 movement (76 proteins). The major diseases and disorders associated with these
13 proteins were found to be endocrine system disorders (110 proteins), organismal
14 injury and abnormalities (299 proteins), dermatological diseases and conditions (73
15 proteins), metabolic disease (95 proteins), and neurological diseases (116 proteins).
16 These results provide valuable information regarding lysine acetylation in the urine
17 and may be useful in biomarker studies these diseases and disorders.

18 The main canonical pathways (Fig 3D) in which the lysine-acetylated proteins
19 participated, including LXR/RXR activation, acute phase response signaling, and
20 FXR/RXR activation, showed the same rankings in the whole urinary proteome.
21 Among these top 7 networks, three were associated with glucose metabolism, such as
22 glycolysis I, sucrose degradation V (mammalian), and gluconeogenesis I.

- 1 Lysine acetylated proteins in the urine may reflect protein acetylation status in cells.
- 2 Discarding acetylated proteins may provide a way to modulate levels of lysine
- 3 acetylated proteins in cells. Our dataset provides a useful resource for the further
- 4 discovery of the lysine acetylated proteins as biomarker in urine.
- 5

1 **Acknowledgements**

2 Funding: This work was supported by the National Key Research and Development
3 Program of China (grant number 2016YFC1306300); the National Basic Research
4 Program of China (grant number 2013CB530850); and funds from Beijing Normal
5 University (grant numbers 11100704, 10300-310421102).

6

7

1 **5 References:**

- 2 1. Gao Y. Urine-an untapped goldmine for biomarker discovery? *Sci China Life Sci.*
3 2013;56(12):1145-6.
- 4 2. Li M, Zhao M, Gao Y. Changes of proteins induced by anticoagulants can be more sensitively
5 detected in urine than in plasma. *Sci China Life Sci.* 2014;57:649-54.
- 6 3. Ste´phane D, Anne P, Benjamin B, Harald M. Urine in Clinical Proteomics. *Mol Cell Proteomics.*
7 2008;7:1850-62.
- 8 4. Jia L, Liu X, L L, al e. Urimem, a membrane that can store urinary proteins simply and
9 economically, makes the large-scale storage of clinical samples possible. *Sci China Life Sci.*
10 2014;57:336-9.
- 11 5. Zhang F, Cheng X, Yuan Y, Wu J, Gao Y. Urinary microRNA can be concentrated, dried on
12 membranes and stored at room temperature in vacuum bags. *PeerJ.* 2015;3:e1082.
- 13 6. Mann M, Jensen ON. Proteomic analysis of post-translational modifications. *Nature*
14 *Biotechnology* 2003; 21:7.
- 15 7. Kim SC, Sprung R, Chen Y, Xu Y, Ball H, Pei J, et al. Substrate and functional diversity of lysine
16 acetylation revealed by a proteomics survey. *Molecular cell.* 2006;23(4):607-18.
- 17 8. Wang L, Li F, Sun W, Wu S, Wang X, Zhang L, et al. Concanavalin A-captured glycoproteins in
18 healthy human urine. *Molecular & cellular proteomics : MCP.* 2006;5(3):560-2.
- 19 9. Olsen JV, Blagoev B, Gnad F, Macek B, Kumar C, Mortensen P, et al. Global, in vivo, and
20 site-specific phosphorylation dynamics in signaling networks. *Cell.* 2006;127(3):635-48.
- 21 10. Vidali G, Gershey EL, Allfrey VG. Chemical Studies of Histone Acetylation. The Distribution of
22 ϵ N-acetyllysine in Calf Thymus Histones. *J Biol Chem.* 1968;243:6361-6.
- 23 11. Gu W, Roeder GR. Activation of p53 Sequence-Specific DNA Binding by Acetylation of the p53
24 C-Terminal Domain. *Cellular signalling.* 1997;90:595-606.
- 25 12. Choudhary C, Kumar C, Gnad F, Nielsen ML, Rehman M, Walther TC, et al. Lysine acetylation
26 targets protein complexes and co-regulates major cellular functions. *Science.* 2009;325(5942):834-40.
- 27 13. Zhang J, Sprung R, Pei J, Tan X, Kim S, Zhu H, et al. Lysine acetylation is a highly abundant and
28 evolutionarily conserved modification in *Escherichia coli*. *Molecular & cellular proteomics : MCP.*
29 2009;8(2):215-25.
- 30 14. Wang Q, Zhang Y, Yang C, Xiong H, Lin Y, Yao J, et al. Acetylation of metabolic enzymes
31 coordinates carbon source utilization and metabolic flux. *Science.* 2010;327(5968):1004-7.
- 32 15. Menzies KJ, Zhang H, Katsyuba E, Auwerx J. Protein acetylation in metabolism - metabolites and
33 cofactors. *Nature reviews Endocrinology.* 2016;12(1):43-60.
- 34 16. Voelter-Mahlknecht S. Epigenetic associations in relation to cardiovascular prevention and
35 therapeutics. *Clinical epigenetics.* 2016;8:4.
- 36 17. Pons D, de Vries FR, van den Elsen PJ, Heijmans BT, Quax PH, Jukema JW. Epigenetic histone
37 acetylation modifiers in vascular remodelling: new targets for therapy in cardiovascular disease.
38 *European heart journal.* 2009;30(3):266-77.
- 39 18. Li QR, Fan KX, Li RX, Dai J, Wu CC, Zhao SL, et al. A comprehensive and non-prefractionation
40 on the protein level approach for the human urinary proteome: touching phosphorylation in urine.
41 *Rapid communications in mass spectrometry : RCM.* 2010;24(6):823-32.
- 42 19. Rotilio D, Della Corte A, D'Imperio M, Coletta W, Marcone S, Silvestri C, et al. Proteomics:
43 bases for protein complexity understanding. *Thrombosis research.* 2012;129(3):257-62.

- 1 20. Zhang J, Xin L, Shan B, Chen W, Xie M, Yuen D, et al. PEAKS DB: de novo sequencing assisted
2 database search for sensitive and accurate peptide identification. *Molecular & cellular proteomics* :
3 *MCP*. 2012;11(4):M111 010587.
- 4 21. Chou MF, Schwartz D. Biological sequence motif discovery using motif-x. *Curr Protoc*
5 *Bioinformatics*. 2011;Chapter 13:Unit 13 5-24.
- 6 22. Petersen B, Petersen TN, Andersen P, Nielsen M, Lundegaard C. A generic method for assignment
7 of reliability scores applied to solvent accessibility predictions. *BMC structural biology*. 2009;9:51.
- 8 23. Zhu X, Liu X, Cheng Z, Zhu J, Xu L, Wang F, et al. Quantitative Analysis of Global Proteome and
9 Lysine Acetylation Reveal the Differential Impacts of VPA and SAHA on HL60 Cells. *Scientific reports*.
10 2016;6:19926.
- 11 24. Marimuthu A, O'Meally RN, Chaerkady R, Subbannayya Y, Nanjappa V, Kumar P, et al. A
12 comprehensive map of the human urinary proteome. *Journal of proteome research*.
13 2011;10(6):2734-43.

14

15

16

17

18

19

20

21

22

23

24

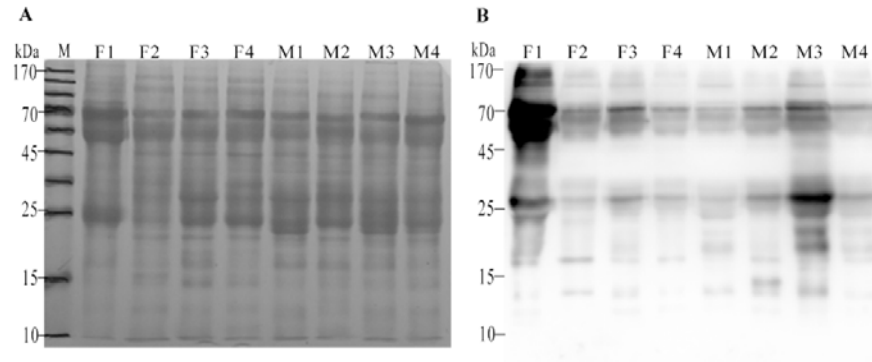
25

26

27

28

29



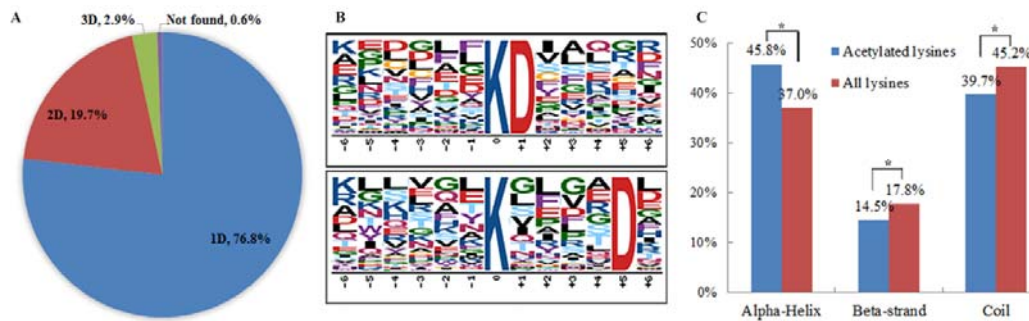
1

2 Figure 1. Overview of lysine acetylation in urine proteome of healthy humans.

3 (A) SDS-PAGE analysis of urinary proteins followed by transfer to PVDF membrane

4 and staining with Coomassie Brilliant Blue; (B) Western blotting analysis of urinary

5 proteins. (M: male, F: female).



6

7 Figure 2. Statistics of the lysine-acetylated proteins.

8 (A) Estimation of relative abundance of urinary lysine-acetylated proteins. When the

9 315 proteins were searched in the most comprehensive urinary database, 242 were

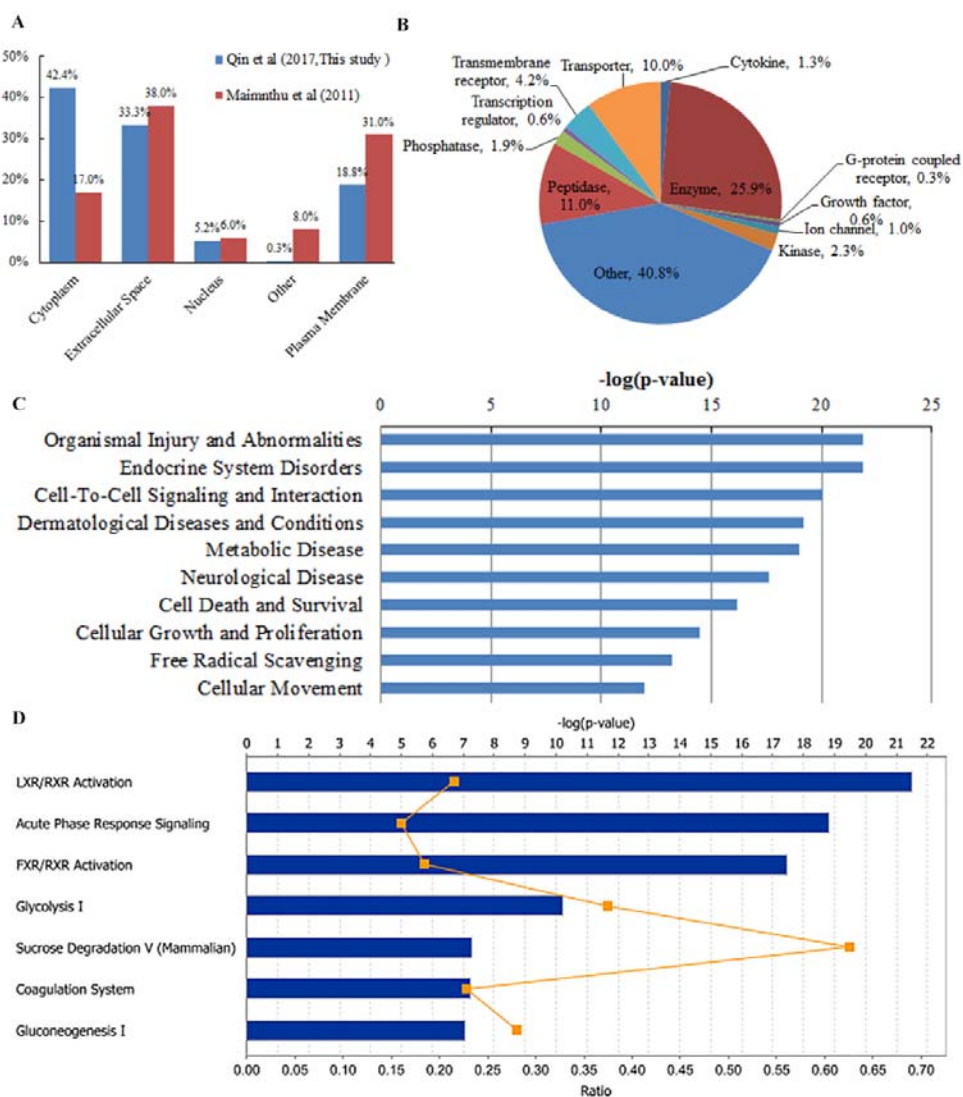
10 found in the 1D group (proteins detectable when separated by 1D LC) and 71 in the

11 2D and 3D group (2D: high-pH RPLC coupled LC- MS/MS, 3D: GELFrEE/LP-IEF

12 fraction prior to 2D), which were less abundant proteins. (B) Acetylation motifs and

13 conservation of acetylation sites. (C) Distribution of acetylated and non-acetylated

14 lysine residues in protein secondary structures (* $p < 0.01$).



1

2 Figure 3. Functional analysis of the lysine acetylome in urine.

3 The lysine-acetylated proteins identified in this study were classified according to

4 their (A) subcellular location, (B) protein family, (C) enriched bio functions and

5 diseases, and (D) canonical pathways and networks.

6 **Supplementary Material:**

7 The following supporting information and the raw MS/MS data have been uploaded to

8 the data repository. (<https://figshare.com/s/4983659b9db1d69b7b8c>)

- 1 Supporting Fig S1. Overview of lysine acetylation in urine proteome of healthy
- 2 humans. (A) SDS-PAGE analysis of urinary proteins followed by transfer to PVDF
- 3 membrane and staining with Coomassie Brilliant Blue; (B) Western blotting analysis
- 4 of urinary proteins. (M: male, F: female).
- 5 Supporting Table S1. Acetylated peptides (Peptide-Spectrum Matches FDR < 0.1 %).
- 6 Supporting Table S2. Acetylated proteins (Unique peptides ≥ 1) with 629 Kac sites
- 7 (AScore ≥ 59) in normal human urine.
- 8 Supporting Spectra S1. The represent MS/MS spectra for 761 lysine acetylated
- 9 peptides.
- 10 Supporting Spectra S2. The remaining MS/MS spectra for 761 lysine acetylated
- 11 peptides.