

Harmonization of cortical thickness measurements across scanners and sites

Jean-Philippe Fortin^{1,*}, Nicholas Cullen^{2,3,*}, Yvette I. Sheline^{3,4,5}, Warren D. Taylor⁶, Irem Aselcioglu³, Phil Adams⁷, Crystal Cooper⁸, Maurizio Fava⁹, Patrick J. McGrath⁷, Melvin McInnis¹⁰, Ramin V. Parsey¹¹, Mary L. Phillips¹², Madhukar H. Trivedi⁸, Myrna M. Weissman^{7,13,14}, and Russell T. Shinohara^{1,3,†}

¹Department of Biostatistics, Epidemiology, and Informatics, Perelman School of Medicine, University of Pennsylvania

²Department of Electrical and Systems Engineering, University of Pennsylvania

³Center for Neuromodulation in Depression and Stress, Department of Psychiatry, Perelman School of Medicine, University of Pennsylvania

^{4,5}Departments of Radiology and Neurology, Perelman School of Medicine, University of Pennsylvania

⁶Department of Psychiatry, Vanderbilt University

⁷Department of Psychiatry, Columbia University College of Physicians & Surgeons

⁸Department of Psychiatry, University of Texas Southwestern Medical Center

⁹Department of Psychiatry, Massachusetts General Hospital

¹⁰Department of Psychiatry, University of Michigan School of Medicine

¹¹Departments of Psychiatry and Radiology, Stony Brook University

¹²Department of Psychiatry, University of Pittsburgh School of Medicine

¹³Division of Epidemiology, New York State Psychiatric Institute

¹⁴Mailman School of Public Health, Columbia University

Abstract

With the proliferation of multi-site neuroimaging studies, there is a greater need for handling non-biological variance introduced by differences in MRI scanners and acquisition protocols. Such unwanted sources of variation, which we refer to as “scanner effects”, can hinder the detection of imaging features associated with clinical covariates of interest and cause spurious findings. In this paper, we investigate scanner effects in two large multi-site studies on cortical thickness measurements, across a total of 11 scanners. We propose a set of general tools for visualizing and identifying scanner effects that are generalizable to other modalities. We then propose to use ComBat, a technique adopted from the genomics literature and recently applied to diffusion tensor imaging data, to combine and harmonize cortical thickness values across scanners. We show that ComBat removes unwanted sources of scan variability while simultaneously increasing the power and reproducibility of subsequent statistical analyses. We also show that ComBat is useful for combining imaging data with the goal of studying life-span trajectories in the brain.

Keywords: Harmonization, Multi-Site, Cortical thickness, ComBat, Inter-scanner.

*Equal contribution

†To whom correspondence should be addressed. Email: rshi@mail.med.upenn.edu

1 Introduction

Large-scale efforts aimed at collecting diverse neuroimaging datasets for dissemination and sharing are rapidly growing in number and scale [Di Martino et al., 2014, Keator et al., 2013, Mennes et al., 2013]. Having multiple scan sites is necessary in large-scale studies due to logistical issues and geographic variability in subject populations [Van Horn and Toga, 2009]. However, a major drawback of combining neuroimaging studies across sites is the introduction of non-biological sources of variability to the data, typically related to the image acquisition protocol and hardware.

Properties of MRI scanners such as field strength, manufacturer, gradient nonlinearity, subject positioning, and longitudinal drift have been long understood to increase bias and variance in the measurement of brain volume changes [Takao et al., 2011], regional cortical thickness [Han et al., 2006], voxel-based morphometry [Takao et al., 2014], and structural, functional, and diffusion images in general [Jovicich et al., 2006, Takao et al., 2011]. Such unwanted sources of bias and variability are typically included as confound variables in the analysis of neuroimaging data. Recent work has suggested that standard methods for including confound variables for the prediction of an outcome using neuroimaging data perform no better than baseline models which ignore confounding [Rao et al., 2017]. Furthermore, non-biological confounders typically have *a priori* unpredictable effects, thus compromising consistency and reproducibility of the downstream analyses across studies. This suggests that non-biological sources of variability should be handled differently. Similar to *batch effects* in genomics (see Leek et al. [2010] for a review of batch effects), we use the term *scanner effects* in neuroimaging to refer to unwanted variation that is (1) non-biological in nature and (2) associated with differential scanning equipment or parameter configurations. Because different imaging sites use different physical scanners, site effects are one example of scanner effects.

Recently, ComBat [Johnson et al., 2007], a batch-effect correction tool commonly used in genomics, has been adapted for the modeling and removal of site effects in multi-site DTI studies [Fortin et al., 2017]. ComBat was found to be an effective harmonization technique that both removes unwanted variation associated with site and preserves biological associations in the data.

In this paper, we propose to use ComBat for harmonizing cortical thickness measurements obtained from multiple sites. We investigate this in region-level cortical thickness measurements in two large multi-site datasets: the Establishing Moderators and Biosignatures of Antidepressant Response in Clinical care study (EMBARC) [Trivedi et al., 2016], a multi-center study with 4 sites, and the Vascular Depression: Longitudinal Changes (VDLC) study, which was conducted at Washington University in St-Louis and Duke University, and used a total of 7 scanners. We first propose a set of general tools for the visualization and identification of site effects that are generalizable to other modalities. We then harmonize the data using ComBat, and compare to two other harmonization methods: residuals and phenotype-adjusted residuals. We show that ComBat is successful at removing scanner and site effects, while preserving the variability associated with biology. We also show that ComBat can be used to combine datasets across multiple sites for the study of life-span trajectories.

	EMBARC	Vascular
N sites/scanners	4	7
N subjects	187	236
N females (%)	116 (62)	139 (59)
Age range	[18,65]	[58,95]

Table 1. Description of the EMBARC and Vascular study samples

2 Methods

2.1 Data and Preprocessing

EMBARC dataset

The EMBARC study aims to identify moderators and mediators of antidepressant response in adult patients with Major Depressive Disorder [Trivedi et al., 2016, Webb et al., 2016]. The dataset includes structural images, demographic variables and clinical variables. Participants were 200 unmedicated depressed individuals with Major depressive disorder and 40 healthy individuals recruited for EMBARC. Subjects were 18-65 years old, had to report age of depression onset before age 30 and had to be fluent in English. Clinical variables included the Hamilton Depression Rating Scale (HAMD) [Hamilton, 1960], the Mood and Anxiety Symptom Questionnaire (MASQ) [Watson and Clark, 1991], the Snaith-Hamilton Pleasure Scale [Snaith et al., 1995], the Spielberger State-Trait Anxiety Inventory (STAI) [Spielberger, 1983] and the Quick Inventory for Depression Symptomatology (QIDS) depression score [Rush et al., 2003].

The scans were acquired at four different imaging sites, with acquisition protocols described in Greenberg et al. [2015]. The four sites were Columbia University (CU), University of Texas Southwestern (TX), Massachusetts General Hospital (MG) and the University of Michigan (UM). All of the sites used 3T scanners, however the manufacturer differed from site to site: UM used a Philips Ingenia 3T scanner, TX used a Philips Achieva 3T scanner, MG used a Siemens TIM Trio 3T scanner and CU used a GE SIGNA HDx 3T scanner. Imaging parameters for each scanner are described in Greenberg et al. [2015]. After quality control, the final baseline dataset consisted of 187 subjects.

Vascular dataset

The Vascular Depression: Longitudinal Changes (VDLC) study aims to study the longitudinal effect of vascular disease in the pathogenesis of late-life depression (LLD). Participants were 117 individuals affected by LLD and 59 healthy controls, for a total of 236 participants. Participants were 58-95 years old. For the purpose of investigating site effects, we only considered one time point for each participant; we retained the scan from the last visit. Scans were acquired at two sites: Duke University and Washington University in St-Louis, across 7 different scanners, described in Table 2.

	Location	Manufacturer	Platform	Field (T)	n	Label
EMBARC study						
Site 1	CU	GE	SIGNA HDx	3	46	CU
Site 2	MG	Siemens	TIM Trio	3	26	MG
Site 3	TX	Philips	Achieva	3	72	TX
Site 4	UM	Philips	Ingenia	3	43	UM
Vascular study						
Scanner 1	WashU	Siemens	Sonata	1.5	23	W_Sonata_A
Scanner 2	WashU	Siemens	Sonata	1.5	78	W_Sonata_B
Scanner 3	WashU	Siemens	TIM Trio	3	16	W_TIMTrio_A
Scanner 4	WashU	Siemens	TIM Trio	3	40	W_TIMTrio_B
Scanner 5	Duke	Siemens	TIM Trio	3	24	D_TIMTrio_A
Scanner 6	Duke	Siemens	TIM Trio	3	38	D_TIMTrio_B
Scanner 7	Duke	GE	SIGNA Excite	1.5	17	D_SIGNA

Table 2. Description of the scanners CU: Columbia University; MG: Massachusetts General Hospital; TX: University of Texas Southwestern; UM: University of Michigan; Duke: Duke University; WashU: Washington University in St-Louis.

2.2 Extraction of cortical thickness measurements

For the extraction of the cortical thickness measurements, we ran the ANTs cortical thickness pipeline, which has been shown to provide accurate and robust cortical thickness measurements [Tustison et al., 2014]. We used an average labeled template previously constructed from a subset of participants of the Open Access Series of Imaging Studies (OASIS) [Marcus et al., 2007] to identify the cortical regions for each subject of the EMBARC study.

2.3 Harmonization procedures

For the removal of site effects, we compare three different harmonization procedures: **(1)** Removal of site effects using linear regression without adjusting for biological covariates. We refer to the method as *Residuals* **(2)** Removal of site effects using linear regression, adjusting for known covariates. We refer to the method as *Adjusted Residuals*. **(3)** Removal of site effects using *ComBat* [Johnson et al., 2007]. We also compare the three methods to the absence of harmonization, that we refer to as *Raw*. We describe below the different harmonization techniques.

For the different methods, we use the following notation. Let y_{ijv} be the $n \times 1$ vector of cortical thickness measurement for imaging site i , for participant j and feature v , for a total of $(k + 1)$ sites, n participants and V features. Depending on the cortical thickness modality, the features can either be ROIs, vertices or voxels. Furthermore, let \mathbf{X} be the $p \times n$ matrix of biological covariates of interests, and let \mathbf{Z} be the $k \times n$ matrix of site indicators (deviations from a baseline site).

2.3.1 Residuals harmonization

The residuals harmonization method adjusts the images for site effects using linear regression. It does not take into account the potential confounding between the site variables and the biological covariates of interest in the study. The regression model can be written as

$$y_{ijv} = \alpha_v + \mathbf{Z}_{ij}^T \theta_v + \epsilon_{ijv} \quad (1)$$

where α_v is the average cortical thickness for the reference site for feature v and where θ_v is the $k \times 1$ vector of the coefficients associated with \mathbf{Z} for feature v . We assume that the residual terms ϵ_{ijv} have mean 0. For each feature separately, we obtain an estimate $\hat{\theta}_v$ of the parameter vector θ_v using regular ordinary least squares (OLS). The removal of site effects is done by subtracting the estimated site effects, that is we set the residuals-harmonized cortical thickness values to be

$$y_{ijv}^{\text{Res}} = y_{ijv} - \mathbf{Z}_{ij}^T \hat{\theta}_v$$

2.3.2 Adjusted residuals harmonization

The adjusted residuals harmonization method supervises the removal of site effects by adjusting for biological covariates, using the following linear regression model:

$$y_{ijv} = \alpha_v + \mathbf{X}_{ij}^T \beta_v + \mathbf{Z}_{ij}^T \theta_v + \epsilon_{ijv} \quad (2)$$

where α_v is the average cortical thickness for the reference site for feature v , where θ_v is the $k \times 1$ vector of the coefficients associated with \mathbf{Z} for feature v and where β_v is the $p \times 1$ vector of coefficients associated with \mathbf{X} for feature v . We assume that the residual terms ϵ_{ijv} have mean 0. For each feature separately, we obtain estimates $\tilde{\theta}_v$ and $\tilde{\beta}_v$ using regular ordinary least squares (OLS) on the full model described in Equation 2. The removal of site effects is done by subtracting the estimated site effects only, that is we set the adjusted-residuals-harmonized cortical thickness values to be

$$y_{ijv}^{\text{Adj}} = y_{ijv} - \mathbf{Z}_{ij}^T \tilde{\theta}_v$$

2.3.3 ComBat harmonization

The Combat harmonization model [Johnson et al., 2007] extends the adjusted residuals harmonization model presented in Equation 2 in two ways: (1) it models site-specific scaling factors and (2) it uses empirical Bayes to improve the estimation of the site parameters for small sample sizes. It posits a unique linear model of location and scale at each feature, making the assumption that scanners (or sites) have both an additive and multiplicative effects on the data. The model assumes that the expected values of the imaging feature measurements can be modeled as a linear combination of the biological variables and the site effects, whose error term is modulated by additional site-specific scaling factors. The algorithm uses empirical Bayes to improve the estimation of the model parameters in small sample size studies. The ComBat model, originally developed for gene

expression microarray data, was reformulated in Fortin et al. [2017] for the harmonization of DTI data scalar maps. Using the previous notation, the model can be written as

$$y_{ijv} = \alpha_v + \mathbf{X}_{ij}^T \boldsymbol{\beta}_v + \mathbf{Z}_{ij}^T \boldsymbol{\theta}_v + \delta_{iv} \epsilon_{ijv}, \quad (3)$$

where α_v is the average cortical thickness for the reference site for feature v , where $\boldsymbol{\theta}_v$ is the $k \times 1$ vector of the coefficients associated with the site indicators \mathbf{Z} for feature v and where $\boldsymbol{\beta}_v$ is the $p \times 1$ vector of coefficients associated with \mathbf{X} for feature v . We assume that the residual terms ϵ_{ijv} have mean 0. The parameters δ_{iv} describe the multiplicative site effect of the j -th site on voxel v . Consistent with the ComBat model notation used in Fortin et al. [2017], we rewrite $\mathbf{Z}_{ij}^T \boldsymbol{\theta}_v$ as γ_{iv} :

$$y_{ijv} = \alpha_v + \mathbf{X}_{ij}^T \boldsymbol{\beta}_v + \gamma_{iv} + \delta_{iv} \epsilon_{ijv}, \quad (4)$$

The procedure for the estimation of the site parameters γ_{iv} and δ_{iv} uses Empirical Bayes, and is described in Johnson et al. [2007] and Fortin et al. [2017]. The final ComBat-harmonized cortical thickness measurements are defined as

$$y_{ijv}^{\text{ComBat}} = \frac{y_{ijv} - \hat{\alpha}_v - \mathbf{X}_{ij} \hat{\boldsymbol{\beta}}_v - \gamma_{iv}^*}{\delta_{iv}^*} + \hat{\alpha}_v + \mathbf{X}_{ij} \hat{\boldsymbol{\beta}}_v$$

2.4 Methods evaluation framework

To investigate and correct site effects using ComBat, we performed a set of analysis tasks of increasing complexity on the cortical thickness data. We first performed an exploratory analysis to confirm the existence of site effects in the data. Next, we performed various univariate tests of significance to understand the relationships between individual features in the data and individual target variables. Finally, we applied various multivariate predictive models to understand how cortical thickness relates to target variables. Our analyses were aimed at both identifying and correcting site effects at multiple levels of complexity, along with understanding the specific effects of ComBat on downstream analysis.

3 Results

We first present visualization tools for investigating scanner effects in a multi-site study, and present several metrics to quantify such scanner effects. We use the cortical thickness measurements from the EMBARC study to illustrate the different methodologies. We next evaluate different harmonization procedures in the EMBARC study for the correction of site effects. We then show that the results are generalizable to other studies, using the VDLC dataset as an external validation. Finally, we combine and harmonize the EMBARC and VDLC studies, which have different age range, and show that it is possible to improve multi-site cross-sectional analyses of life-span trajectories by using ComBat harmonization.

3.1 Visualization of site effects

With high-dimensional data, routinely using fast and efficient visualization tools helps identifying biases and technical artifacts that affect the data globally. In this section, we present several visual tools, commonly used in genomics and other fields, for the identification and diagnostic of site effects in imaging data. We use the EMBARC dataset as an example dataset. We present the different diagnostic plots in Figure 1. First, for each subject, we summarize the cortical thickness measurements into a boxplot, and present the boxplots in Figure 1a in which the colors represent the four different imaging sites. We observe a global downwards shift in the cortical thickness measurements from the MG site, as well as increased variability in the measurements from the TX and UM sites relative to the two other sites. The four boxplots presented in Figure 1b summarize the distribution of the median cortical thicknesses at each site. This facilitates the visualization of the site-specific additive and scaling effects.

In Figure 1c, the boxplots from Figure 1a were sorted by age. Consistent with the literature, we observe a global decrease of the cortical thickness measurements with age, and note that combining measurements from multiple sites adds variability to the trend (blue boxplots are shifted downwards). We also observe that the imaging sites are not distributed equally across the age span, with more younger subjects from the MG and CU sites (more blue and grey boxplots to the left) and older subjects coming from the TX site (more light red boxplots to the right). This indicates some confounding level between imaging site and age. In Figure 1d, we present the median cortical thickness measurements as a function of age to visually inspect the global image-age relationship.

In Figure 1e, we present bivariate scatter plots of the first 3 principal components (PCs) from a principal component analysis (PCA) performed on the cortical thickness values. We note that the second PC is highly associated with site, confirming that a large proportion of the variation in the data is explained by site.

Finally, we present in Figure 2 the distribution of age, gender, HAMD score and QIDS score across imaging sites. This allows a visual inspection of potential confounding level between the different covariates and imaging site. The width of the boxplots represents the sample size at each site. We note that age is highly unbalanced across sites, with older subjects for the TX site, while the gender ratio seems to be equally distributed across sites. The QIDS score appears to be also unbalanced with respect to imaging site, and anti-correlated with age.

We also produced a similar visualization for the VDLC dataset in Figure A.1. We note that there is a clear positive shift in the cortical thickness measurements for images acquired on 3T scanners in comparison to images acquired on 1.5T scanners.

3.2 Quantification of site effects in the EMBARC study

We first evaluated the presence of global site effects in the cortical thickness measurements. For each subject, we summarized the measurements across regions by taking the median as a global measure. We present in Figure 1b the distribution of the median cortical thickness stratified by site. Using ANOVA, the median cortical thickness was significantly different across the four sites ($p = 1.1 \times 10^{-10}$). More specifically, the median cortical thickness for the MG site was significantly

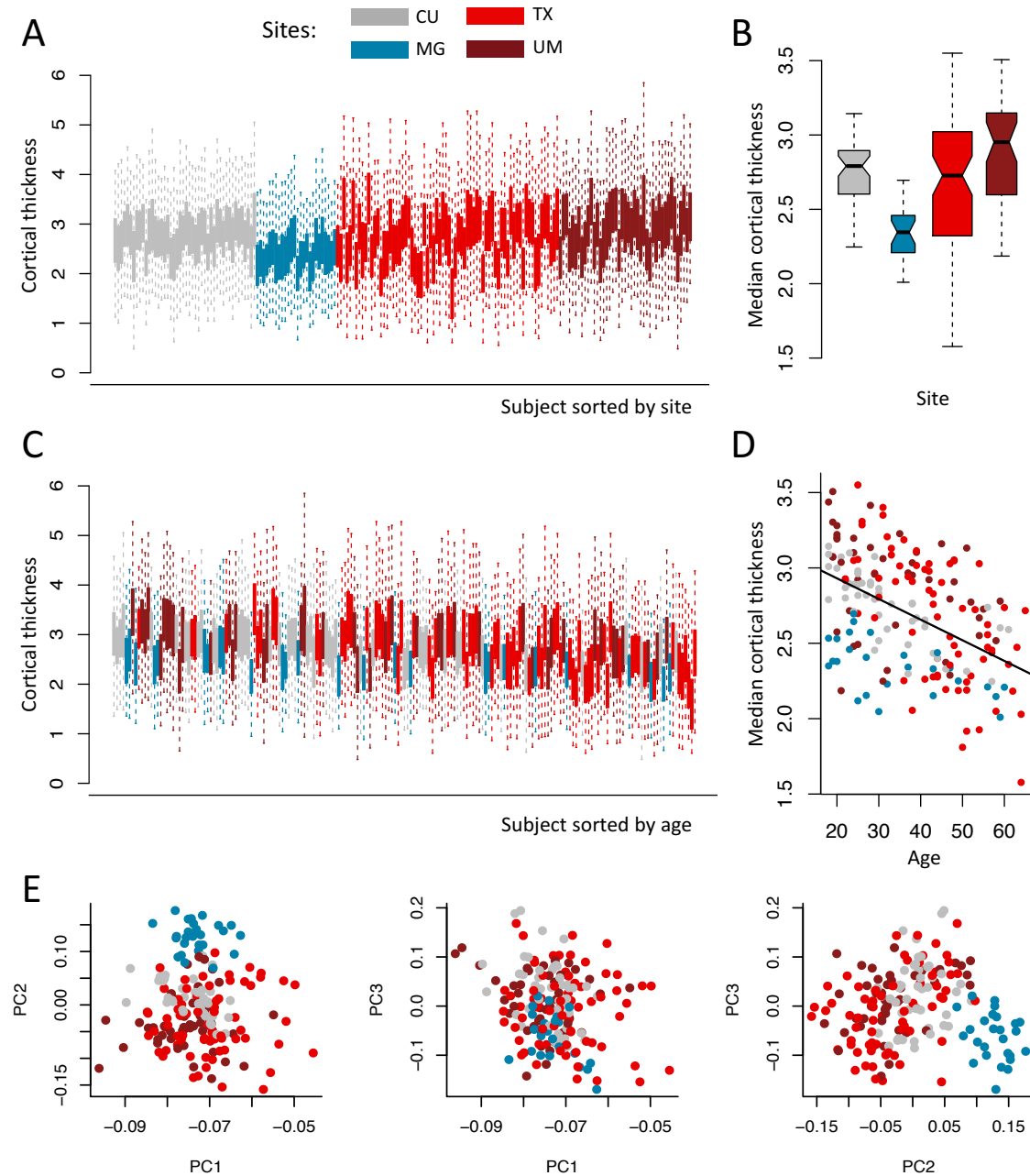


Figure 1. Visualization of sites effects in the EMBARC study. Plots are colored by imaging site: Columbia University (CU), University of Texas Southwestern (TX), Massachusetts General Hospital (MG) and University of Michigan (UM). (a) Boxplots of the cortical thickness sorted by site. Each boxplot represents the distribution of the 102 cortical regions for one subject. (b) Boxplots of the median cortical thickness, grouped by site. The MG site has lower median cortical thickness on average, while the TX and UM sites have higher variability. (c) Same as (a), but sorted by age. (d) Relationship between median cortical thickness and age, colored by site. (e) Plots of the first 3 principal components (PCs) from principal component analysis (PCA), colored by site. The second PC is highly associated with site.

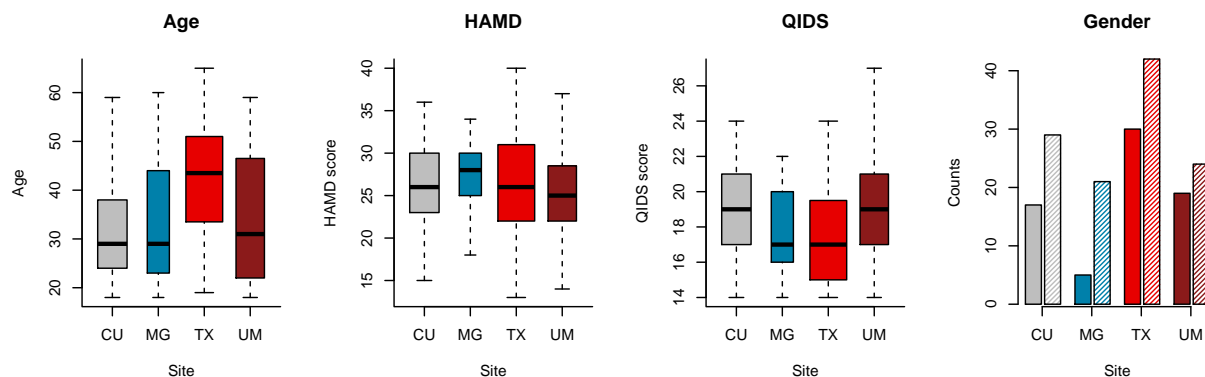


Figure 2. Covariates distribution in the EMBARC study. Distributions of age, gender, HAMD score and QIDS scores across sites for the EMBARC study. The width of the boxplots is proportional to the number of subjects scanned at each site. The full and shaded bars in the gender barplots represent males and females respectively. HAMD: Hamilton Depression Rating Scale; QIDS: Quick Inventory for Depression Symptomatology.

different from those of the three remaining sites, adjusting for multiple comparisons using Tukey’s method [Tukey, 1949].

Because the scale of the measurements can also be affected by scanner, we also compared the variances of the median cortical thickness measurement across sites. To do so, we performed the Bartlett’s sphericity test [Bartlett, 1937], which assesses whether or not the variances are homogeneous across sites. To avoid confounding of site with age and gender, we first regressed out the variation explained by age and gender; the test was significant ($p = 1.8 \times 10^{-7}$). We subsequently compared the pairwise site variances using the usual F-tests for variances ratio, and four of the pairs were significant after adjusting for multiple comparisons using Bonferroni correction: TX vs. CU, TX vs. MG, UM vs. CU, and UM vs. MG. The results are consistent with the spread of the boxplots presented in Figure 1b.

We then tested each ROI individually for site effects by calculating an ANOVA F-test. We obtained 53 ROIs significantly associated with site, using Bonferroni correction to adjust for multiple comparisons (adjusted $p < 0.05$). Because Bonferroni correction is a conservative approach to control for the family-wise error rate (FWER), we alternatively corrected for multiple comparisons using the permutation-based one-step maxT procedure [Westfall and Young, 1993, Dudoit et al., 2003], and obtained 60 ROIs significantly associated with site (adjusted $p < 0.05$, $B = 10,000$ permutations). We present in Figure B.1a the observed R^2 from ANOVA and the distribution of the maximum R^2 obtained from each permutation. To test for scanner-specific scaling effects, we also tested each feature individually for homogeneity of variances across sites using Bartlett’s test. We obtained 41 ROIs with variances significantly associated with site (adjusted $p < 0.05$, $B = 10,000$ permutations).

Quantification of the site effects for the VDLC study are provided in the Appendix A.1.

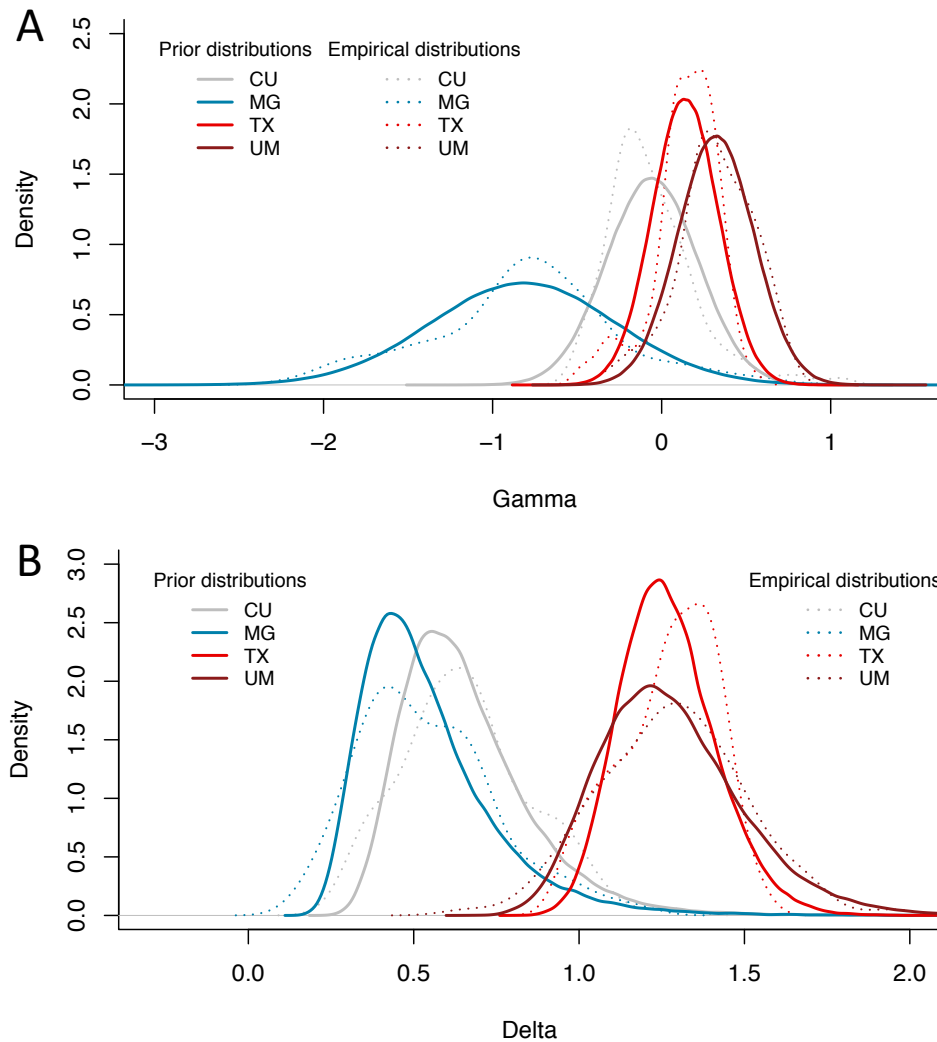


Figure 3. Prior distributions of the site effect parameters estimated by ComBat in the EMBARC study. Location and scale site-specific parameters estimated by ComBat, for the EMBARC study. **(a)** The ComBat-estimated prior distributions for the site-specific location parameters γ are shown in solid lines, and the empirical distributions of the site-specific location parameters are shown in dashed lines. **(b)** The ComBat-estimated prior distributions for the site-specific scale parameters δ are shown in solid lines, and the empirical distributions of the site-specific scale parameters are shown in dashed lines. The prior distributions fit well the empirical distributions for both the location and scale parameters.

3.3 Removal of site effects with harmonization

To remove site effects in the EMBARC dataset, we applied three different harmonization techniques: (1) Residuals: removal of site effects estimated from linear regression; (2) Adjusted Residuals: removal of site effects estimated from linear regression, adjusting for biological covariates and (3) ComBat. In Figure 3, we show the empirical distributions of the site effects for both the location and scale parameters (dotted lines), together with the prior distributions estimated by ComBat (solid lines). We remind the reader that both the location and scale site effects are deviations from the grand mean. Consistent with the description of the site effects in the previous section, we note that the additive site effects (γ) are greater in magnitude for the MG site (Figure 3a), and the multiplicative site effects (δ) are greater than 1 on average for the TX and UM sites, and lower than 1 for the two remaining sites (Figure 3b). We note that the prior distributions fit the empirical distributions well for both the location and scale parameters; the ComBat procedure therefore appears appropriate for capturing these effects.

To visualize whether or not most of the variation in the data was still associated with imaging site after harmonization, we first performed an unsupervised dimension reduction of the harmonized cortical thickness measurement using PCA. The data projected into the first two PCs are presented in the first column of Figure 4. We note that for all three harmonization methods, the data points appear to be distributed equally across sites. We also performed a linear discriminant analysis (LDA), a popular supervised dimension reduction that maximizes the projection coordinates to predict the data classes. Here, we use the imaging sites as the data classes to be predicted. We present the projected data in the second column of Figure 4. One can see that for the raw data, the data points cluster almost perfectly by imaging site. This is not surprising; all features are highly associated with site effects when not harmonized. After harmonization, site clusters are substantially attenuated.

To formally test whether or not site effects remain after harmonization, we again used the different tests described in Section 3.2. Using ANOVA F-tests, all methods corrected for mean site differences in the median cortical thickness: $p = 0.997$ for Residuals, $p = 0.0498$ for Adjusted Residuals and $p = 0.0473$ for ComBat. We also tested for site-specific scaling effect in the measurements using Bartlett's sphericity test. We found that only ComBat was able to remove the scaling effects associated with site ($p = 0.42$). The site-specific variances remained largely uncorrected for both the Residuals ($p = 2.53 \times 10^{-8}$) and Adjusted Residuals ($p = 3.08 \times 10^{-8}$) methods. This is not surprising; only the ComBat harmonization method is able to model scaling factors associated with site. We also tested each ROI individually for remaining site effects. For all harmonization methods, none of the ROIs was significantly associated with site, using either the Bonferroni or the *maxT* adjustment.

Finally, to further investigate if site effects were entirely removed for each of the harmonization method, we attempted to predict imaging site from the harmonized cortical thickness features. More specifically, we used the support vector machine (SVM) [Cortes and Vapnik, 1995] classification algorithm, with radial basis kernel, to predict site from the imaging features. The SVM is largely used in the imaging community in the context of multivariate pattern analysis (MPVA) for understanding and discovering patterns associated with a disease outcome, for instance. A harmonization method that is successful in removing site effects will result in a lower SVM accuracy when attempting to predict site. Using $B = 10,000$ repetitions of a 10-fold cross-validation, we

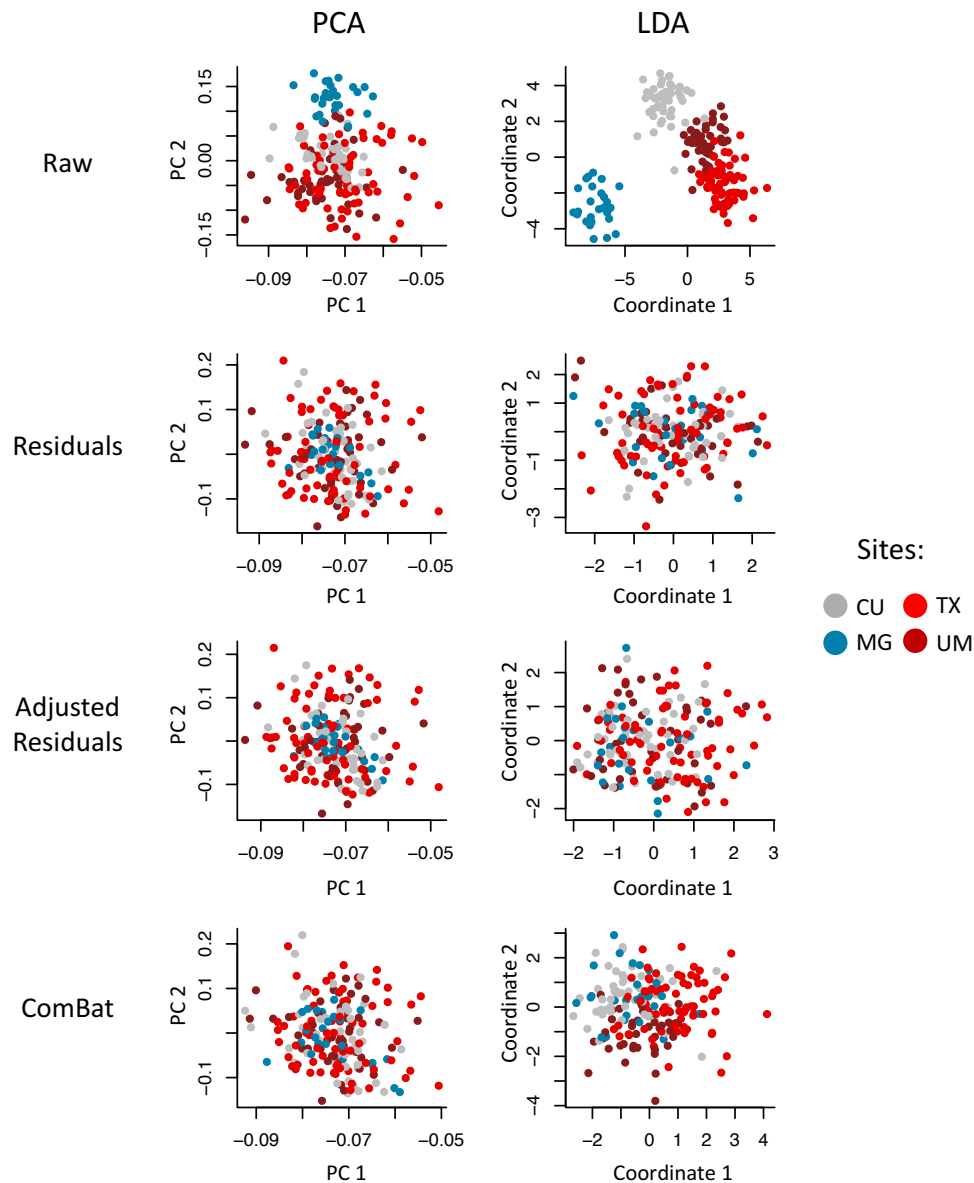


Figure 4. Supervised and unsupervised dimension reductions before and after harmonization for the EMBARC dataset. For each harmonization method, we first used principal component analysis (PCA) to reduce the dimension of the cortical thickness measurements in an unsupervised manner (agnostic of imaging sites). We present in the first column the projection of the data into the first two principal components (PCs) that explain most of the variation in the data. We also performed a supervised dimension reduction technique using linear discriminant analysis (LDA) using imaging site as a target variable. We present in the second column the projection of the data into the first two LDA coordinates. In both PCA and LDA, the first two coordinates are highly associated with site, while all harmonization methods removed most variation associated with site.

estimated an average accuracy for each method. For the raw values, the SVM prediction achieved an average of 76.6% classification accuracy. For the residuals and adjusted residuals methods, the average accuracies were 40.5% and 38.7% respectively. The ComBat method resulted in the lower average accuracy (36.3%). Using a permutation-based approach to generate a null distribution ($B = 10,000$), a SVM classification by chance attained on average 36.9% accuracy. This indicates the Adjusted Residuals and ComBat were best for the removal of site effects in the cortical thickness measurements. In comparison to the adjusted residuals, we note that the ComBat method additionally removes site-specific scaling effects. This could explain the better performance in the SVM, in which the covariance structure is implicitly used for predicting the class labels.

3.4 Associations with age

While it is important to show that a harmonization method successfully removes site effects, it is equally important to show that the method preserves the biological variability in the data; a method that removes both site effects and biological effects has no scientific use. To investigate whether or not the different harmonizations presented in this paper perform well at preserving biological variability, we use age as a variable of interest. Again, we use the EMBARC dataset to demonstrate the main results.

We first assessed the proportion of variation explained by age before and after harmonization. Without harmonization, the percentage of variation in the average cortical thickness explained by age was 23%. This was calculated using the usual coefficient of variation R^2 from linear regression with median cortical thickness as the outcome. For the unadjusted Residuals method, this percentage was increased to 26%, and for both the Adjusted Residuals and ComBat, the percentage was increased to 33%. The fact that the Unadjusted Residuals did not substantially increase the association with age is not surprising; we observed that age was confounded with imaging site, and therefore removing site effects without adjusting for age will also remove variation in the imaging features associated with age. On the other hand, both the Adjusted Residuals and ComBat strengthened the expected inverse relationship between age and cortical thickness by removing site effects, but also by preserving biological variability in the data.

We also evaluated the effects of harmonization on the prediction of age using the harmonized cortical thickness measurements. For prediction, we used two different algorithms: linear regression, and the popular support vector regression (SVR) algorithm, also commonly called ϵ -SVM regression, using a radial kernel. The ϵ -SVM regression paradigm is similar to the regular SVM, but for a continuous outcome. For each algorithm, we used the harmonized cortical thickness measurements as imaging features inputs \mathbf{X} to predict age. For each harmonization method, we randomly partitioned the subjects into k folds, and trained the prediction algorithm on $k - 1$ folds. We then predicted the age of the remaining subjects (testing dataset) and calculated the root-mean-square error (RMSE). We repeated the random sampling $B = 1000$ times, for $k \in \{3, 5, 10\}$, to obtain a distribution of the RMSE for each method at each k .

In Figure 5, we present the results from linear regression. For the three values of k , we observe that the data harmonized with the unadjusted Residuals do not perform well, while both the Adjusted Residuals and ComBat improve the prediction of age upon the raw data. In Figure 6, we present the results from ϵ -SVM regression. For the three values of k , we observe that the data harmonized with

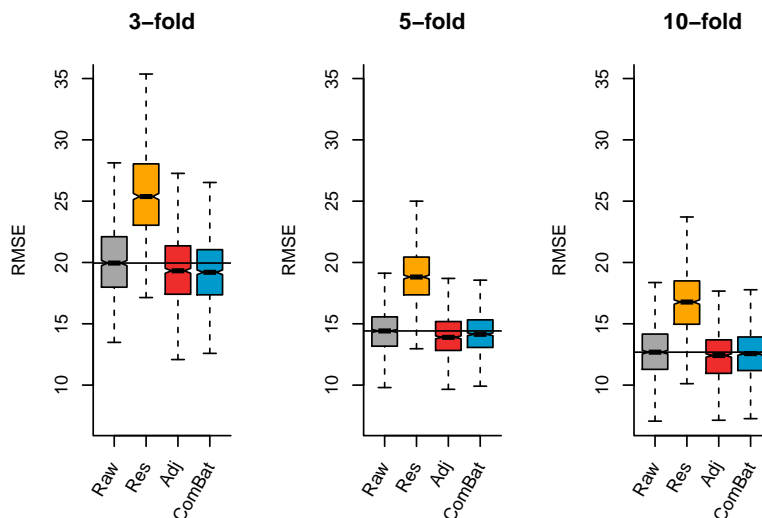


Figure 5. Root-mean-square error (RMSE) for age prediction using linear regression Using k -fold validation for $k \in \{3, 5, 10\}$ for $B = 1000$ random samplings, we calculated the RMSE on a testing dataset for the predicted age using linear regression. For the different harmonization methods, we used the harmonized cortical thickness measurements as input image features to train the algorithm.

the unadjusted Residuals do not perform well, while the Adjusted Residuals and ComBat perform very similarly to the raw data. Interestingly, we note that while the Adjusted Residuals and ComBat methods improve the prediction in the case of linear regression, very little improvement was obtained in ϵ -SVM regression. One explanation could be that the different harmonization methods presented in this paper are linear models, and therefore are optimal for prediction using linear prediction, but not necessarily for the ϵ -SVM regression.

3.5 Life-span study by harmonizing the EMBARC and VDLC datasets

While the two studies present in this paper have a different age range ([18,65] y.o. for the EMBARC study; [58,95] y.o. for the Vascular study), there is some overlap between the two age ranges (see Figure 7, first panel). For the study of life-span trajectories, it is sometimes necessary to combine data from multiple studies, with each individual study often targeting participants from a specific age range. We show here that even though different scanners were used across the studies, it is possible to combine and harmonize the data, to remove the scanner effects, and thereby improve the correlation between the imaging outcome and biological factors of interest, namely age.

We present the relationship between median cortical thickness and age, before and after harmonization in Figure 7 with data points colored by study (red for EMBARC and green for Vascular). One can observe an overlap in the age span between the two studies, and that inter-subject variation seems to be higher in the EMBARC subjects in the raw data. This can be explained by the large variation between the four scanners in the EMBARC, as discussed previously in the Results

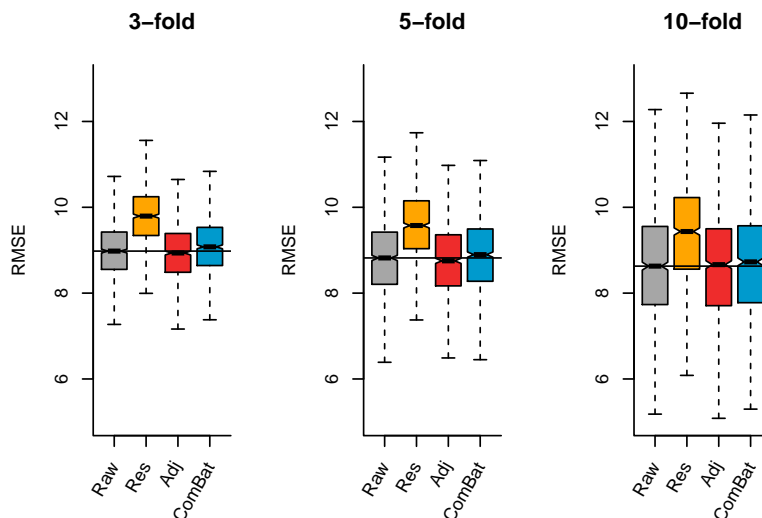


Figure 6. Root-mean-square error (RMSE) for age prediction using ϵ -SVM. Using k -fold validation for $k \in \{3, 5, 10\}$ for $B = 1000$ random samplings, we calculated the RMSE on a testing dataset for the predicted age using ϵ -SVM. For the different harmonization methods, we used the harmonized cortical thickness measurements as input image features to train the algorithm.

section. For each method, we calculated the correlation between the median cortical thickness and age. For the unharmonized data, we obtained a correlation of -0.70 . For the unadjusted Residuals, we obtained a correlation of -0.26 . Such a weaker correlation is not surprising; both studies have a vastly different age range, and therefore blindly harmonizing the data for site without adjusting by age will diminish the age effect across the life span. For the Adjusted Residuals, we obtained a correlation of -0.77 , and we obtained a correlation of -0.79 for ComBat. Both adjusted residualization and ComBat were effective at decreasing the inter-subject variability by removing scanner effects, while preserving the trend associated with age across the life-span.

4 Discussion

With the increasing complexity of study design in multi-site neuroimaging studies, the neuroscience community needs robust, validated, and computationally feasible methods for addressing the critical impact of non-biological sources of data variation. We use the term “harmonization” to refer to the process of combining data from multiple sites and removing the unwanted variability associated with scanner.

In this paper, we proposed to use the ComBat algorithm, previously developed to deal with batch effects in the study of gene expression data, as a reliable harmonization method for combining cortical thickness measurements across sites. This was motivated by its previously documented excellent performance for harmonizing voxel-wise fractional anisotropy (FA) and mean diffusivity (MD) measurements [Fortin et al., 2017], two common DTI scalar maps. Using two large multi-site

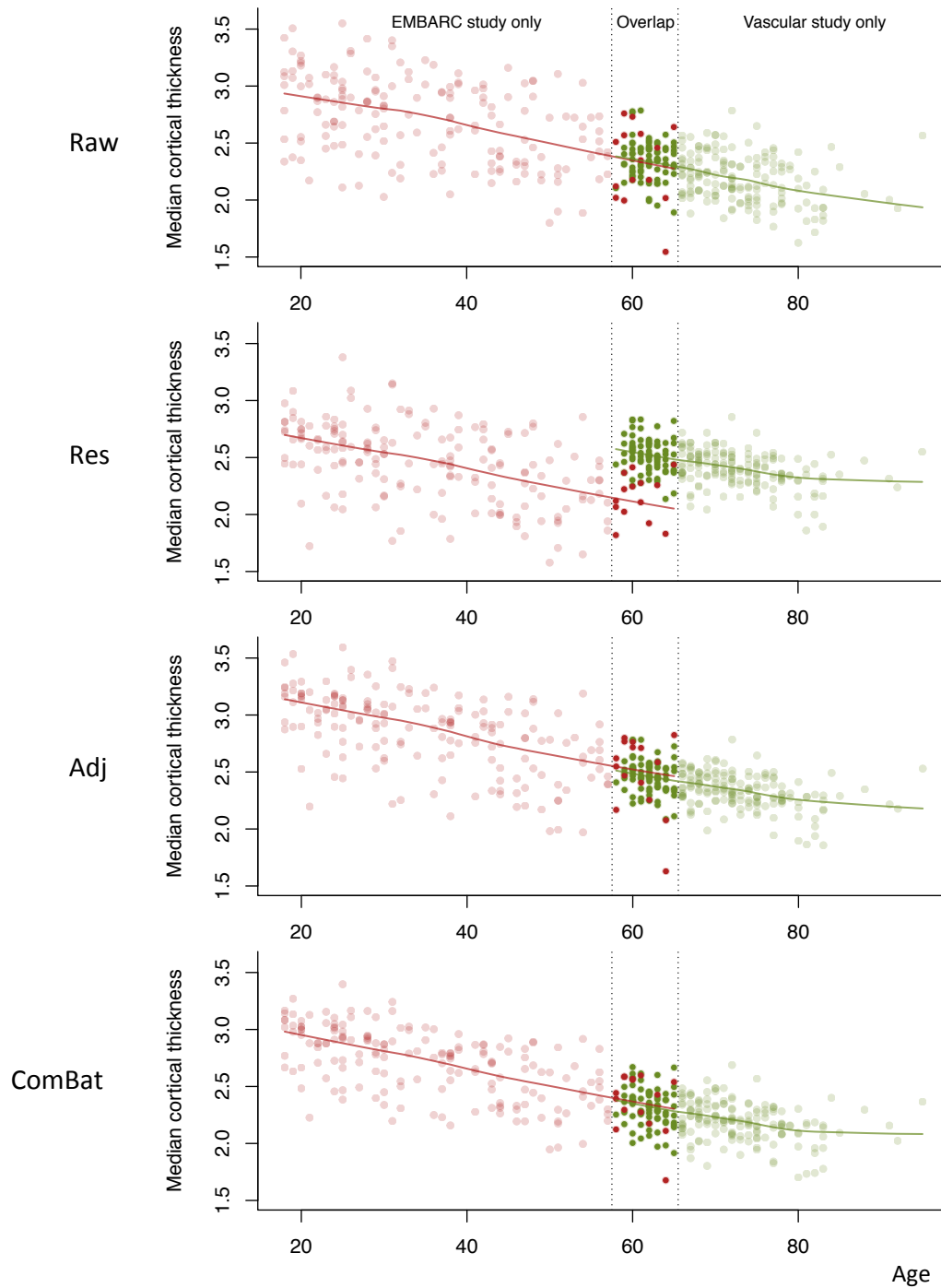


Figure 7. Median age trajectory before and after harmonization. The EMBARC and Vascular studies were combined using different harmonizations. The red dots represent the median cortical thickness for the EMBARC study participants, and the green dots represent the median cortical thickness for the Vascular study participants. The curves represent the lowest fitted values for each study separately.

studies, EMBARC and VDLC, we presented a general approach for identifying unwanted sources of variance in neuroimaging data using exploratory, univariate, and multivariate tests for scanner effects. We then showed that ComBat is effective at removing nuisance variability associated with scanners, while preserving the age effects in the cortical thickness across participants. We also showed that ComBat can be used to combine those two large studies, with a vastly different age range, to study cortical thickness across the life span.

We compared the ComBat harmonization algorithm to two commonly used scanner effect correction methods: residualization and adjusted residualization. The latter method adjusts for covariates of interest (for instance age) in the removal of site effects. ComBat is similar to the adjusted method, except that it additionally models scanner-specific scaling effects. ComBat also uses a Bayesian framework to improve the stability of the estimated parameters in small sample sizes. ComBat is easy to apply and has minimal computational overhead. Equally importantly, we have developed open-source, easy-to-use code for applying this algorithm in R, Matlab, and Python. This ensures that the ComBat algorithm can be seamlessly integrated into any existing processing pipelines.

We note that several other harmonization techniques have been previously proposed in the context of other imaging modalities. For conventional MRI studies, intensity normalization techniques have been developed to make the image intensities comparable across studies, including histogram matching [Nyúl et al., 2000], WhiteStripe [Shinohara et al., 2014] and RAVEL [Fortin et al., 2016]. Another method, called source-based morphometry, uses independent component analysis (ICA) to remove variability associated with certain scanner parameters in structural MRI [Chen et al., 2014]. For diffusion tensor imaging (DTI) studies, it has been proposed to use spherical harmonics to harmonize data across studies, using a reference site to create pairwise site transformations [Mirzaalian et al., 2016]. It has also been proposed to use functional normalization, originally developed in [Fortin et al., 2014], for harmonizing DTI scalar maps. We note that the aforementioned harmonization techniques could not be readily applied to cortical thickness.

In the future, we plan to develop a time-dependent ComBat algorithm for understanding scenarios where subjects were scanned over multiple time points, and for which scans were acquired on different scanners, or on the same scanners but with different scanning parameters. We are also planning on improving the performance of ComBat in the presence of confounding by implementing an inverse probability weighting (IPW) scheme into the algorithm. IPW has been shown to improve prediction when the outcome of interest is confounded with another covariate [Linn et al., 2016]. This has the potential to improve the performance of ComBat for age prediction using the SVM regression framework, as well as for other prediction methods.

5 Software

All postprocessing analysis was performed in the R statistical software (version 3.2.0). For ComBat, the reference implementations from the `sva` package was used. All figures were generated in R with customized and reproducible scripts. We have adapted and implemented the ComBat methodology to imaging data, and the software is available in R and Matlab (<https://github.com/Jfortin1/ComBatHarmonization>) and in Python (<https://github.com/ncullen93/neuroCombat>).

Abbreviations

ANTs: Advanced normalization tools; AD: Alzheimer's disease; ADNI: Alzheimer's Disease Neuroimaging Initiative; ANOVA: Analysis of variance; DTI: Diffusion tensor imaging; EB: Empirical Bayes; EMBARC: Establishing Moderators and Biosignatures of Antidepressant Response in Clinical care; FA: Fractional anisotropy; FWER: Family-wise error rate; GPR: Gaussian process regression; HAMD: Hamilton Depression Rating Scale; IPW: Inverse probability weighting; LDA: Linear discriminant analysis; LLD: Late-life depression; MASQ: Mood and Anxiety Symptom Questionnaire; MCI: Mild cognitive impairment; MD: Mean diffusivity; MVPA: Multivariate pattern analysis; OASIS: Open Access Series of Imaging Studies; PC: Principal component; PCA: Principal component analysis; QIDS: Quick Inventory for Depression Symptomatology; RMSE: Root-mean-square error; ROI: Region of interest; STAI: Spielberger State-Trait Anxiety Inventory; SVM: Support vector machine; SVR: Support vector regression; VDLC: Vascular disease: Longitudinal changes;

Competing interests

The authors declare that they have no competing interests.

Authors contributions

JPF developed the methodology. WDT, PA, CC, MF, PJM, MM, RVP, MLP, MHT and MMW recruited the participants and acquired the data. IA processed the data. JPF and NC developed software and analyzed the data. JPF, NC, RTS and YIS wrote the manuscript. RTS and YIS supervised the work. All authors read and approved the final manuscript.

Acknowledgements

The research was supported in part by R01NS085211 and R21NS093349 from the National Institute of Neurological Disorders and Stroke, R01MH112847 from the National Institute of Mental Health. The EMBARC study was supported by U01MH092221 and U01MH092250. The VDLC study was supported by R01MH060697, R01MH074916, R01MH078216 and NCT00045773. The content is solely the responsibility of the authors and does not necessarily represent the official views of the funding agencies.

References

Maurice S Bartlett. Properties of sufficiency and statistical tests. *Proceedings of the Royal Society of London. Series A, Mathematical and Physical Sciences*, pages 268–282, 1937.

- Jiayu Chen, Jingyu Liu, Vince D Calhoun, Alejandro Arias-Vasquez, Marcel P Zwiers, Cota Navin Gupta, Barbara Franke, and Jessica A Turner. Exploration of scanning effects in multi-site structural mri studies. *Journal of neuroscience methods*, 230:37–50, 2014.
- Corinna Cortes and Vladimir Vapnik. Support-vector networks. *Machine learning*, 20(3):273–297, 1995.
- Adriana Di Martino, Chao-Gan Yan, Qingyang Li, Erin Denio, Francisco X Castellanos, Kaat Alaerts, Jeffrey S Anderson, Michal Assaf, Susan Y Bookheimer, Mirella Dapretto, et al. The autism brain imaging data exchange: towards a large-scale evaluation of the intrinsic brain architecture in autism. *Molecular psychiatry*, 19(6):659–667, 2014.
- Sandrine Dudoit, Juliet Popper Shaffer, and Jennifer C Boldrick. Multiple hypothesis testing in microarray experiments. *Statistical Science*, pages 71–103, 2003.
- Jean-Philippe Fortin, Aurelie Labbe, Mathieu Lemire, Brent Zanke, Thomas Hudson, Elana Fertig, Celia Greenwood, and Kasper D Hansen. Functional normalization of 450k methylation array data improves replication in large cancer studies. *Genome Biology*, 15(11):503, 2014. doi:10.1186/s13059-014-0503-2.
- Jean-Philippe Fortin, Elizabeth M Sweeney, John Muschelli, Ciprian M Crainiceanu, Russell T Shinohara, Alzheimer’s Disease Neuroimaging Initiative, et al. Removing inter-subject technical variability in magnetic resonance imaging studies. *NeuroImage*, 132:198–212, 2016.
- Jean-Philippe Fortin, Drew Parker, Birkan Tunc, Takanori Watanabe, Mark A Elliott, Kosha Ruparel, David R Roalf, Theodore D Satterthwaite, Ruben C Gur, Raquel E Gur, Robert T Schultz, Ragini Verma, and Russell T Shinohara. Harmonization of multi-site diffusion tensor imaging data. *bioRxiv*, 2017. doi:10.1101/116541. URL <http://biorxiv.org/content/early/2017/03/15/116541>.
- Tsafir Greenberg, Henry W Chase, Jorge R Almeida, Richelle Stiffler, Carlos R Zevallos, Haris A Aslam, Thilo Deckersbach, Sarah Weyandt, Crystal Cooper, Marisa Toups, et al. Moderation of the relationship between reward expectancy and prediction error-related ventral striatal reactivity by anhedonia in unmedicated major depressive disorder: findings from the embarc study. *American Journal of Psychiatry*, 172(9):881–891, 2015.
- Max Hamilton. A rating scale for depression. *Journal of Neurology, Neurosurgery & Psychiatry*, 23(1):56–62, 1960.
- Xiao Han, Jorge Jovicich, David Salat, Andre van der Kouwe, Brian Quinn, Silvester Czanner, Evelina Busa, Jenni Pacheco, Marilyn Albert, Ronald Killiany, et al. Reliability of mri-derived measurements of human cerebral cortical thickness: the effects of field strength, scanner upgrade and manufacturer. *Neuroimage*, 32(1):180–194, 2006.
- W Evan Johnson, Cheng Li, and Ariel Rabinovic. Adjusting batch effects in microarray expression data using empirical bayes methods. *Biostatistics*, 8(1):118–127, 2007.
- Jorge Jovicich, Silvester Czanner, Douglas Greve, Elizabeth Haley, Andre van der Kouwe, Randy Gollub, David Kennedy, Franz Schmitt, Gregory Brown, James MacFall, et al. Reliability in multi-site structural mri studies: effects of gradient non-linearity correction on phantom and human data. *Neuroimage*, 30(2):436–443, 2006.

- David B Keator, K Helmer, Jason Steffener, Jessica A Turner, Theo GM Van Erp, Syam Gadde, Naveen Ashish, GA Burns, and B Nolan Nichols. Towards structured sharing of raw and derived neuroimaging data across existing resources. *Neuroimage*, 82:647–661, 2013.
- Jeffrey T Leek, Robert B Scharpf, Héctor Corrada Bravo, David Simcha, Benjamin Langmead, W Evan Johnson, Donald Geman, Keith Baggerly, and Rafael A Irizarry. Tackling the widespread and critical impact of batch effects in high-throughput data. *Nature Reviews Genetics*, 11(10):733–739, 2010. doi:[10.1038/nrg2825](https://doi.org/10.1038/nrg2825).
- Kristin A Linn, Bilwaj Gaonkar, Jimit Doshi, Christos Davatzikos, and Russell T Shinohara. Addressing confounding in predictive models with an application to neuroimaging. *The international journal of biostatistics*, 12(1):31–44, 2016.
- Daniel S Marcus, Tracy H Wang, Jamie Parker, John G Csernansky, John C Morris, and Randy L Buckner. Open access series of imaging studies (oasis): cross-sectional mri data in young, middle aged, nondemented, and demented older adults. *Journal of cognitive neuroscience*, 19(9):1498–1507, 2007.
- Maarten Mennes, Bharat B Biswal, F Xavier Castellanos, and Michael P Milham. Making data sharing work: the fcp/indi experience. *Neuroimage*, 82:683–691, 2013.
- H Mirzaalian, L Ning, P Savadjiev, O Pasternak, S Bouix, O Michailovich, G Grant, CE Marx, RA Morey, LA Flashman, et al. Inter-site and inter-scanner diffusion mri data harmonization. *NeuroImage*, 135:311–323, 2016.
- L G Nyúl, J K Udupa, and X Zhang. New variants of a method of mri scale standardization. *IEEE Trans Med Imaging*, 19(2):143–50, Feb 2000. doi:[10.1109/42.836373](https://doi.org/10.1109/42.836373).
- Anil Rao, Joao M Monteiro, Janaina Mourao-Miranda, Alzheimer’s Disease Initiative, et al. Predictive modelling using neuroimaging data in the presence of confounds. *NeuroImage*, 2017.
- A John Rush, Madhukar H Trivedi, Hicham M Ibrahim, Thomas J Carmody, Bruce Arnow, Daniel N Klein, John C Markowitz, Philip T Ninan, Susan Kornstein, Rachel Manber, et al. The 16-item quick inventory of depressive symptomatology (qids), clinician rating (qids-c), and self-report (qids-sr): a psychometric evaluation in patients with chronic major depression. *Biological psychiatry*, 54(5):573–583, 2003.
- Russell T Shinohara, Elizabeth M Sweeney, Jeff Goldsmith, Navid Shiee, Farrah J Mateen, Peter A Calabresi, Samson Jarso, Dzung L Pham, Daniel S Reich, Ciprian M Crainiceanu, Australian Imaging Biomarkers Lifestyle Flagship Study of Ageing, and Alzheimer’s Disease Neuroimaging Initiative. Statistical normalization techniques for magnetic resonance imaging. *Neuroimage Clin*, 6:9–19, 2014. doi:[10.1016/j.nicl.2014.08.008](https://doi.org/10.1016/j.nicl.2014.08.008).
- RP Snaith, M Hamilton, S Morley, A Humayan, D Hargreaves, and P Trigwell. A scale for the assessment of hedonic tone the snaith-hamilton pleasure scale. *The British Journal of Psychiatry*, 167(1):99–103, 1995.
- Charles D Spielberger. Manual for the state-trait anxiety inventory stai (form y)(“ self-evaluation questionnaire”). 1983.

- Hidemasa Takao, Naoto Hayashi, and Kuni Ohtomo. Effect of scanner in longitudinal studies of brain volume changes. *Journal of Magnetic Resonance Imaging*, 34(2):438–444, 2011.
- Hidemasa Takao, Naoto Hayashi, and Kuni Ohtomo. Effects of study design in multi-scanner voxel-based morphometry studies. *Neuroimage*, 84:133–140, 2014.
- Madhukar H Trivedi, Patrick J McGrath, Maurizio Fava, Ramin V Parsey, Benji T Kurian, Mary L Phillips, Maria A Oquendo, Gerard Bruder, Diego Pizzagalli, Marisa Toups, et al. Establishing moderators and biosignatures of antidepressant response in clinical care (embarc): Rationale and design. *Journal of psychiatric research*, 78:11–23, 2016.
- John W Tukey. Comparing individual means in the analysis of variance. *Biometrics*, pages 99–114, 1949.
- Nicholas J Tustison, Philip A Cook, Arno Klein, Gang Song, Sandhitsu R Das, Jeffrey T Duda, Benjamin M Kandel, Niels van Strien, James R Stone, James C Gee, et al. Large-scale evaluation of ants and freesurfer cortical thickness measurements. *Neuroimage*, 99:166–179, 2014.
- John Darrell Van Horn and Arthur W Toga. Multi-site neuroimaging trials. *Current opinion in neurology*, 22(4):370, 2009.
- David Watson and Lee Anna Clark. The mood and anxiety symptom questionnaire. *Unpublished manuscript, University of Iowa, Department of Psychology, Iowa City*, 1991.
- Christian A Webb, Daniel G Dillon, Pia Pechtel, Franziska K Goer, Laura Murray, Quentin JM Huys, Maurizio Fava, Patrick J McGrath, Myrna Weissman, Ramin Parsey, et al. Neural correlates of three promising endophenotypes of depression: evidence from the embarc study. *Neuropsychopharmacology*, 41(2):454–463, 2016.
- Peter H Westfall and S Stanley Young. *Resampling-based multiple testing: Examples and methods for p-value adjustment*, volume 279. John Wiley & Sons, 1993.

Appendix A

A.1 Quantification of site effects in the VDLC study

We present in Figure A.1b the distribution of the median cortical thickness stratified by scanner. Using ANOVA, the median cortical thickness was significantly different across the seven scanners ($p = 2.2 \times 10^{-16}$). Not surprisingly, the median cortical thicknesses from each of the 3T scanners were significantly different from those of each of the 1.5T scanner, adjusting for multiple comparisons using Tukey's method.

We also compared the variances of the median cortical thickness measurement across scanners. To do so, we performed the Bartlett's sphericity test, which estimates whether or not the variances are homogeneous across scanners. To avoid confounding of scanner with age and gender, we first regressed out the variation explained by age and gender; the test was significant ($p = 0.0013$).

We then tested each ROI individually for site effects by calculating an ANOVA F-test. We obtained 86 ROIs significantly associated with site, using Bonferroni correction to adjust for multiple comparisons (adjusted $p < 0.05$), and 87 ROIs using the permutation-based one step maxT procedure (adjusted $p < 0.05$, $B = 10,000$ permutations). We present in Figure B.1b the observed R^2 from ANOVA and the distribution of the maximum R^2 obtained from each permutation. To test for scanner-specific scaling effects, we also tested each feature individually for homogeneity of variances across sites using Bartlett's test. We obtained 4 ROIs with variances significantly associated with site (adjusted $p < 0.05$, $B = 10,000$ permutations).

A.2 Removal of scanner effects in the VDLC study with harmonization

In Figure A.2, we show the empirical distributions of the site effects for both the location and scale parameters (dotted lines), together with the prior distributions estimated by ComBat (solid lines). We remind the reader that both the location and scale scanner effects are deviations from the grand mean. Consistent with the description of the site effects in the previous section, we note that the additive scanner effects (γ) are greater in magnitude for the 3T scanners. The multiplicative scanner effects (δ) are shown in Figure A.2b. We note that the prior distributions fit the empirical distributions well for both the location and scale parameters; the ComBat procedure therefore appears appropriate for capturing these effects.

To visualize whether or not most of the variation in the data was still associated with scanner after harmonization, we first performed an unsupervised dimension reduction of the harmonized cortical thickness measurement using PCA. The data projected into the first two PCs are presented in the first column of Figure A.3. We note that for all three harmonization methods, the data points appear to be distributed equally across scanners. We also performed LDA using scanners as the data classes. We present the projected data in the second column of Figure A.3. One can see that for the raw data, there is a clear separation between the different types of scanners. Interestingly, the data from the D SIGNA scanner appear to cluster separately; We note that this is the only GE scanner in the VDLC study. After harmonization, clusters associated with scanner are substantially attenuated.

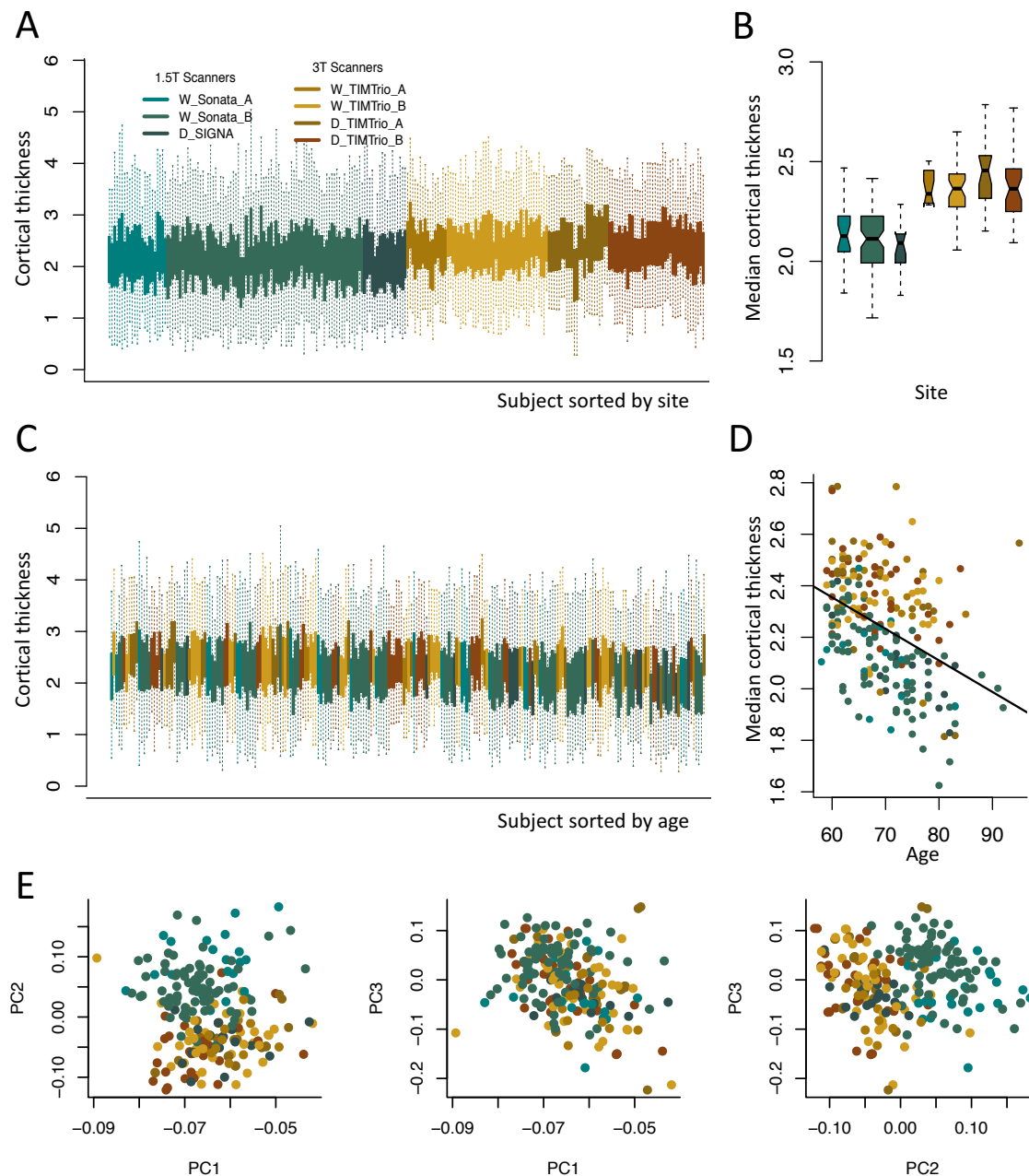


Figure A.1. Visualization of sites effects in the Vascular study. Plots are colored by scanner. The green shades represent the 1.5T scanners, while the brown shades represent the 3T scanners. (a) Boxplots of the cortical thickness sorted by site. Each boxplot represents the distribution of the 98 cortical regions for one subject. (b) Boxplots of the median cortical thickness, grouped by scanner. The measurements derived from 1.5T scanners are substantially lower than measurements from 3T scanners. (c) Same as (a), but sorted by age. (d) Relationship between median cortical thickness and age, colored by scanner. (e) Plots of the first 3 principal components (PCs) from principal component analysis (PCA), colored by scanner. The second PC is highly associated with scanner.

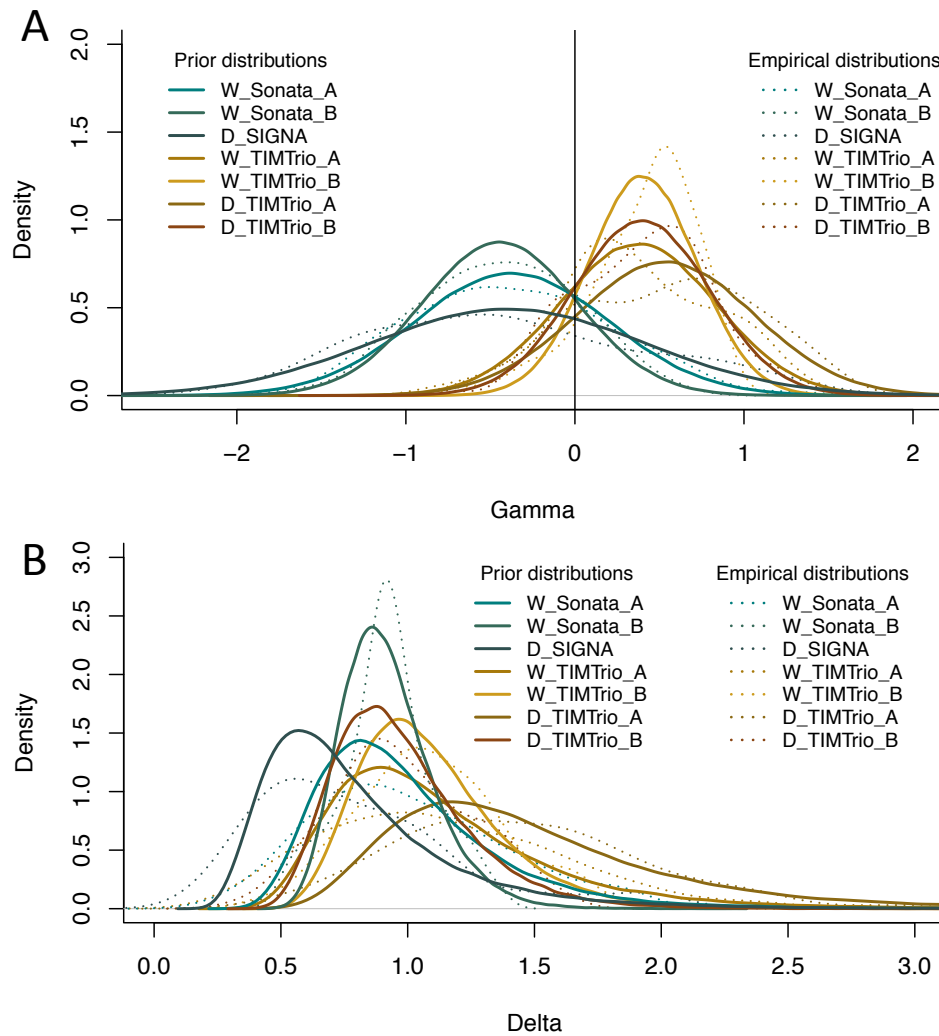


Figure A.2. Prior distributions of the site effect parameters estimated by ComBat in the Vascular study. Location and scale site-specific parameters estimated by ComBat, for the EMBARC study. **(a)** The ComBat-estimated prior distributions for the site-specific location parameters γ are shown in solid lines, and the empirical distributions of the site-specific location parameters are shown in dashed lines. **(b)** The ComBat-estimated prior distributions for the site-specific scale parameters δ are shown in solid lines, and the empirical distributions of the site-specific scale parameters are shown in dashed lines. The prior distributions fit well the empirical distributions for both the location and scale parameters.

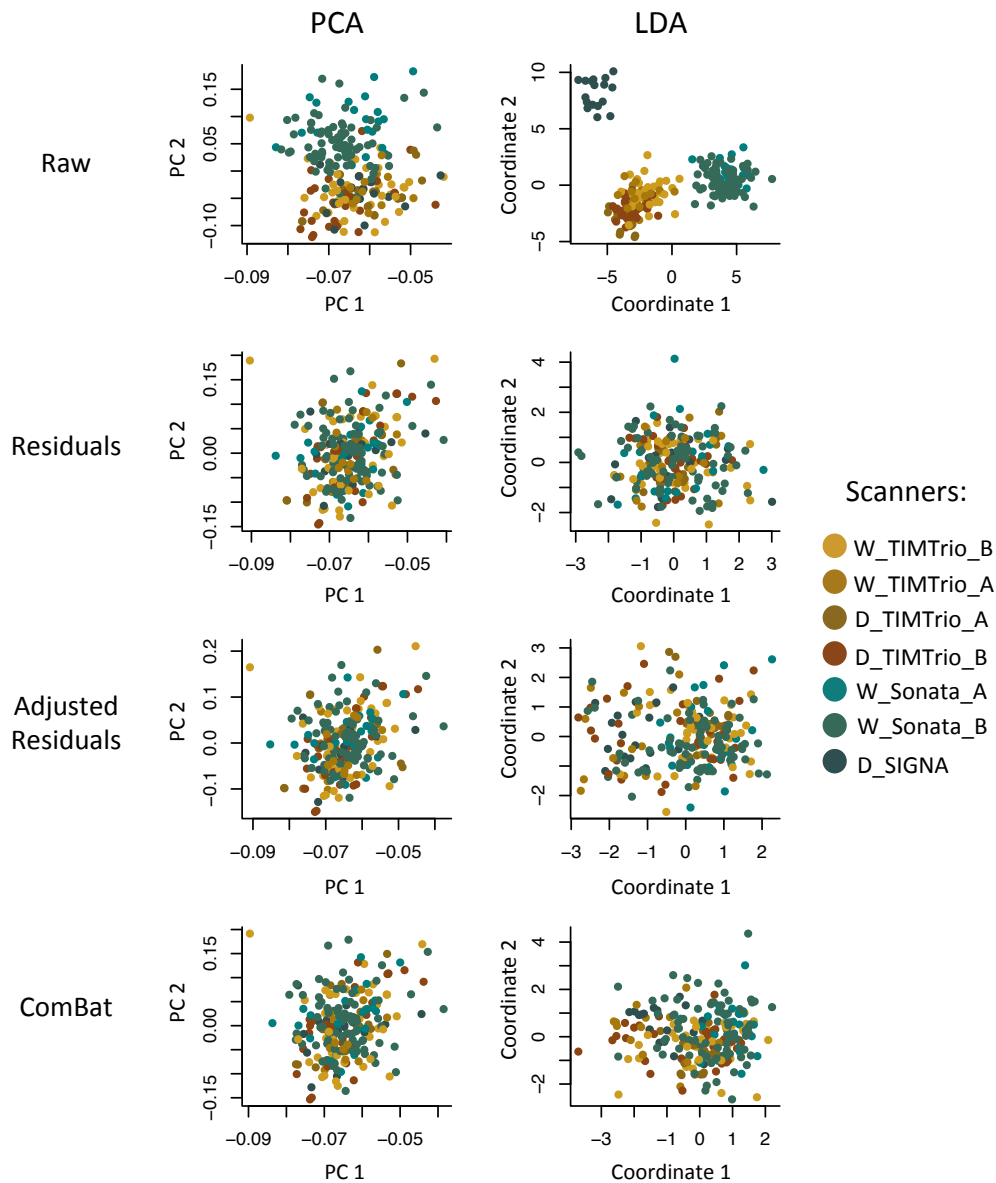


Figure A.3. Supervised and unsupervised dimension reductions before and after harmonization for the Vascular dataset. For each harmonization method, we first used principal component analysis (PCA) to reduce the dimension of the cortical thickness measurements in an unsupervised manner (agnostic of imaging sites). We present in the first column the projection of the data into the first two principal components (PCs) that explain most of the variation in the data. We also performed a supervised dimension reduction technique using linear discriminant analysis (LDA) using imaging site as a target variable. We present in the second column the projection of the data into the first two LDA coordinates. In both PCA and LDA, the first two coordinates are highly associated with site, while all harmonization methods removed most variation associated with site.

Using ANOVA F-tests, all methods corrected for mean scanner differences in the median cortical thickness: $p = 0.99$ for Residuals, $p = 0.94$ for Adjusted Residuals and $p = 0.94$ for ComBat. We also tested for scanner-specific scaling effects in the measurements using Bartlett's sphericity test. We found that only ComBat was able to remove the scaling effects associated with scanner ($p = 0.46$). Scanner-specific variances remained present in both the Residuals ($p = 0.03$) and Adjusted Residuals ($p = 0.01$) methods. Finally, we tested each ROI individually for remaining scanner effects. For all harmonization methods, none of the ROIs was significantly associated with scanner, using either the Bonferroni or the *maxT* adjustment.

As for the EMBARC study, we used the SVM with radial basis kernel, to assess prediction of scanner from the imaging features. Again, a harmonization method that is successful in removing scanner effects will result in a lower SVM accuracy when attempting to predict scanner. Using $B = 10,000$ repetitions of a 10-fold cross-validation, we estimated an average accuracy for each method. For the raw values, the SVM prediction achieved an average of 67.7% classification accuracy. For the residuals and adjusted residuals methods, the average accuracies were 43.4% and 44.4% respectively. The ComBat method resulted in the lower average accuracy (41.0%).

Appendix B

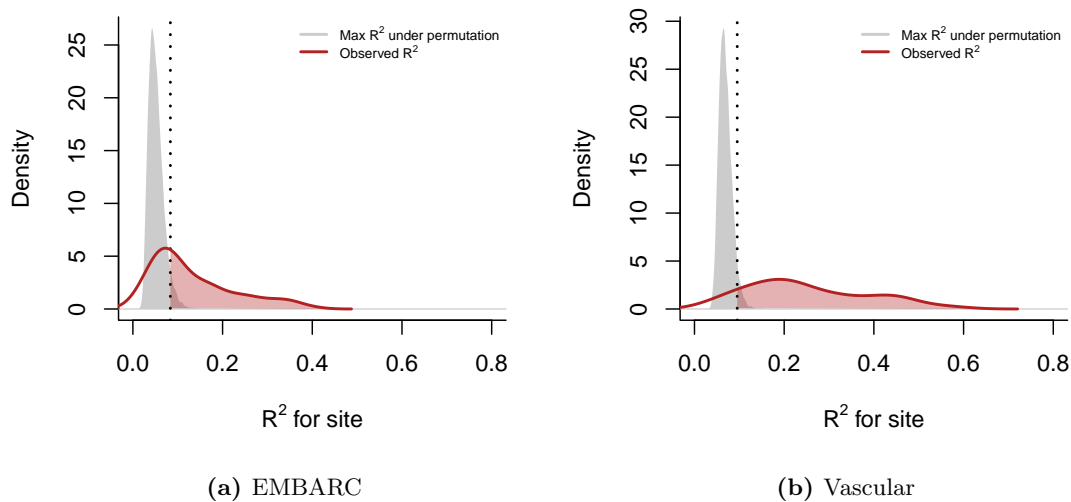


Figure B.1. Variance explained by imaging site (R^2). For each feature, we calculated the coefficient of determination R^2 between cortical thickness and imaging site. We present the densities of R^2 (red lines) for the (a) EMBARC study and the (b) Vascular study. To obtain a measure of significance and to correct for multiple comparisons, we performed a one-step max R^2 procedure. Briefly, we permuted the site labels $B = 10,000$ times, recalculated the R^2 values and retained the maximum R^2 value at each permutation. The grey densities represent the distribution of the maximum R^2 's. The vertical dashed line indicates the 95% quantile of the maximum R^2 distribution. The features above that threshold are significant at the $\alpha = 0.05$ level (shaded red area). Most features remained significant after adjustment.