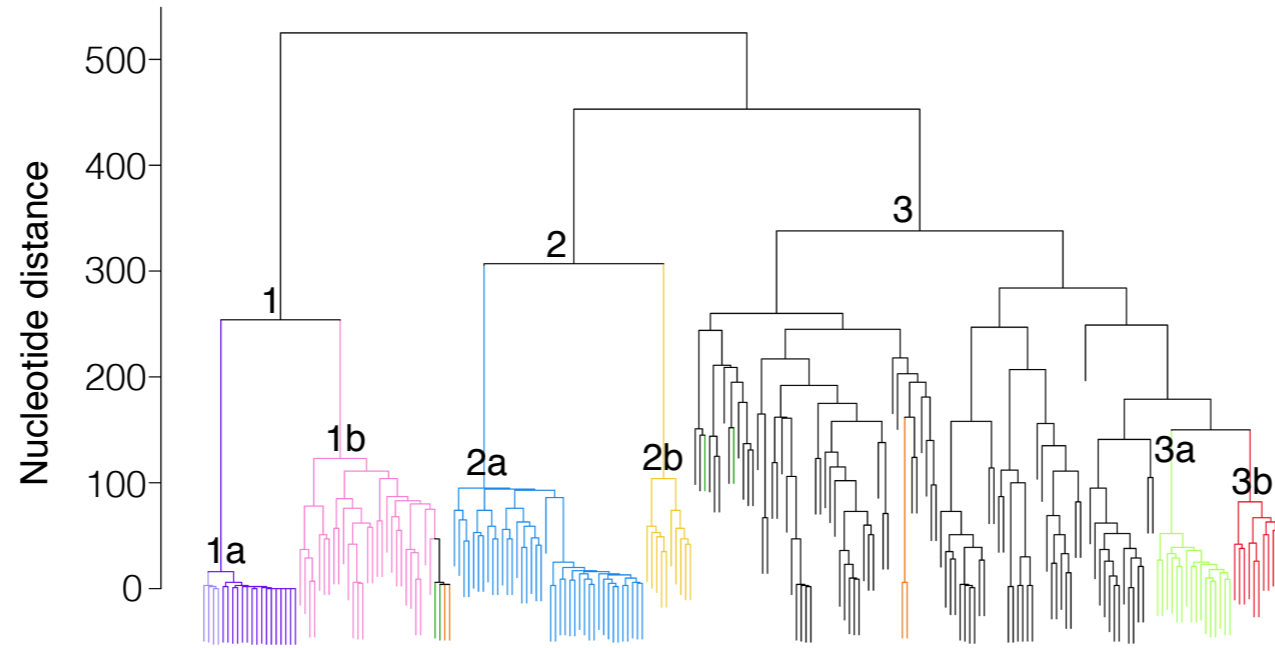
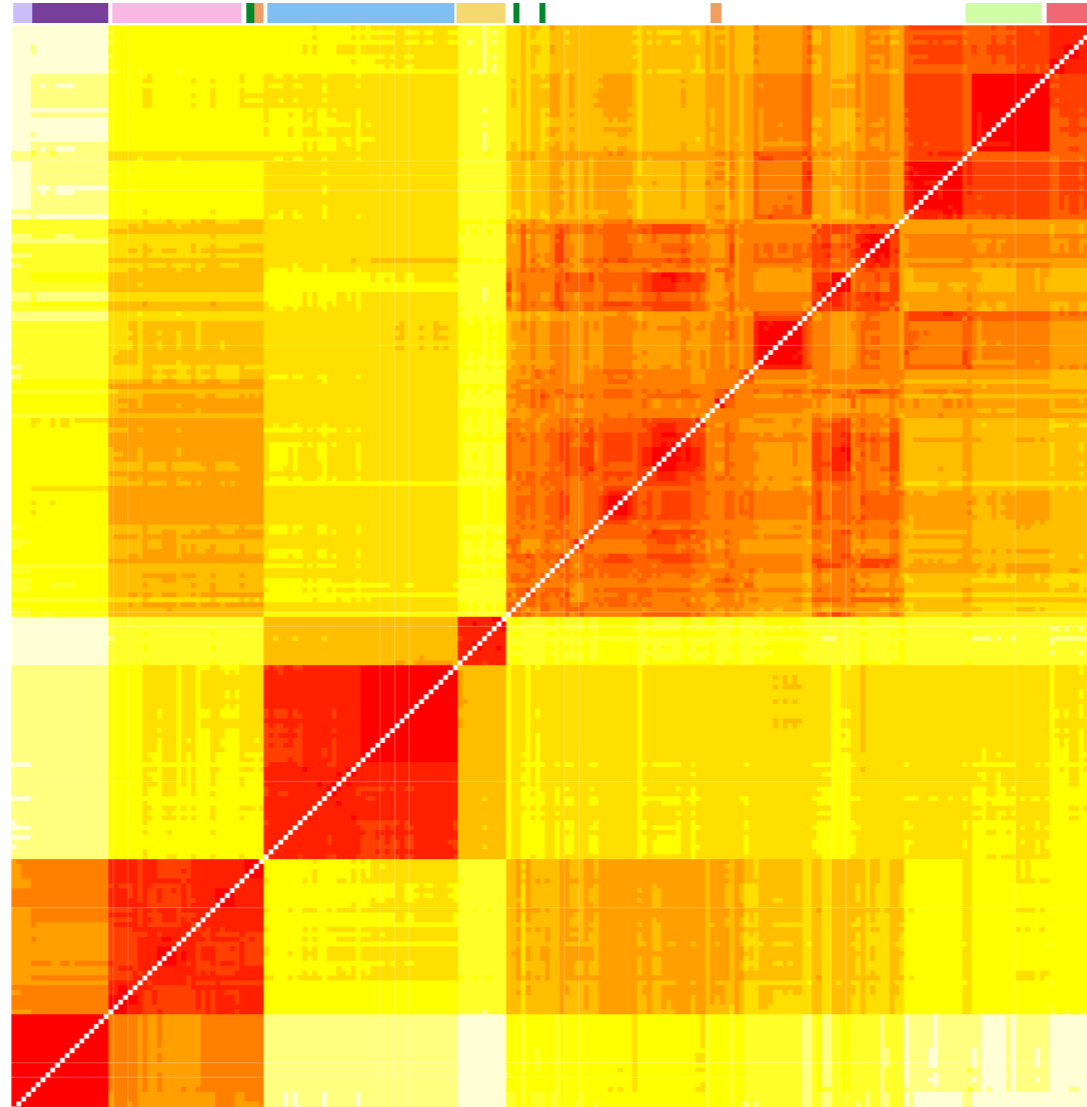


JH739890:10.4-10.5 Mb



- *Geospiza difficilis* from Wolf (1a)
- *G. difficilis* from Darwin (1a)
- *G. difficilis* from Pinta, Santiago & Fernandina (1b)
- *G. scandens* (1b, 3)
- *Platyspiza crassirostris* (3a)
- *G. fortis* (1b, 3)
- *Certhidea olivacea* (2b)
- *C. fusca* from Española and San Cristobal (2a)
- *Pinaroloxias inornata* (Cocos finch) (3a)
- *Camarhynchus* sp. & remaining *Geospiza* sp. (3)



Gene in region:
NPY4R
Neuropeptide Y receptor Y4